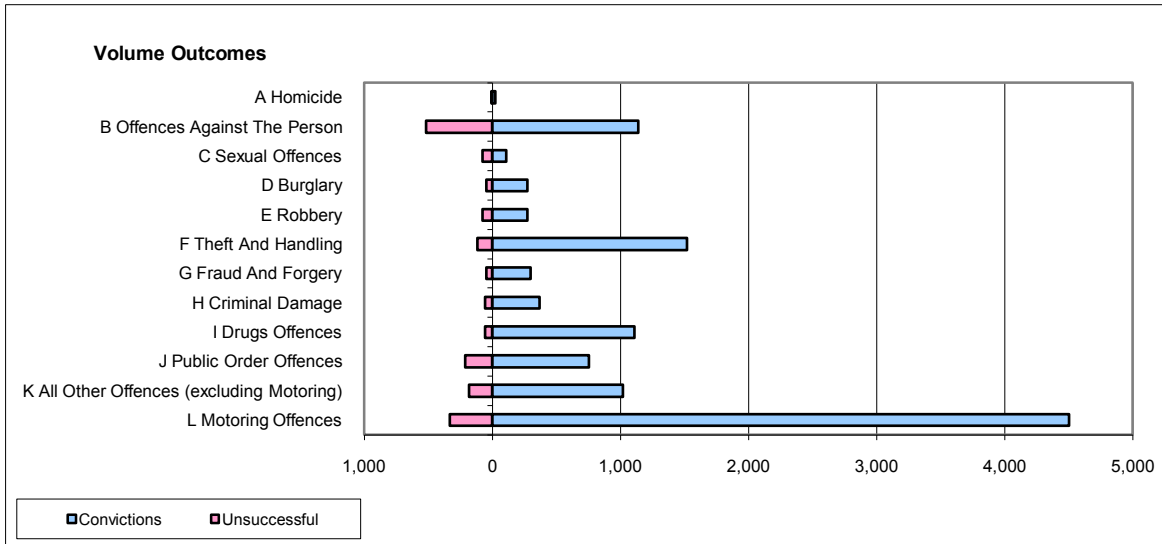
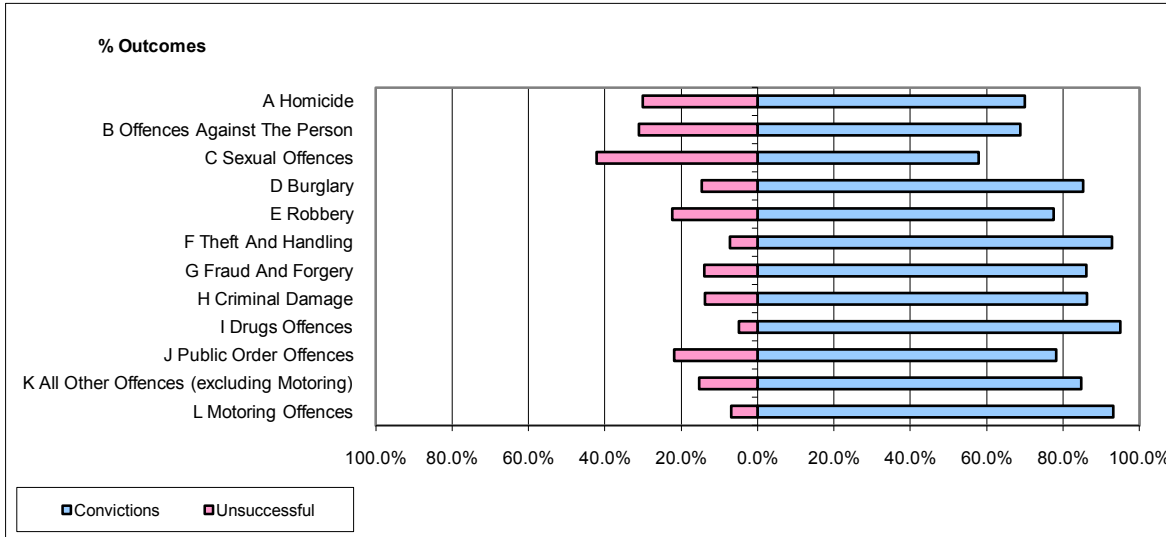


CPS OUTCOMES BY PRINCIPAL OFFENCE CATEGORY

June 2009

P25-Metropolitan&City



	Convictions		Unsuccessful	
	Number of Defendants	%	Number of Defendants	%
A Homicide	21	70.0%	9	30.0%
B Offences Against The Person	1,141	68.9%	516	31.1%
C Sexual Offences	106	57.9%	77	42.1%
D Burglary	274	85.4%	47	14.6%
E Robbery	274	77.6%	79	22.4%
F Theft And Handling	1,519	92.8%	118	7.2%
G Fraud And Forgery	297	86.1%	48	13.9%
H Criminal Damage	370	86.2%	59	13.8%
I Drugs Offences	1,108	95.1%	57	4.9%
J Public Order Offences	754	78.2%	210	21.8%
K All Other Offences (excluding Motoring)	1,021	84.7%	184	15.3%
L Motoring Offences	4,500	93.1%	332	6.9%
Admin Finalisations	0	0.0%	281	100.0%
TOTAL	11,385	85.0%	2,017	15.0%