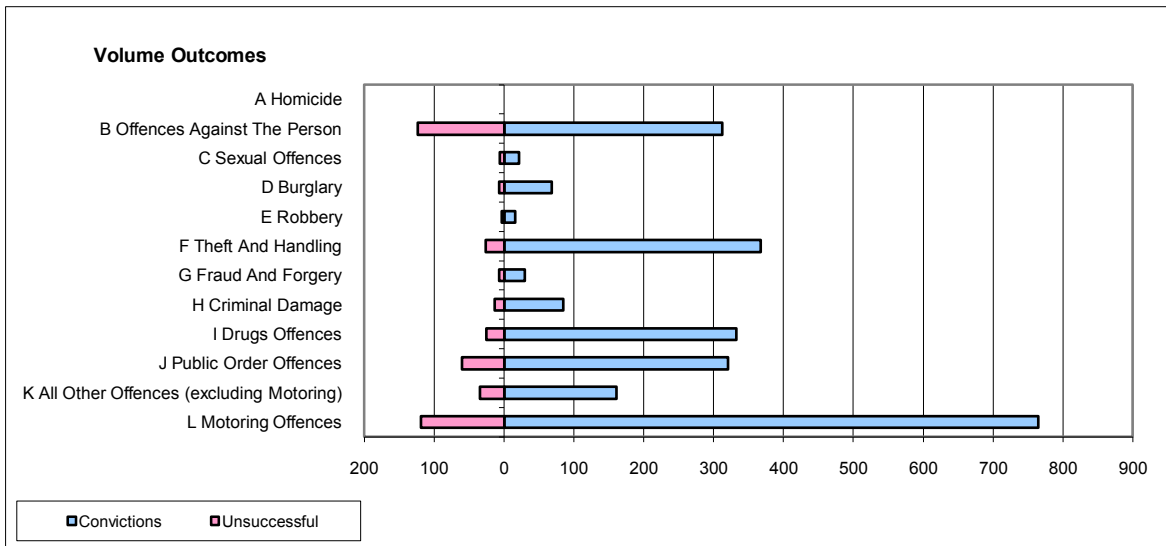
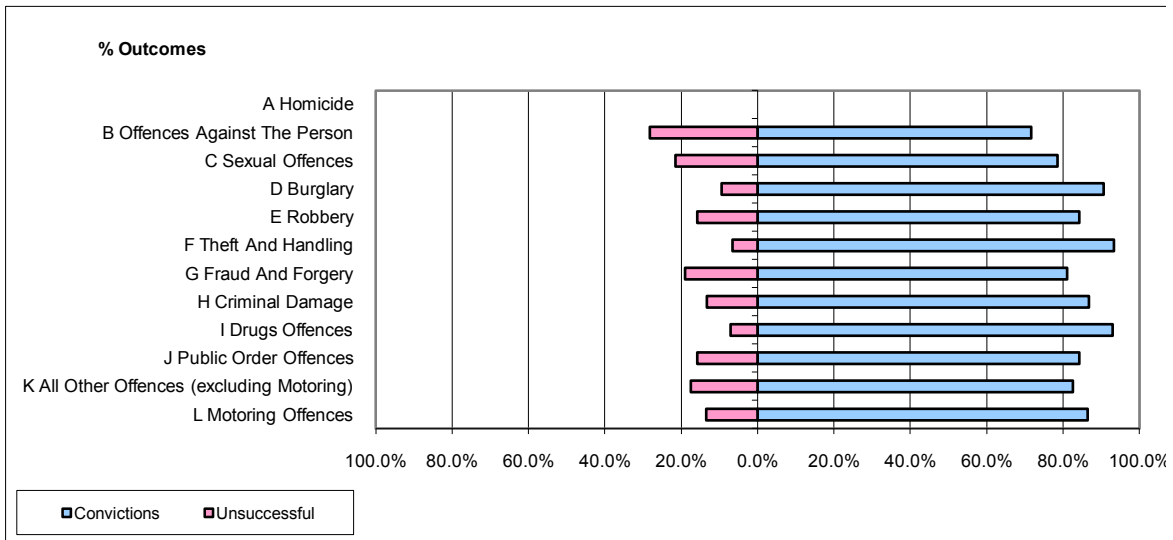


CPS OUTCOMES BY PRINCIPAL OFFENCE CATEGORY

June 2009

P24-Merseyside



	Convictions		Unsuccessful	
	Number of Defendants	%	Number of Defendants	%
A Homicide	0	0	0	0
B Offences Against The Person	312	71.7%	123	28.3%
C Sexual Offences	22	78.6%	6	21.4%
D Burglary	68	90.7%	7	9.3%
E Robbery	16	84.2%	3	15.8%
F Theft And Handling	367	93.4%	26	6.6%
G Fraud And Forgery	30	81.1%	7	18.9%
H Criminal Damage	85	86.7%	13	13.3%
I Drugs Offences	333	93.0%	25	7.0%
J Public Order Offences	321	84.3%	60	15.7%
K All Other Offences (excluding Motoring)	161	82.6%	34	17.4%
L Motoring Offences	765	86.5%	119	13.5%
Admin Finalisations	0	0.0%	27	100.0%
TOTAL	2,480	84.6%	450	15.4%