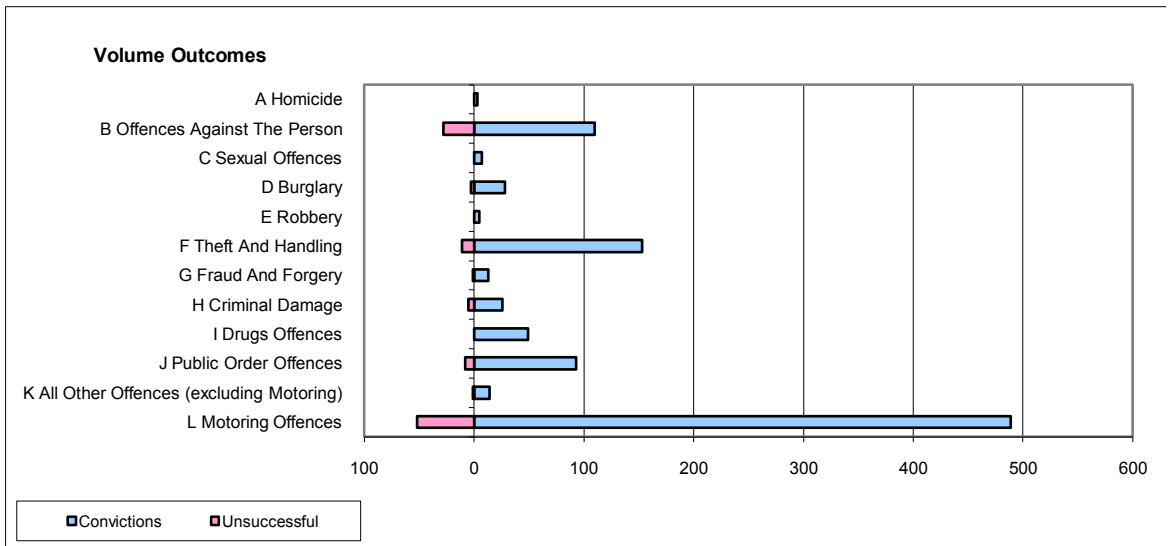
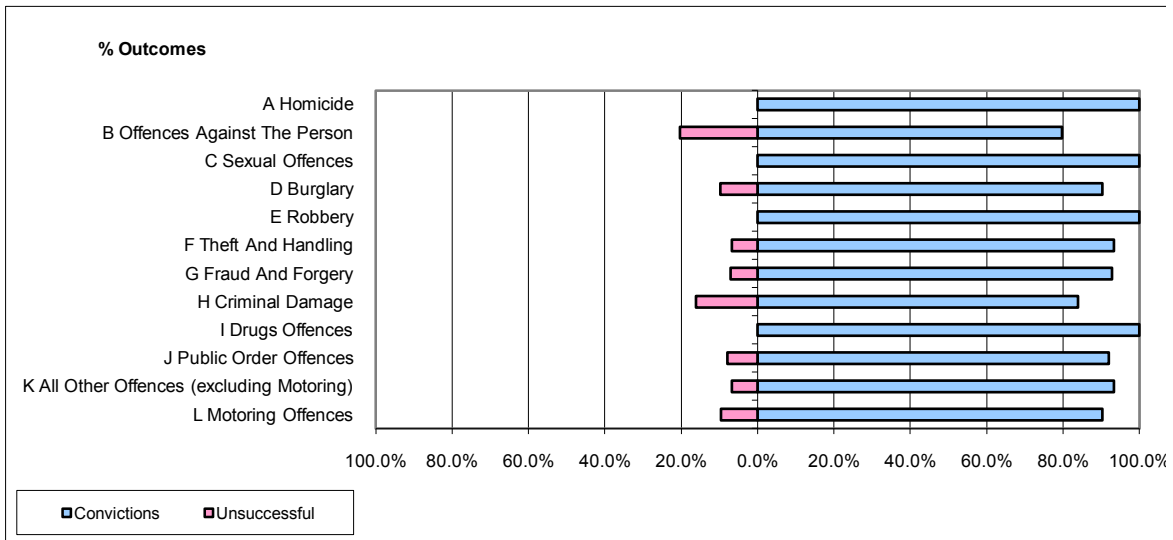


**CPS OUTCOMES BY PRINCIPAL OFFENCE CATEGORY**

**June 2009**

**P23-Lincolnshire**



	Convictions		Unsuccessful	
	Number of Defendants	%	Number of Defendants	%
<b>A Homicide</b>	3	100.0%	0	0.0%
<b>B Offences Against The Person</b>	110	79.7%	28	20.3%
<b>C Sexual Offences</b>	7	100.0%	0	0.0%
<b>D Burglary</b>	28	90.3%	3	9.7%
<b>E Robbery</b>	5	100.0%	0	0.0%
<b>F Theft And Handling</b>	153	93.3%	11	6.7%
<b>G Fraud And Forgery</b>	13	92.9%	1	7.1%
<b>H Criminal Damage</b>	26	83.9%	5	16.1%
<b>I Drugs Offences</b>	49	100.0%	0	0.0%
<b>J Public Order Offences</b>	93	92.1%	8	7.9%
<b>K All Other Offences (excluding Motoring)</b>	14	93.3%	1	6.7%
<b>L Motoring Offences</b>	489	90.4%	52	9.6%
<b>Admin Finalisations</b>	0	0.0%	6	100.0%
<b>TOTAL</b>	<b>990</b>	<b>89.6%</b>	<b>115</b>	<b>10.4%</b>