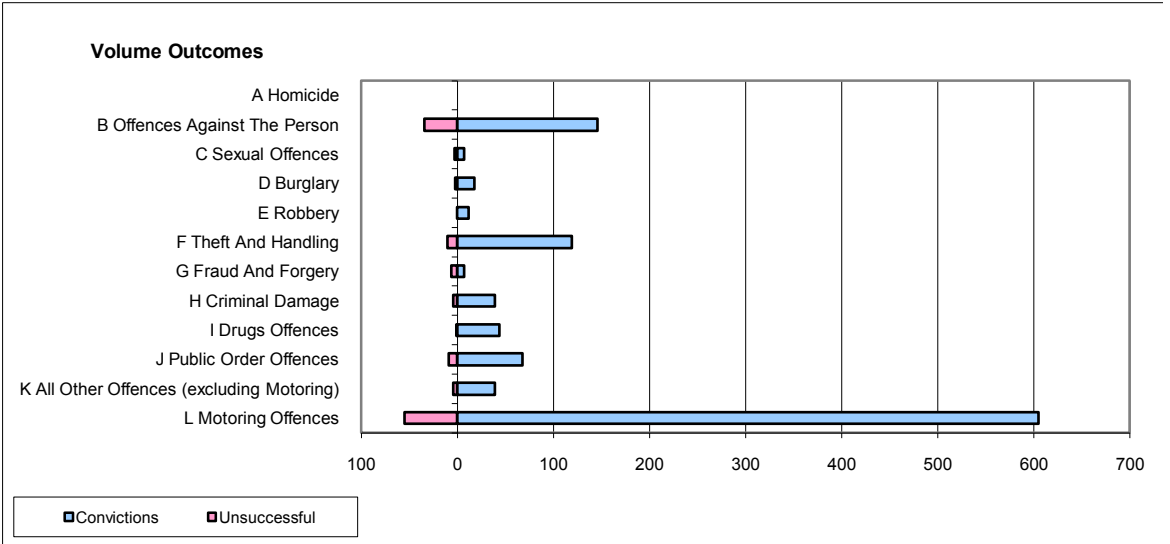
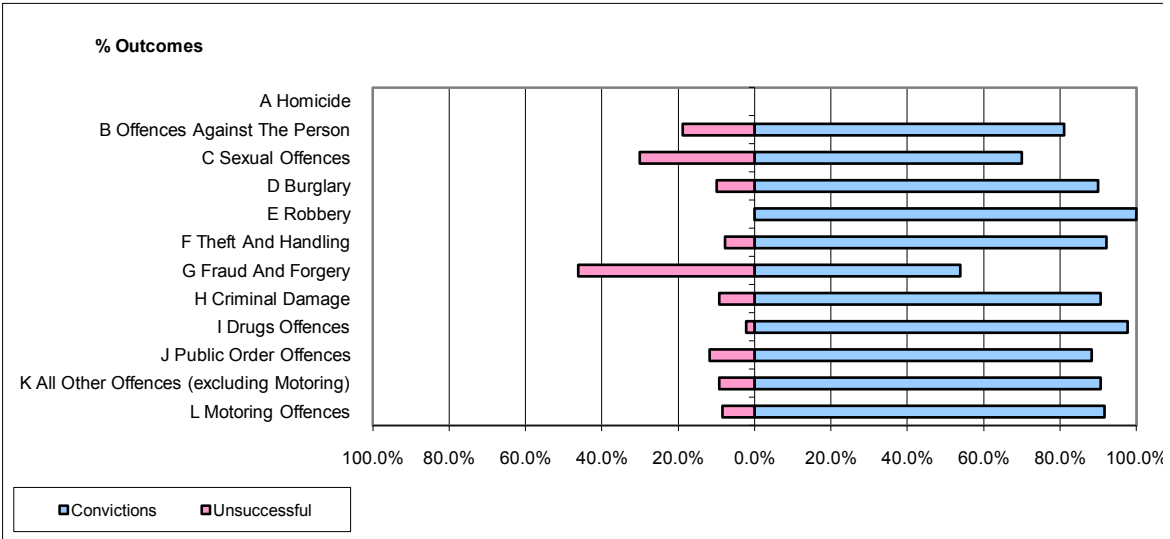


CPS OUTCOMES BY PRINCIPAL OFFENCE CATEGORY

June 2009

P22-Leicestershire



	Convictions		Unsuccessful	
	Number of Defendants	%	Number of Defendants	%
A Homicide	0	0	0	0
B Offences Against The Person	146	81.1%	34	18.9%
C Sexual Offences	7	70.0%	3	30.0%
D Burglary	18	90.0%	2	10.0%
E Robbery	12	100.0%	0	0.0%
F Theft And Handling	119	92.2%	10	7.8%
G Fraud And Forgery	7	53.8%	6	46.2%
H Criminal Damage	39	90.7%	4	9.3%
I Drugs Offences	44	97.8%	1	2.2%
J Public Order Offences	68	88.3%	9	11.7%
K All Other Offences (excluding Motoring)	39	90.7%	4	9.3%
L Motoring Offences	605	91.7%	55	8.3%
Admin Finalisations	0	0.0%	12	100.0%
TOTAL	1,104	88.7%	140	11.3%