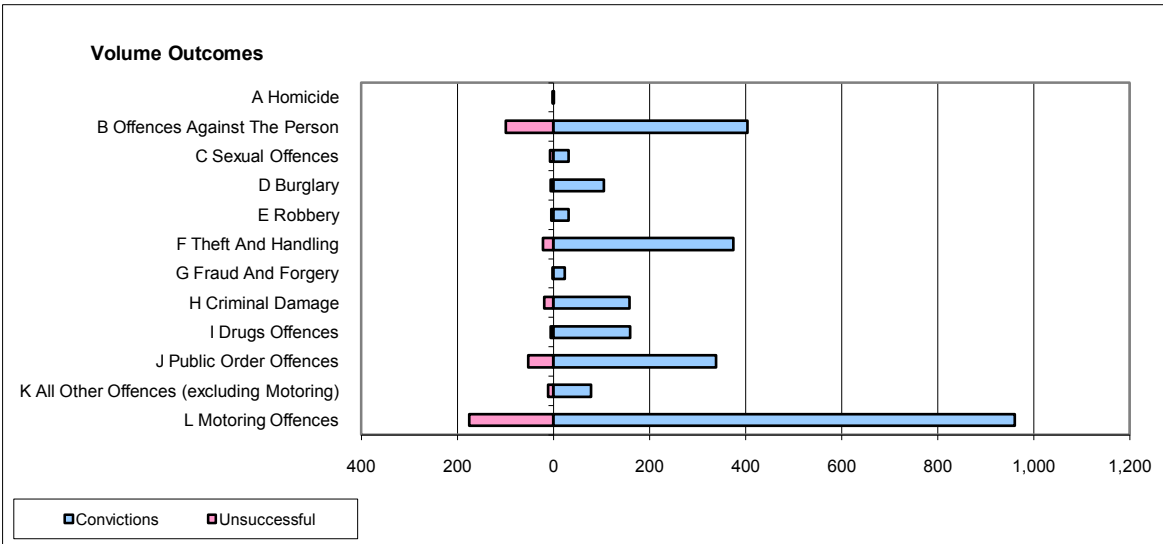
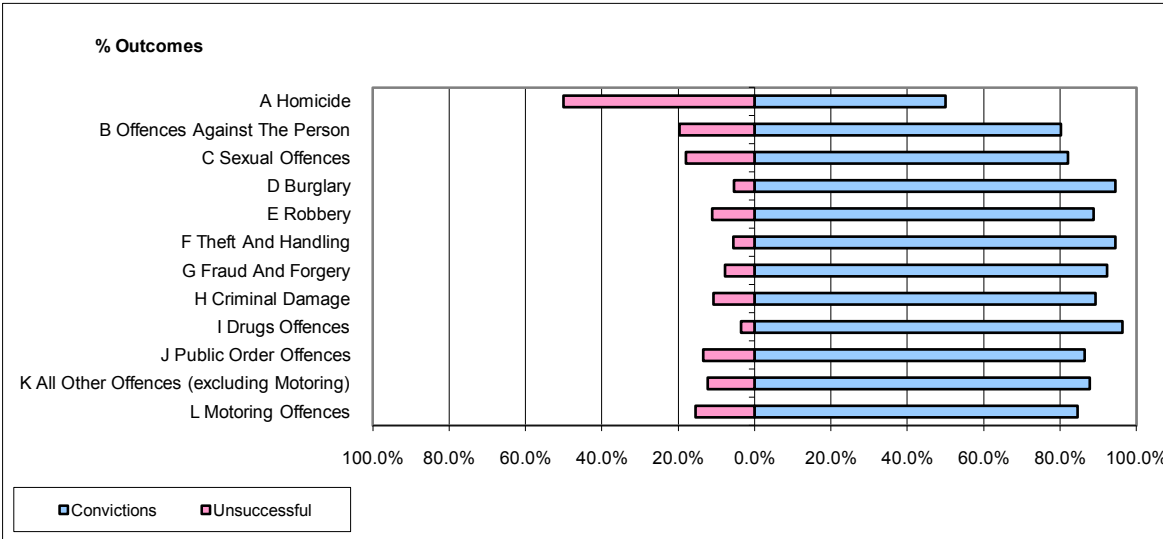


**CPS OUTCOMES BY PRINCIPAL OFFENCE CATEGORY**

**June 2009**

**P21-Lancashire**



	Convictions		Unsuccessful	
	Number of Defendants	%	Number of Defendants	%
<b>A Homicide</b>	1	50.0%	1	50.0%
<b>B Offences Against The Person</b>	404	80.3%	99	19.7%
<b>C Sexual Offences</b>	32	82.1%	7	17.9%
<b>D Burglary</b>	105	94.6%	6	5.4%
<b>E Robbery</b>	32	88.9%	4	11.1%
<b>F Theft And Handling</b>	374	94.4%	22	5.6%
<b>G Fraud And Forgery</b>	24	92.3%	2	7.7%
<b>H Criminal Damage</b>	159	89.3%	19	10.7%
<b>I Drugs Offences</b>	160	96.4%	6	3.6%
<b>J Public Order Offences</b>	339	86.5%	53	13.5%
<b>K All Other Offences (excluding Motoring)</b>	79	87.8%	11	12.2%
<b>L Motoring Offences</b>	961	84.6%	175	15.4%
<b>Admin Finalisations</b>	0	0.0%	32	100.0%
<b>TOTAL</b>	<b>2,670</b>	<b>85.9%</b>	<b>437</b>	<b>14.1%</b>