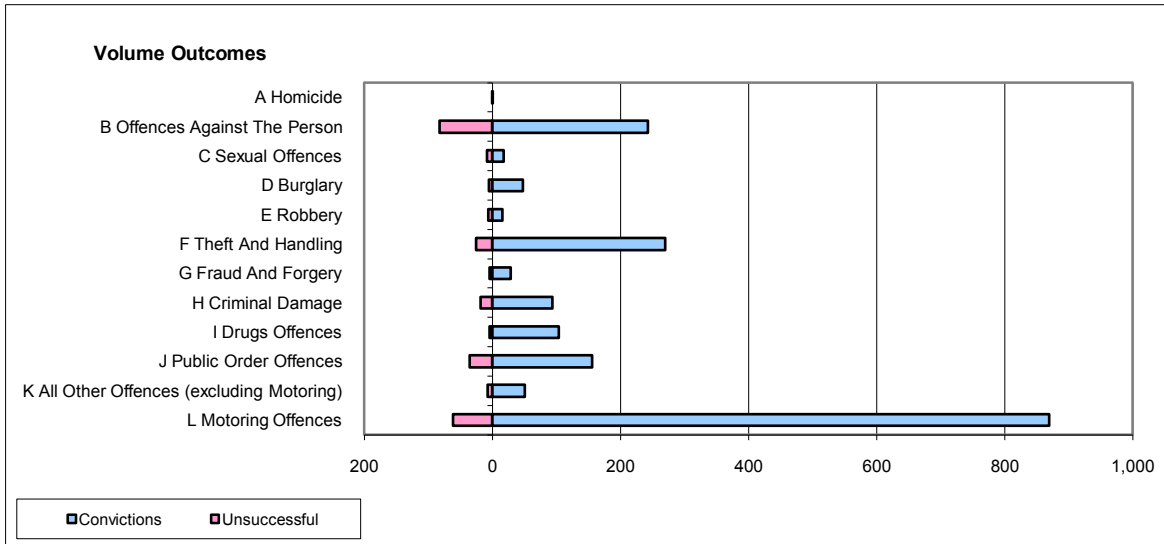
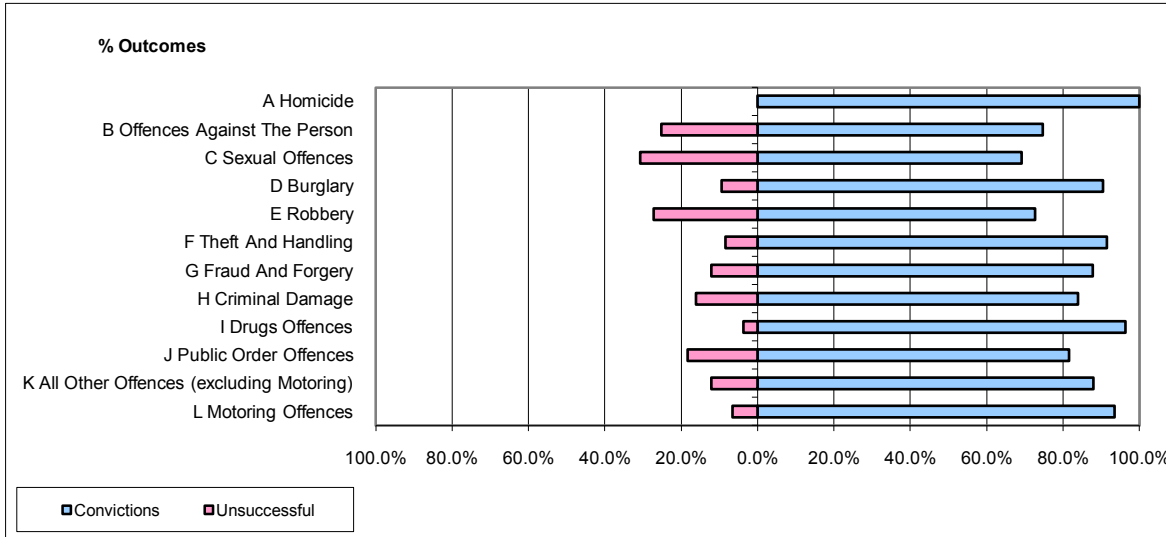


CPS OUTCOMES BY PRINCIPAL OFFENCE CATEGORY

June 2009

P20-Kent



	Convictions		Unsuccessful	
	Number of Defendants	%	Number of Defendants	%
A Homicide	1	100.0%	0	0.0%
B Offences Against The Person	243	74.8%	82	25.2%
C Sexual Offences	18	69.2%	8	30.8%
D Burglary	48	90.6%	5	9.4%
E Robbery	16	72.7%	6	27.3%
F Theft And Handling	270	91.5%	25	8.5%
G Fraud And Forgery	29	87.9%	4	12.1%
H Criminal Damage	94	83.9%	18	16.1%
I Drugs Offences	104	96.3%	4	3.7%
J Public Order Offences	156	81.7%	35	18.3%
K All Other Offences (excluding Motoring)	51	87.9%	7	12.1%
L Motoring Offences	869	93.4%	61	6.6%
Admin Finalisations	0	0.0%	13	100.0%
TOTAL	1,899	87.6%	268	12.4%