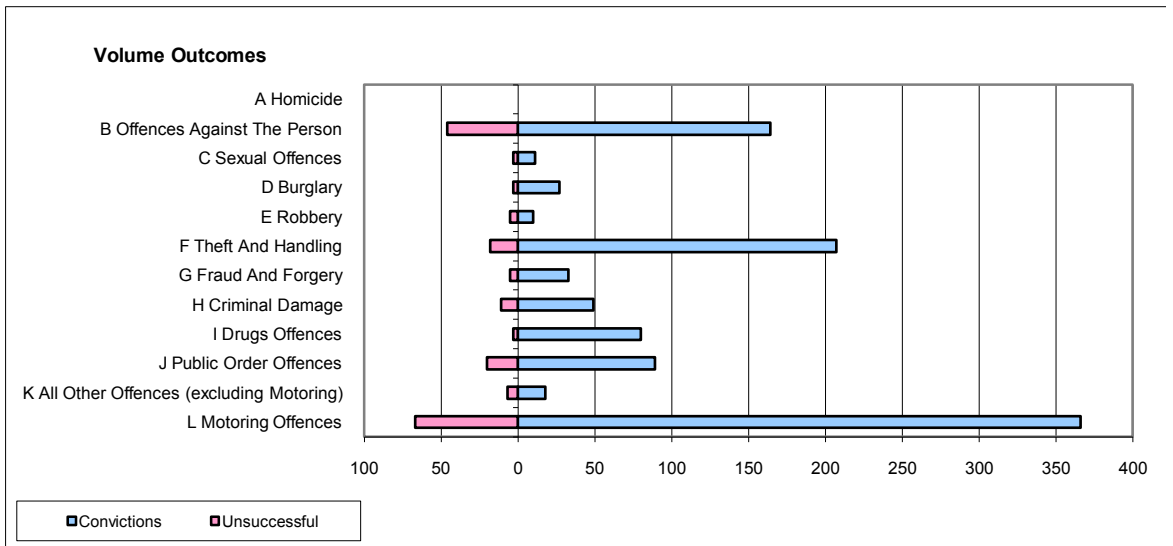
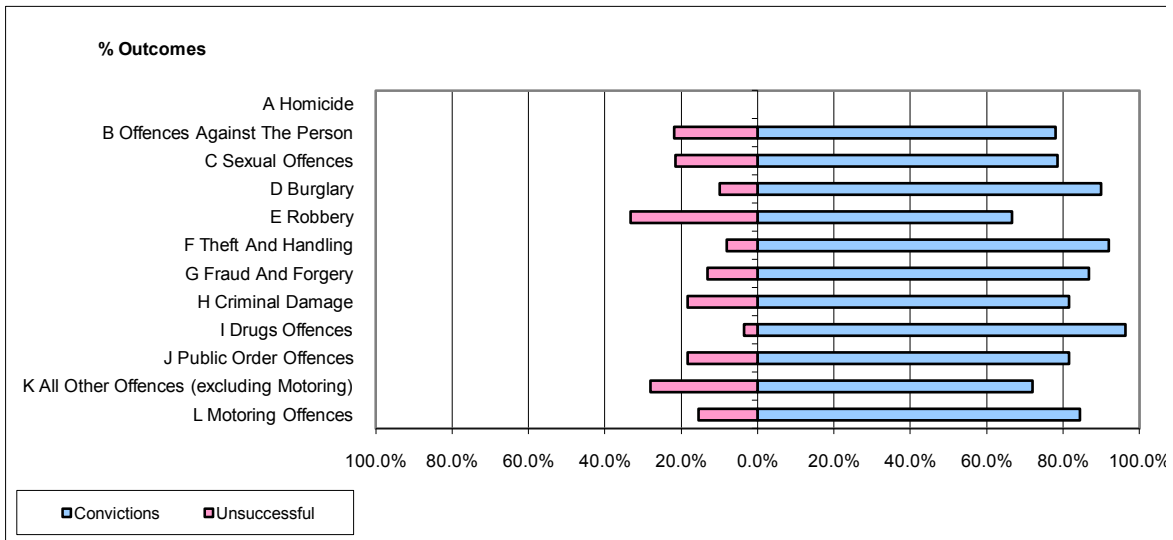


CPS OUTCOMES BY PRINCIPAL OFFENCE CATEGORY

June 2009

P18-Hertfordshire



	Convictions		Unsuccessful	
	Number of Defendants	%	Number of Defendants	%
A Homicide	0	0	0	0
B Offences Against The Person	164	78.1%	46	21.9%
C Sexual Offences	11	78.6%	3	21.4%
D Burglary	27	90.0%	3	10.0%
E Robbery	10	66.7%	5	33.3%
F Theft And Handling	207	92.0%	18	8.0%
G Fraud And Forgery	33	86.8%	5	13.2%
H Criminal Damage	49	81.7%	11	18.3%
I Drugs Offences	80	96.4%	3	3.6%
J Public Order Offences	89	81.7%	20	18.3%
K All Other Offences (excluding Motoring)	18	72.0%	7	28.0%
L Motoring Offences	366	84.5%	67	15.5%
Admin Finalisations	0	0.0%	24	100.0%
TOTAL	1,054	83.3%	212	16.7%