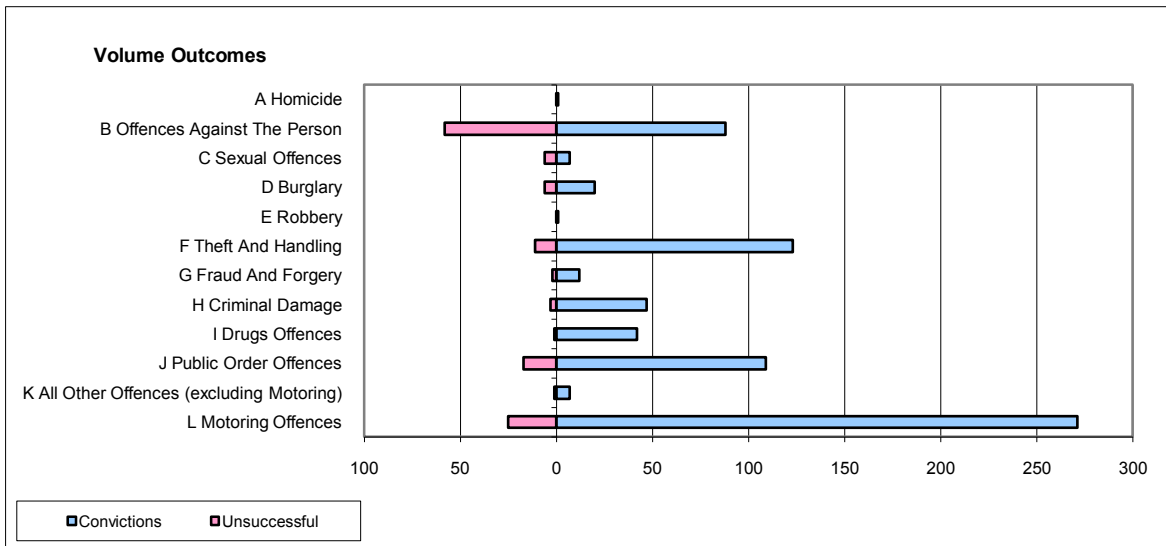
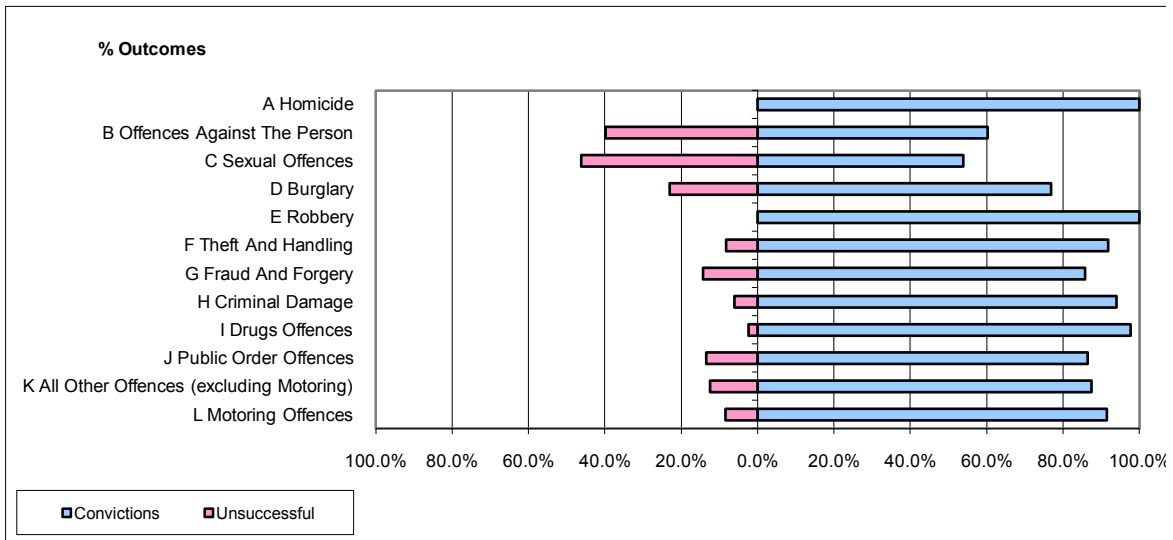


CPS OUTCOMES BY PRINCIPAL OFFENCE CATEGORY

June 2009

P16-Gwent



	Convictions		Unsuccessful	
	Number of Defendants	%	Number of Defendants	%
A Homicide	1	100.0%	0	0.0%
B Offences Against The Person	88	60.3%	58	39.7%
C Sexual Offences	7	53.8%	6	46.2%
D Burglary	20	76.9%	6	23.1%
E Robbery	1	100.0%	0	0.0%
F Theft And Handling	123	91.8%	11	8.2%
G Fraud And Forgery	12	85.7%	2	14.3%
H Criminal Damage	47	94.0%	3	6.0%
I Drugs Offences	42	97.7%	1	2.3%
J Public Order Offences	109	86.5%	17	13.5%
K All Other Offences (excluding Motoring)	7	87.5%	1	12.5%
L Motoring Offences	271	91.6%	25	8.4%
Admin Finalisations	0	0.0%	10	100.0%
TOTAL	728	83.9%	140	16.1%