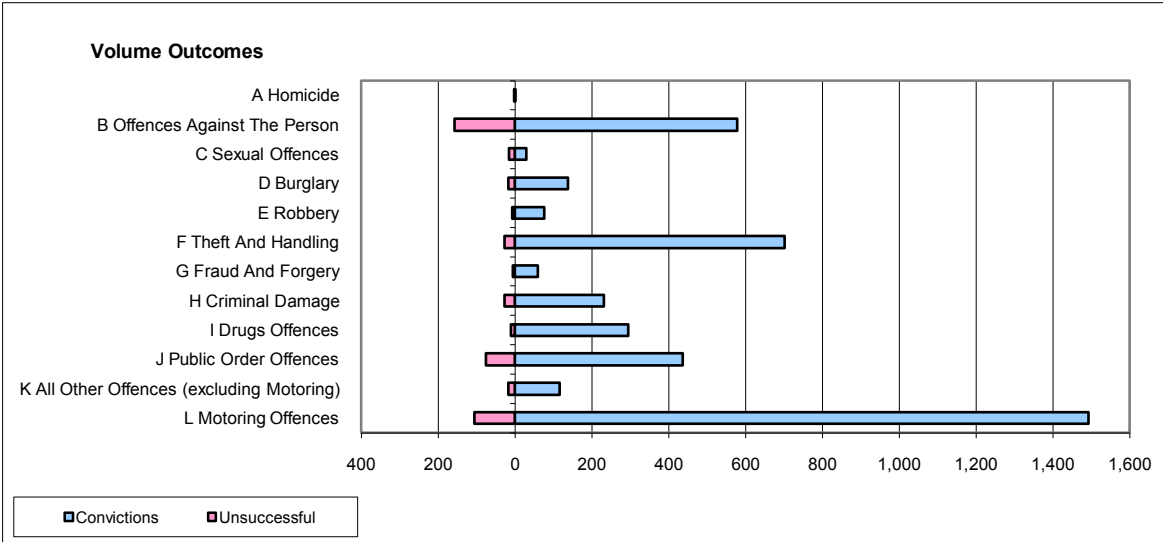
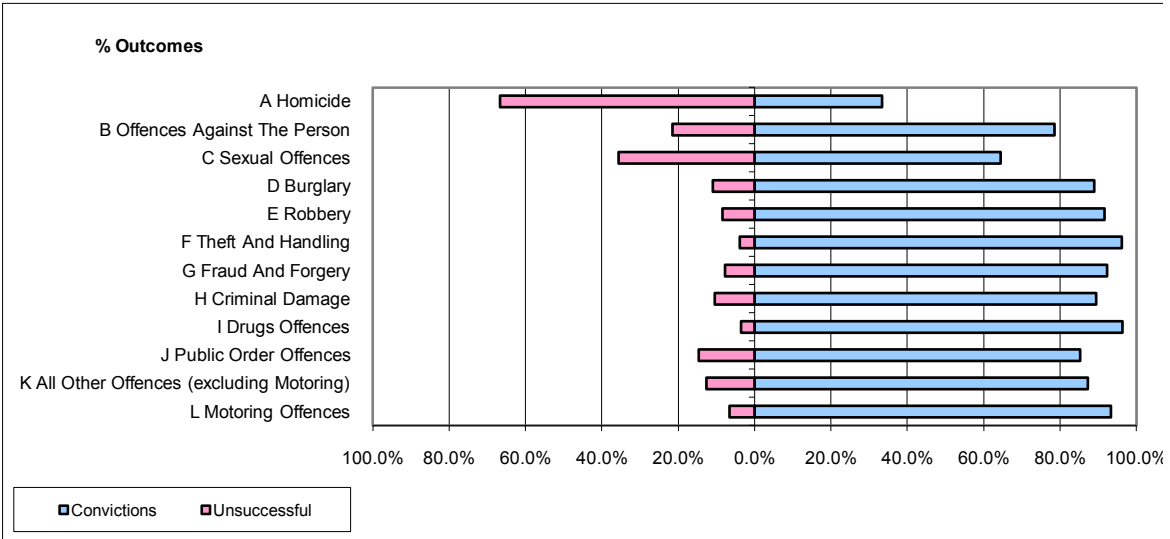


CPS OUTCOMES BY PRINCIPAL OFFENCE CATEGORY

June 2009

P15-GreaterManchester



	Convictions		Unsuccessful	
	Number of Defendants	%	Number of Defendants	%
A Homicide	1	33.3%	2	66.7%
B Offences Against The Person	579	78.6%	158	21.4%
C Sexual Offences	29	64.4%	16	35.6%
D Burglary	138	89.0%	17	11.0%
E Robbery	77	91.7%	7	8.3%
F Theft And Handling	702	96.2%	28	3.8%
G Fraud And Forgery	60	92.3%	5	7.7%
H Criminal Damage	231	89.5%	27	10.5%
I Drugs Offences	294	96.4%	11	3.6%
J Public Order Offences	437	85.4%	75	14.6%
K All Other Offences (excluding Motoring)	117	87.3%	17	12.7%
L Motoring Offences	1,493	93.4%	105	6.6%
Admin Finalisations	0	0.0%	86	100.0%
TOTAL	4,158	88.2%	554	11.8%