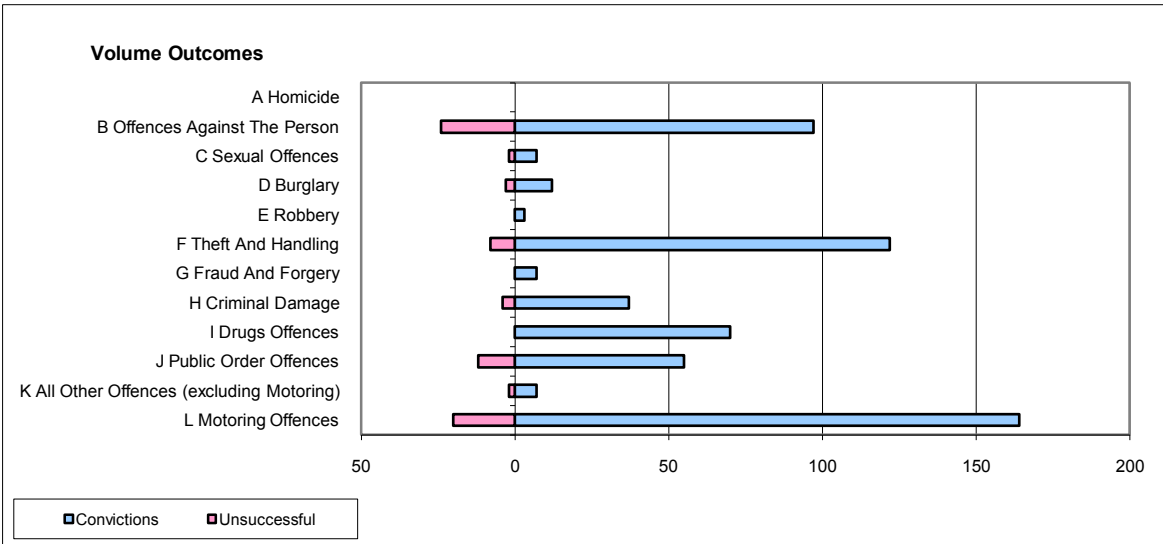
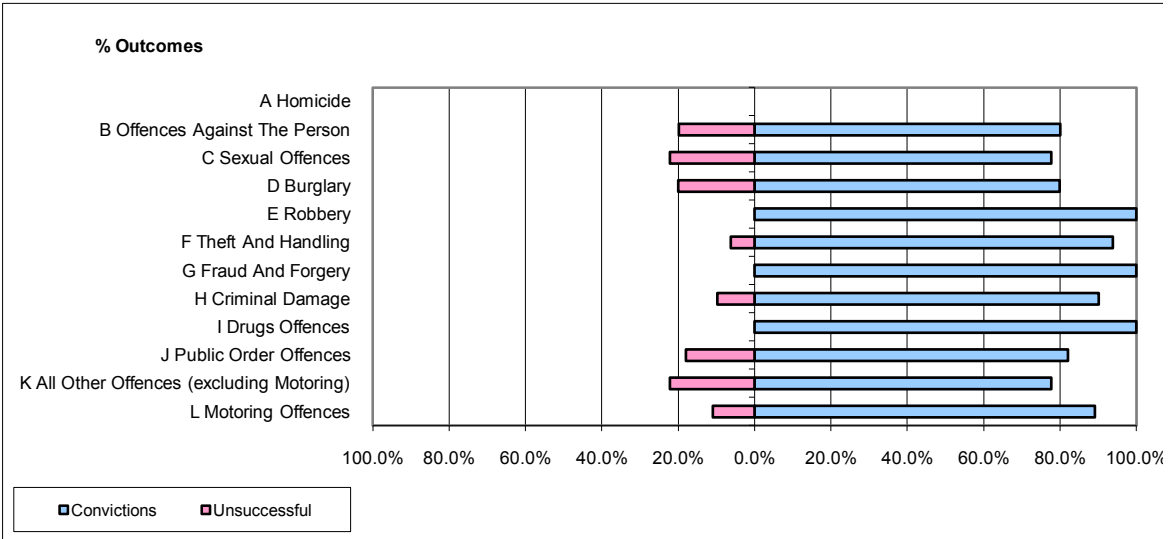


**CPS OUTCOMES BY PRINCIPAL OFFENCE CATEGORY**

**June 2009**

**P14-Gloucestershire**



	Convictions		Unsuccessful	
	Number of Defendants	%	Number of Defendants	%
<b>A Homicide</b>	0	0	0	0
<b>B Offences Against The Person</b>	97	80.2%	24	19.8%
<b>C Sexual Offences</b>	7	77.8%	2	22.2%
<b>D Burglary</b>	12	80.0%	3	20.0%
<b>E Robbery</b>	3	100.0%	0	0.0%
<b>F Theft And Handling</b>	122	93.8%	8	6.2%
<b>G Fraud And Forgery</b>	7	100.0%	0	0.0%
<b>H Criminal Damage</b>	37	90.2%	4	9.8%
<b>I Drugs Offences</b>	70	100.0%	0	0.0%
<b>J Public Order Offences</b>	55	82.1%	12	17.9%
<b>K All Other Offences (excluding Motoring)</b>	7	77.8%	2	22.2%
<b>L Motoring Offences</b>	164	89.1%	20	10.9%
<b>Admin Finalisations</b>	0	0.0%	4	100.0%
<b>TOTAL</b>	<b>581</b>	<b>88.0%</b>	<b>79</b>	<b>12.0%</b>