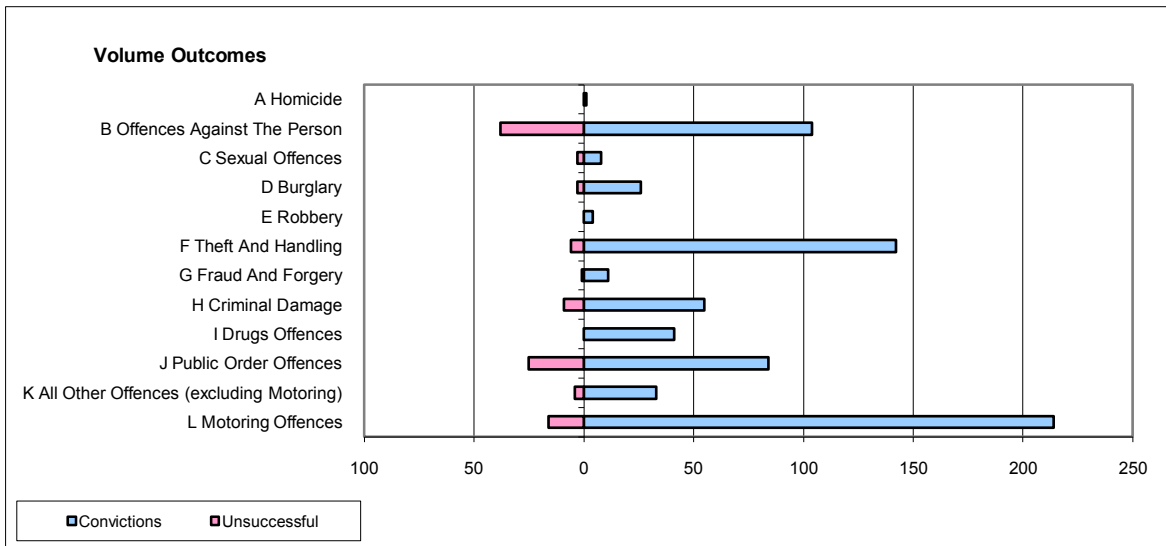
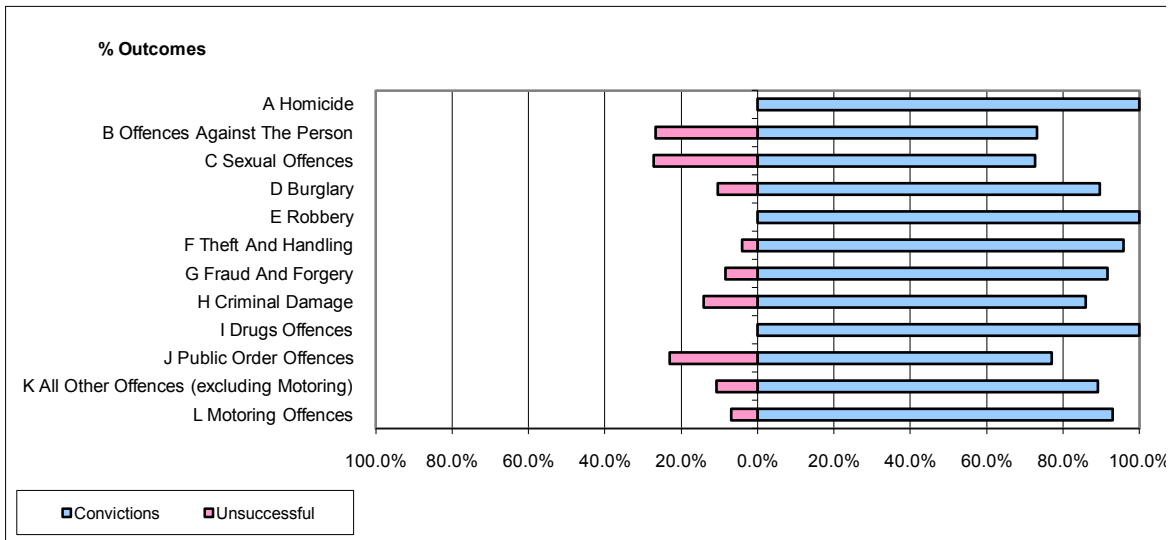


**CPS OUTCOMES BY PRINCIPAL OFFENCE CATEGORY**

June 2009

**P11-Durham**



	Convictions		Unsuccessful	
	Number of Defendants	%	Number of Defendants	%
<b>A Homicide</b>	1	100.0%	0	0.0%
<b>B Offences Against The Person</b>	104	73.2%	38	26.8%
<b>C Sexual Offences</b>	8	72.7%	3	27.3%
<b>D Burglary</b>	26	89.7%	3	10.3%
<b>E Robbery</b>	4	100.0%	0	0.0%
<b>F Theft And Handling</b>	142	95.9%	6	4.1%
<b>G Fraud And Forgery</b>	11	91.7%	1	8.3%
<b>H Criminal Damage</b>	55	85.9%	9	14.1%
<b>I Drugs Offences</b>	41	100.0%	0	0.0%
<b>J Public Order Offences</b>	84	77.1%	25	22.9%
<b>K All Other Offences (excluding Motoring)</b>	33	89.2%	4	10.8%
<b>L Motoring Offences</b>	214	93.0%	16	7.0%
<b>Admin Finalisations</b>	0	0.0%	4	100.0%
<b>TOTAL</b>	<b>723</b>	<b>86.9%</b>	<b>109</b>	<b>13.1%</b>