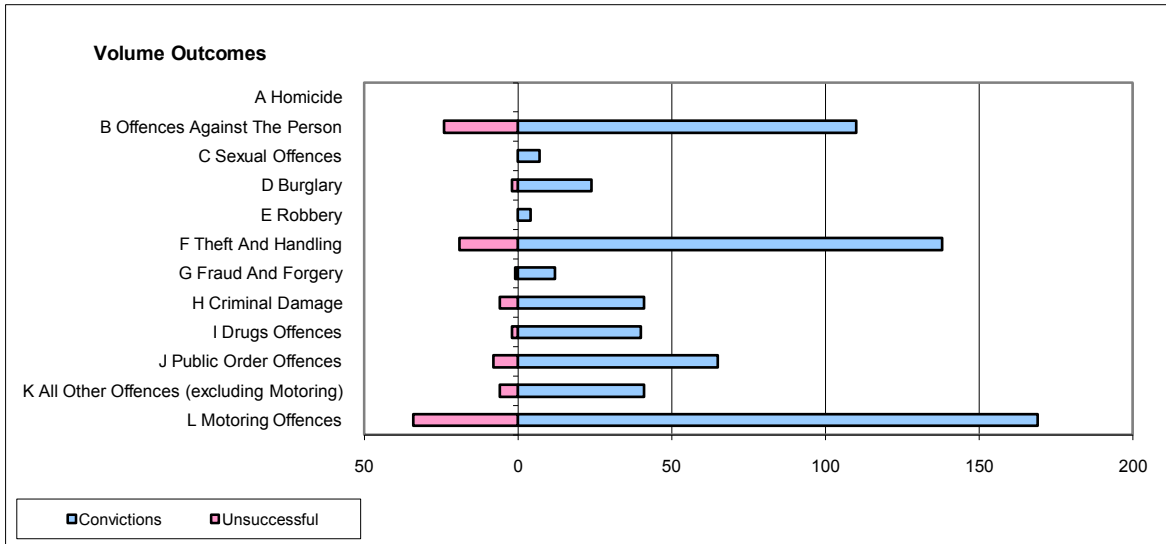
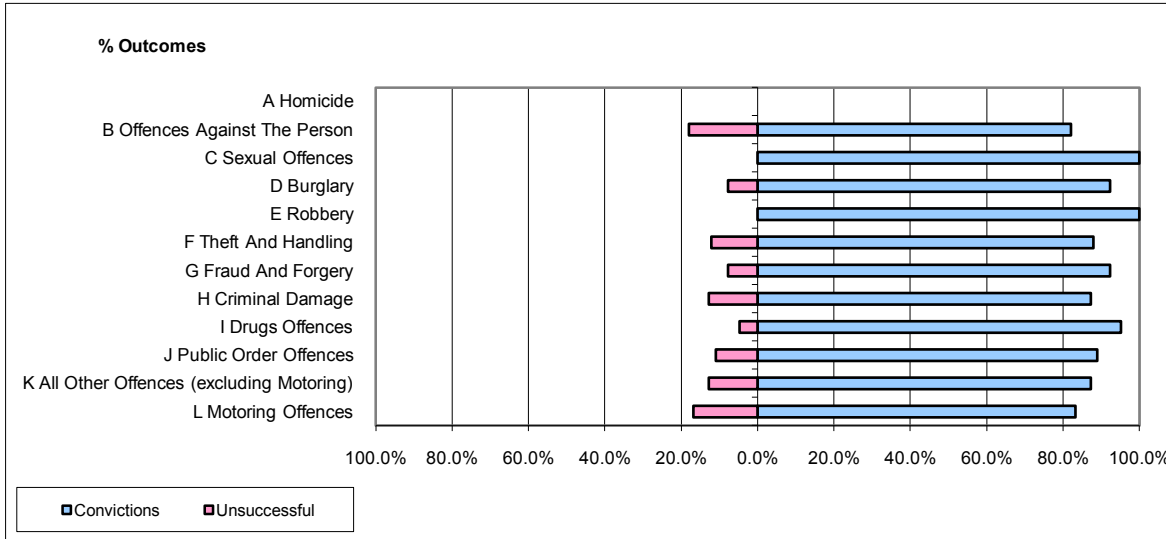


**CPS OUTCOMES BY PRINCIPAL OFFENCE CATEGORY**

**June 2009**

**P10-Dorset**



	Convictions		Unsuccessful	
	Number of Defendants	%	Number of Defendants	%
<b>A Homicide</b>	0	0	0	0
<b>B Offences Against The Person</b>	110	82.1%	24	17.9%
<b>C Sexual Offences</b>	7	100.0%	0	0.0%
<b>D Burglary</b>	24	92.3%	2	7.7%
<b>E Robbery</b>	4	100.0%	0	0.0%
<b>F Theft And Handling</b>	138	87.9%	19	12.1%
<b>G Fraud And Forgery</b>	12	92.3%	1	7.7%
<b>H Criminal Damage</b>	41	87.2%	6	12.8%
<b>I Drugs Offences</b>	40	95.2%	2	4.8%
<b>J Public Order Offences</b>	65	89.0%	8	11.0%
<b>K All Other Offences (excluding Motoring)</b>	41	87.2%	6	12.8%
<b>L Motoring Offences</b>	169	83.3%	34	16.7%
<b>Admin Finalisations</b>	0	0.0%	9	100.0%
<b>TOTAL</b>	<b>651</b>	<b>85.4%</b>	<b>111</b>	<b>14.6%</b>