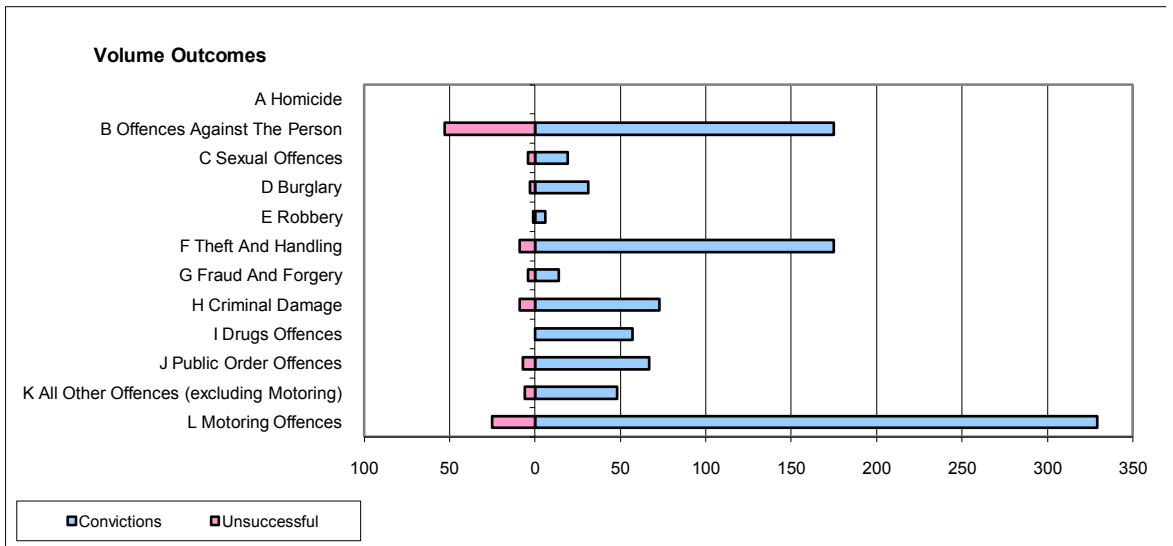
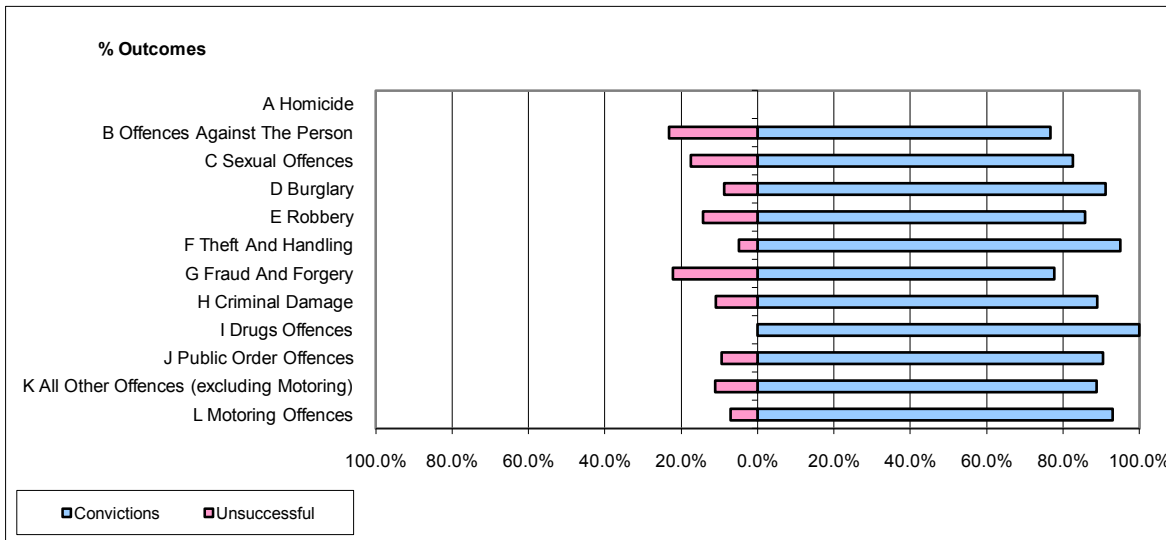


**CPS OUTCOMES BY PRINCIPAL OFFENCE CATEGORY**

June 2009

**P08-Derbyshire**



	Convictions		Unsuccessful	
	Number of Defendants	%	Number of Defendants	%
<b>A Homicide</b>	0	0	0	0
<b>B Offences Against The Person</b>	175	76.8%	53	23.2%
<b>C Sexual Offences</b>	19	82.6%	4	17.4%
<b>D Burglary</b>	31	91.2%	3	8.8%
<b>E Robbery</b>	6	85.7%	1	14.3%
<b>F Theft And Handling</b>	175	95.1%	9	4.9%
<b>G Fraud And Forgery</b>	14	77.8%	4	22.2%
<b>H Criminal Damage</b>	73	89.0%	9	11.0%
<b>I Drugs Offences</b>	57	100.0%	0	0.0%
<b>J Public Order Offences</b>	67	90.5%	7	9.5%
<b>K All Other Offences (excluding Motoring)</b>	48	88.9%	6	11.1%
<b>L Motoring Offences</b>	329	92.9%	25	7.1%
<b>Admin Finalisations</b>	0	0.0%	7	100.0%
<b>TOTAL</b>	<b>994</b>	<b>88.6%</b>	<b>128</b>	<b>11.4%</b>