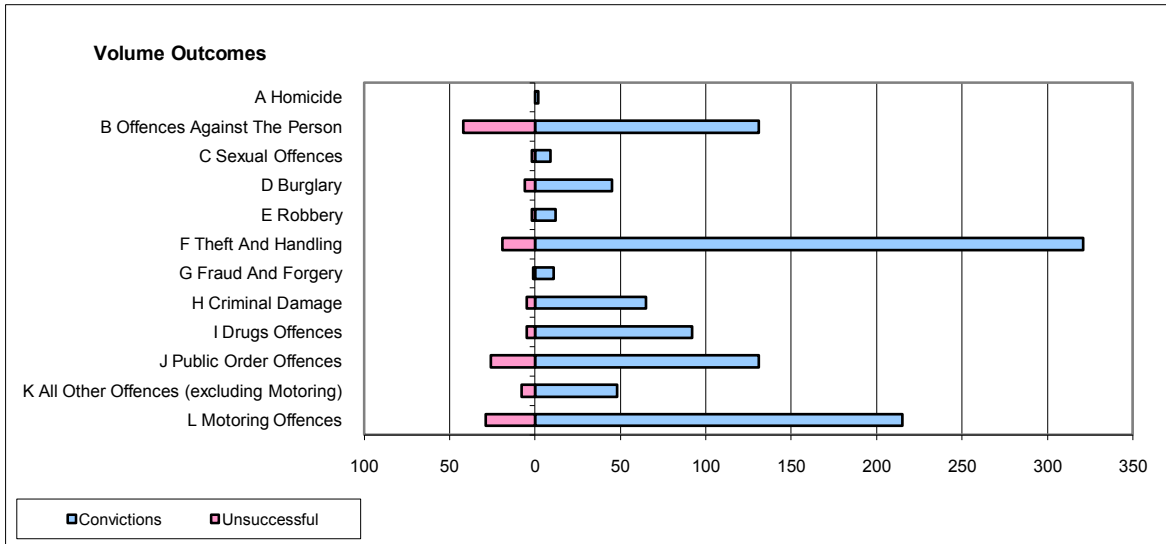
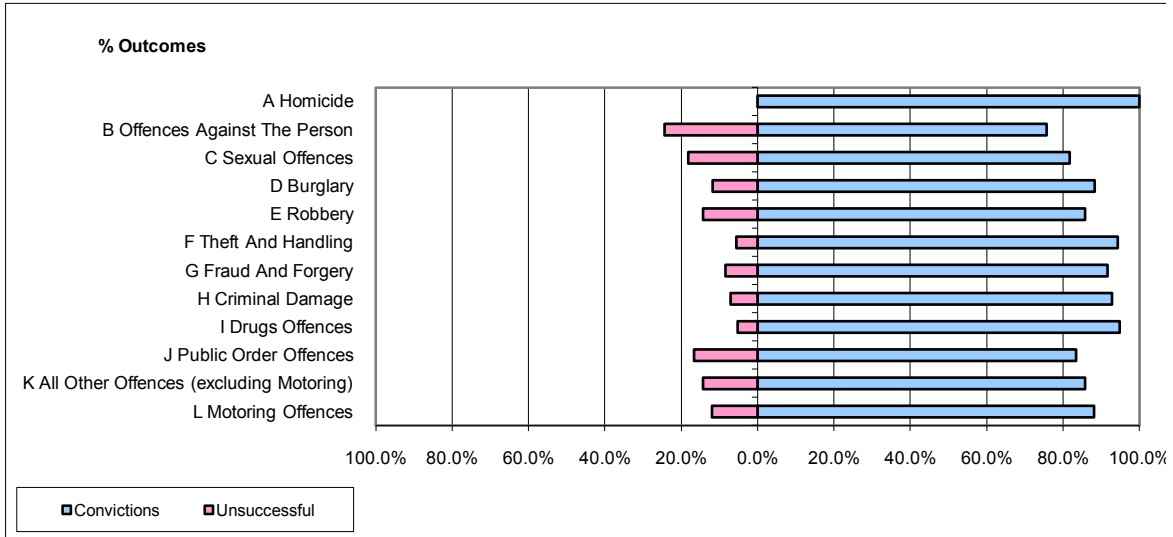


**CPS OUTCOMES BY PRINCIPAL OFFENCE CATEGORY**

**June 2009**

**P06-Cleveland**



	Convictions		Unsuccessful	
	Number of Defendants	%	Number of Defendants	%
<b>A Homicide</b>	2	100.0%	0	0.0%
<b>B Offences Against The Person</b>	131	75.7%	42	24.3%
<b>C Sexual Offences</b>	9	81.8%	2	18.2%
<b>D Burglary</b>	45	88.2%	6	11.8%
<b>E Robbery</b>	12	85.7%	2	14.3%
<b>F Theft And Handling</b>	321	94.4%	19	5.6%
<b>G Fraud And Forgery</b>	11	91.7%	1	8.3%
<b>H Criminal Damage</b>	65	92.9%	5	7.1%
<b>I Drugs Offences</b>	92	94.8%	5	5.2%
<b>J Public Order Offences</b>	131	83.4%	26	16.6%
<b>K All Other Offences (excluding Motoring)</b>	48	85.7%	8	14.3%
<b>L Motoring Offences</b>	215	88.1%	29	11.9%
<b>Admin Finalisations</b>	0	0.0%	8	100.0%
<b>TOTAL</b>	<b>1,082</b>	<b>87.6%</b>	<b>153</b>	<b>12.4%</b>