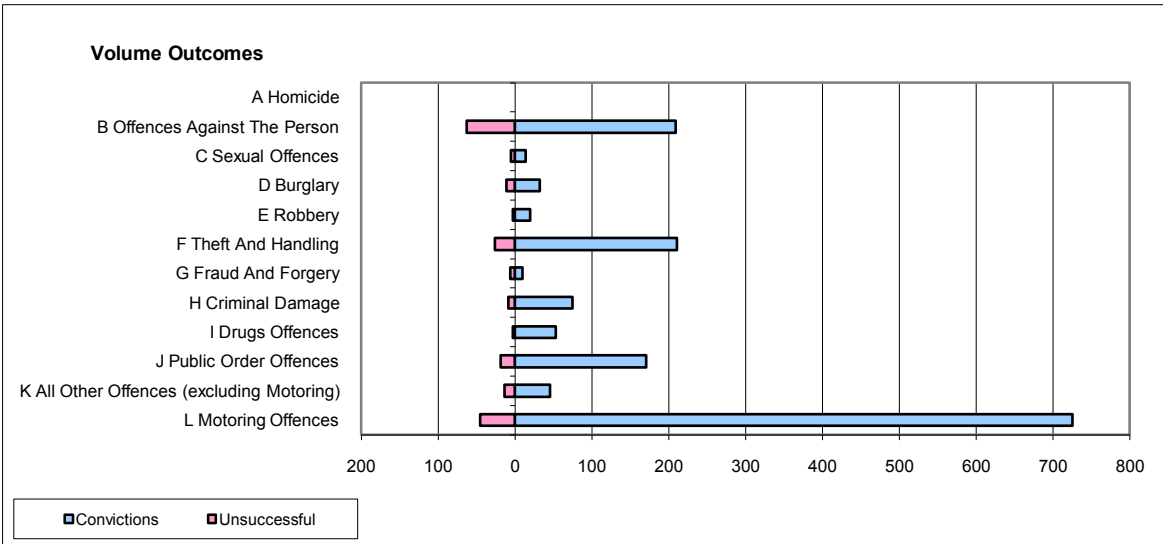
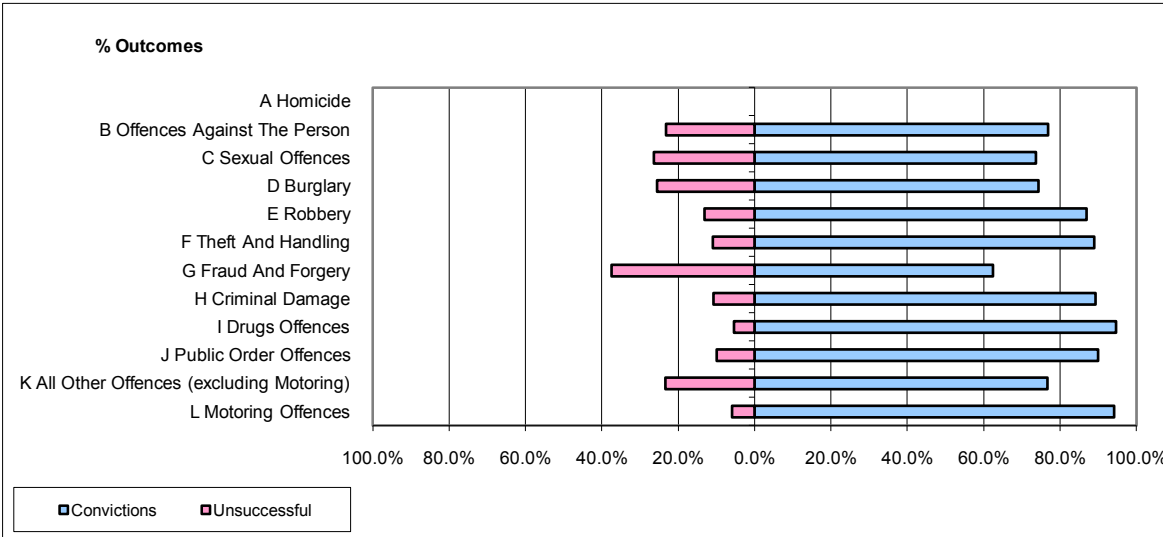


**CPS OUTCOMES BY PRINCIPAL OFFENCE CATEGORY**

**June 2009**

**P04-Cheshire**



	Convictions		Unsuccessful	
	Number of Defendants	%	Number of Defendants	%
<b>A Homicide</b>	<b>0</b>	<b>0</b>	<b>0</b>	<b>0</b>
<b>B Offences Against The Person</b>	<b>209</b>	<b>76.8%</b>	<b>63</b>	<b>23.2%</b>
<b>C Sexual Offences</b>	<b>14</b>	<b>73.7%</b>	<b>5</b>	<b>26.3%</b>
<b>D Burglary</b>	<b>32</b>	<b>74.4%</b>	<b>11</b>	<b>25.6%</b>
<b>E Robbery</b>	<b>20</b>	<b>87.0%</b>	<b>3</b>	<b>13.0%</b>
<b>F Theft And Handling</b>	<b>211</b>	<b>89.0%</b>	<b>26</b>	<b>11.0%</b>
<b>G Fraud And Forgery</b>	<b>10</b>	<b>62.5%</b>	<b>6</b>	<b>37.5%</b>
<b>H Criminal Damage</b>	<b>75</b>	<b>89.3%</b>	<b>9</b>	<b>10.7%</b>
<b>I Drugs Offences</b>	<b>53</b>	<b>94.6%</b>	<b>3</b>	<b>5.4%</b>
<b>J Public Order Offences</b>	<b>171</b>	<b>90.0%</b>	<b>19</b>	<b>10.0%</b>
<b>K All Other Offences (excluding Motoring)</b>	<b>46</b>	<b>76.7%</b>	<b>14</b>	<b>23.3%</b>
<b>L Motoring Offences</b>	<b>725</b>	<b>94.2%</b>	<b>45</b>	<b>5.8%</b>
<b>Admin Finalisations</b>	<b>0</b>	<b>0.0%</b>	<b>26</b>	<b>100.0%</b>
<b>TOTAL</b>	<b>1,566</b>	<b>87.2%</b>	<b>230</b>	<b>12.8%</b>