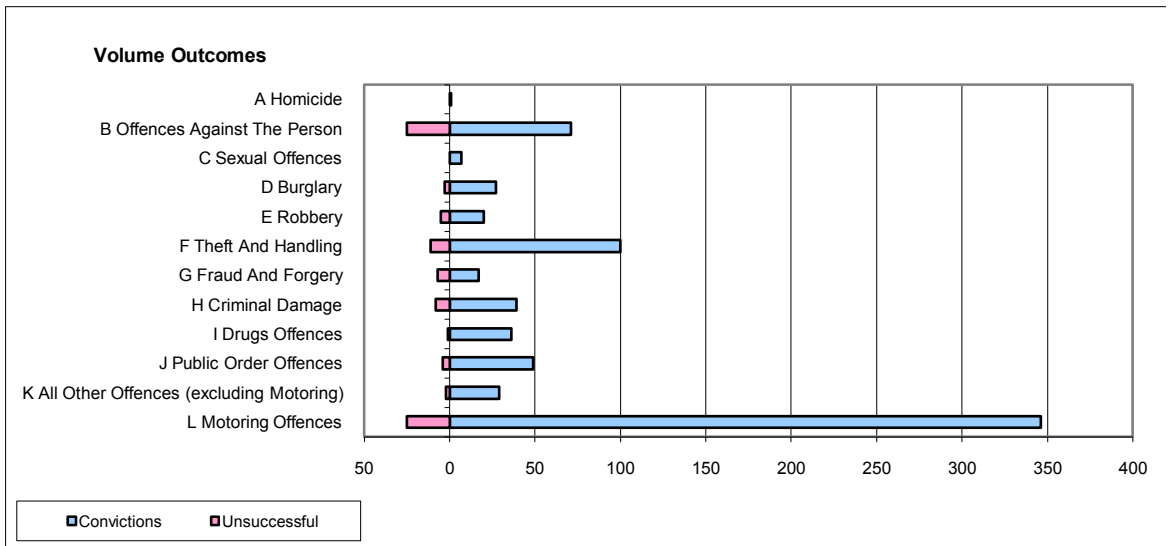
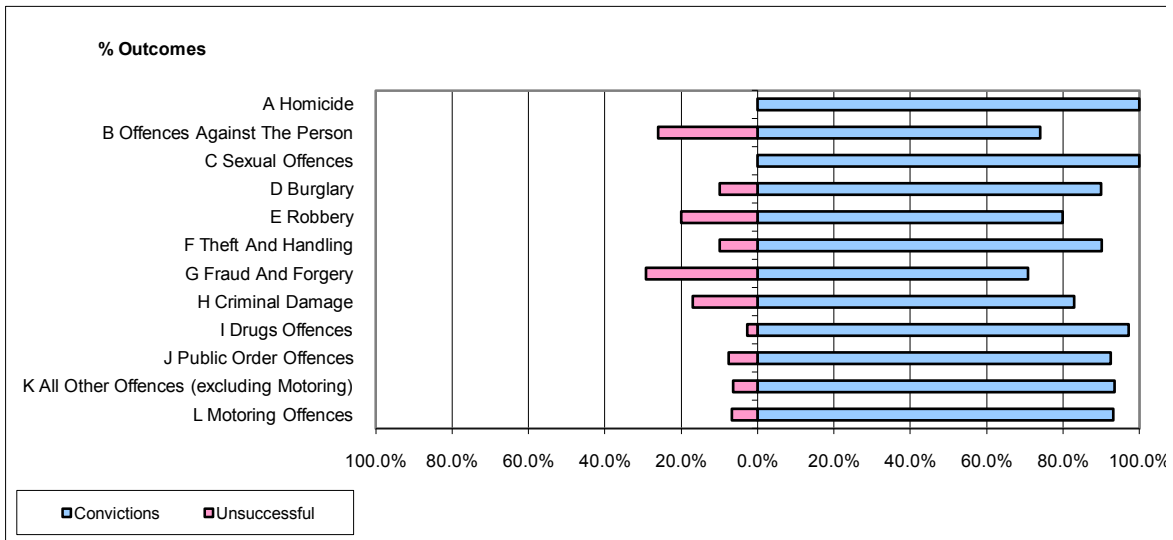


**CPS OUTCOMES BY PRINCIPAL OFFENCE CATEGORY**

**June 2009**

**P02-Bedfordshire**



	Convictions		Unsuccessful	
	Number of Defendants	%	Number of Defendants	%
<b>A Homicide</b>	<b>1</b>	<b>100.0%</b>	<b>0</b>	<b>0.0%</b>
<b>B Offences Against The Person</b>	<b>71</b>	<b>74.0%</b>	<b>25</b>	<b>26.0%</b>
<b>C Sexual Offences</b>	<b>7</b>	<b>100.0%</b>	<b>0</b>	<b>0.0%</b>
<b>D Burglary</b>	<b>27</b>	<b>90.0%</b>	<b>3</b>	<b>10.0%</b>
<b>E Robbery</b>	<b>20</b>	<b>80.0%</b>	<b>5</b>	<b>20.0%</b>
<b>F Theft And Handling</b>	<b>100</b>	<b>90.1%</b>	<b>11</b>	<b>9.9%</b>
<b>G Fraud And Forgery</b>	<b>17</b>	<b>70.8%</b>	<b>7</b>	<b>29.2%</b>
<b>H Criminal Damage</b>	<b>39</b>	<b>83.0%</b>	<b>8</b>	<b>17.0%</b>
<b>I Drugs Offences</b>	<b>36</b>	<b>97.3%</b>	<b>1</b>	<b>2.7%</b>
<b>J Public Order Offences</b>	<b>49</b>	<b>92.5%</b>	<b>4</b>	<b>7.5%</b>
<b>K All Other Offences (excluding Motoring)</b>	<b>29</b>	<b>93.5%</b>	<b>2</b>	<b>6.5%</b>
<b>L Motoring Offences</b>	<b>346</b>	<b>93.3%</b>	<b>25</b>	<b>6.7%</b>
<b>Admin Finalisations</b>	<b>0</b>	<b>0.0%</b>	<b>13</b>	<b>100.0%</b>
<b>TOTAL</b>	<b>742</b>	<b>87.7%</b>	<b>104</b>	<b>12.3%</b>