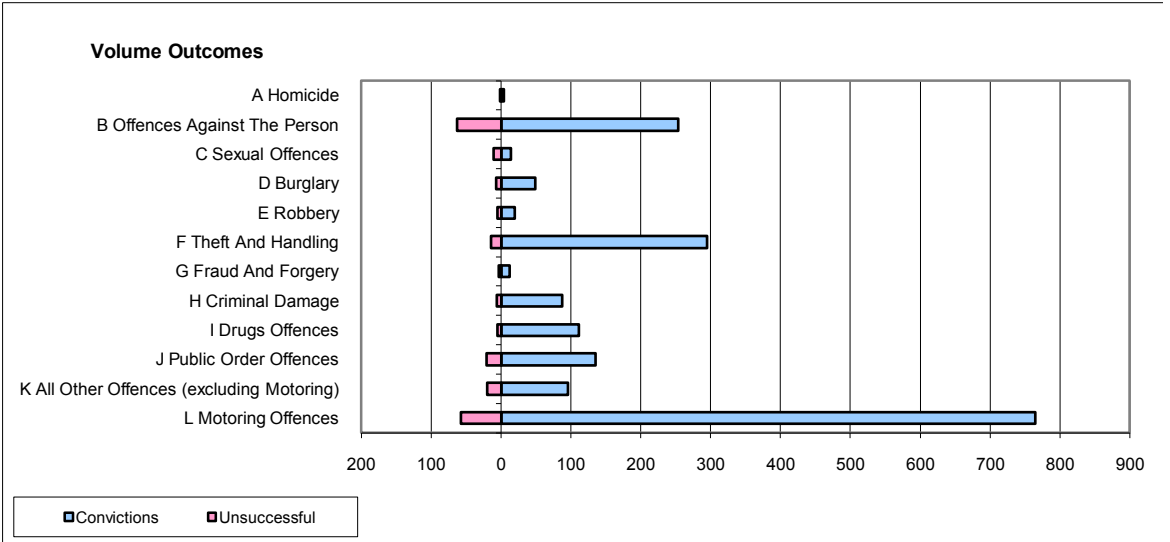
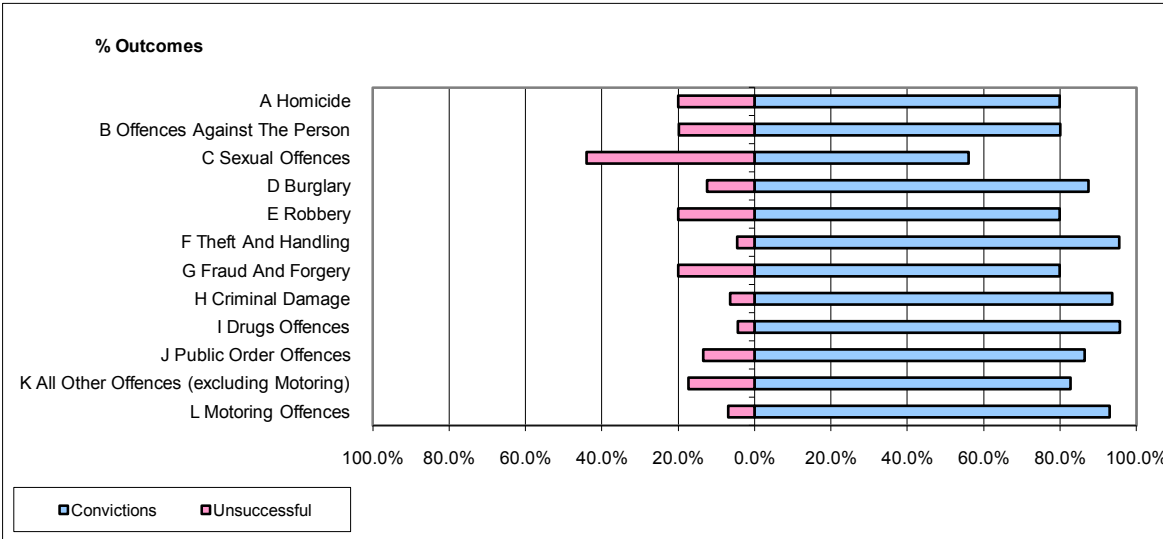


**CPS OUTCOMES BY PRINCIPAL OFFENCE CATEGORY**

**June 2009**

**P01-Avon&Somerset**



	Convictions		Unsuccessful	
	Number of Defendants	%	Number of Defendants	%
<b>A Homicide</b>	4	80.0%	1	20.0%
<b>B Offences Against The Person</b>	254	80.1%	63	19.9%
<b>C Sexual Offences</b>	14	56.0%	11	44.0%
<b>D Burglary</b>	49	87.5%	7	12.5%
<b>E Robbery</b>	20	80.0%	5	20.0%
<b>F Theft And Handling</b>	295	95.5%	14	4.5%
<b>G Fraud And Forgery</b>	12	80.0%	3	20.0%
<b>H Criminal Damage</b>	88	93.6%	6	6.4%
<b>I Drugs Offences</b>	111	95.7%	5	4.3%
<b>J Public Order Offences</b>	135	86.5%	21	13.5%
<b>K All Other Offences (excluding Motoring)</b>	96	82.8%	20	17.2%
<b>L Motoring Offences</b>	765	93.1%	57	6.9%
<b>Admin Finalisations</b>	0	0.0%	18	100.0%
<b>TOTAL</b>	<b>1,843</b>	<b>88.9%</b>	<b>231</b>	<b>11.1%</b>