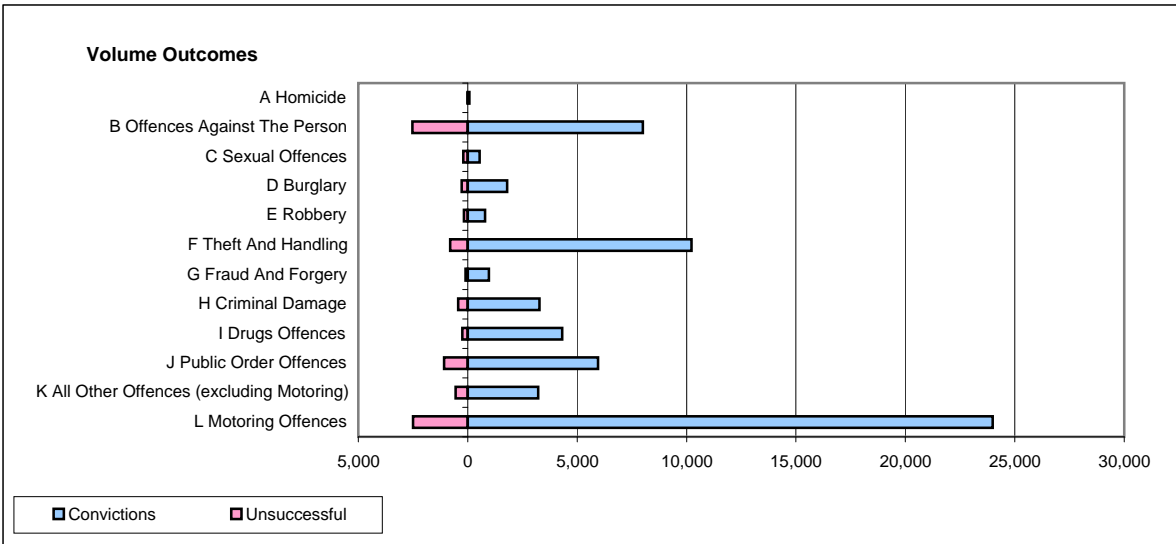
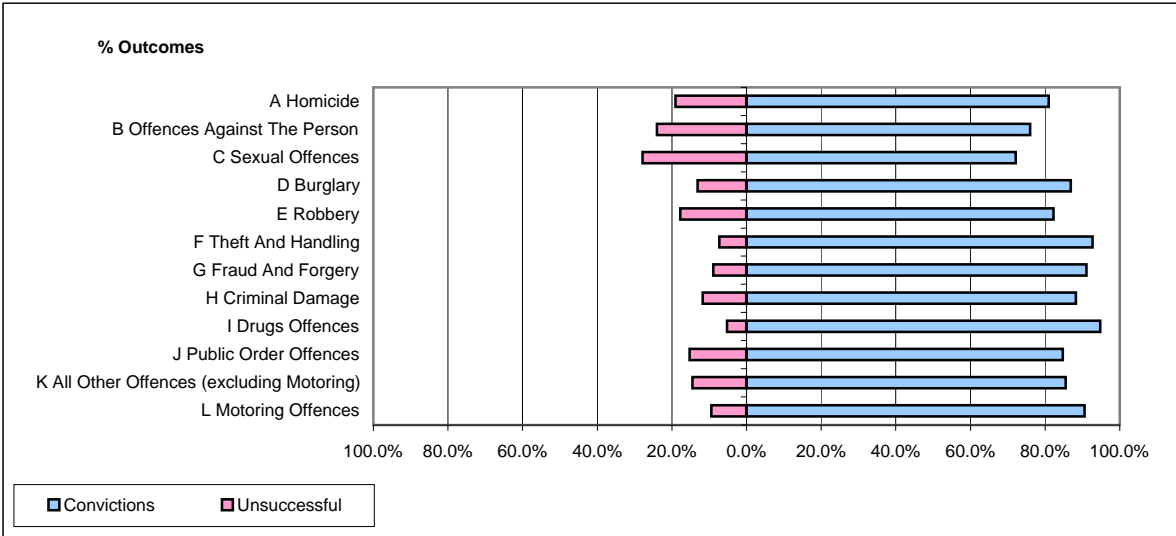


CPS OUTCOMES BY PRINCIPAL OFFENCE CATEGORY

May 2009

42 Areas



	Convictions		Unsuccessful	
	Number of Defendants	%	Number of Defendants	%
A Homicide	68	81.0%	16	19.0%
B Offences Against The Person	7,998	76.0%	2,529	24.0%
C Sexual Offences	536	72.1%	207	27.9%
D Burglary	1,799	86.9%	272	13.1%
E Robbery	793	82.3%	171	17.7%
F Theft And Handling	10,220	92.7%	807	7.3%
G Fraud And Forgery	963	91.1%	94	8.9%
H Criminal Damage	3,275	88.3%	435	11.7%
I Drugs Offences	4,317	94.7%	240	5.3%
J Public Order Offences	5,954	84.7%	1,073	15.3%
K All Other Offences (excluding Motoring)	3,223	85.5%	548	14.5%
L Motoring Offences	23,990	90.6%	2,496	9.4%
Admin Finalisations	0	0.0%	1,032	100.0%
TOTAL	63,136	86.4%	9,920	13.6%