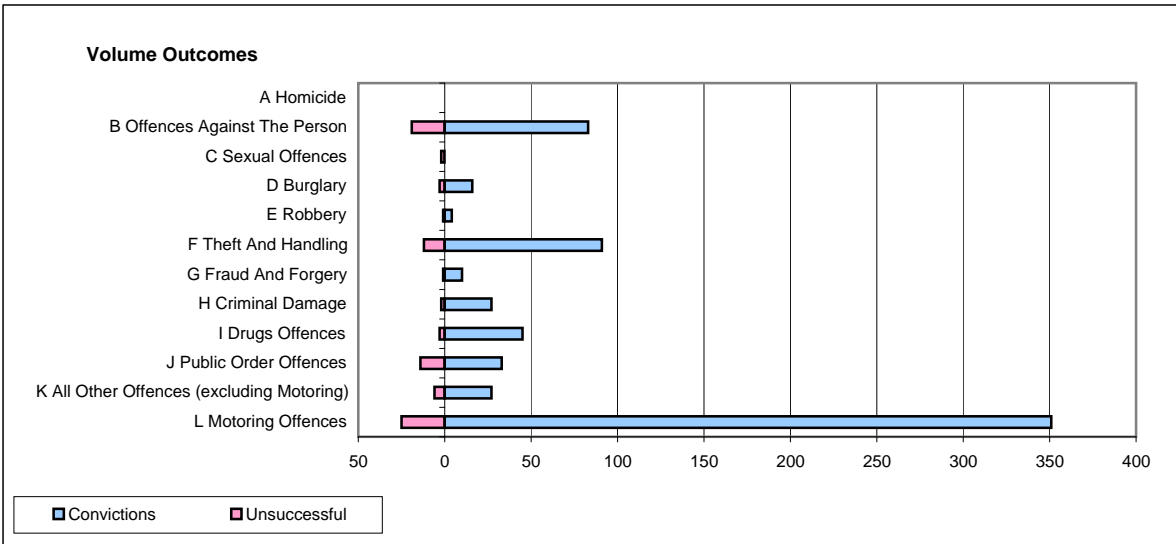
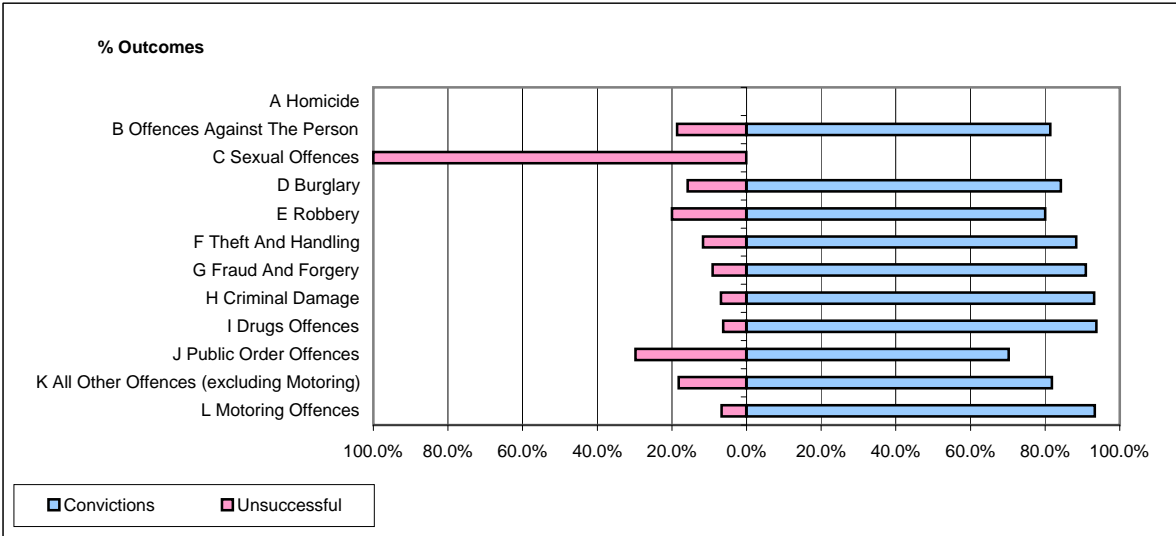


**CPS OUTCOMES BY PRINCIPAL OFFENCE CATEGORY**

**May 2009**

**P43-Wiltshire**



	Convictions		Unsuccessful	
	Number of Defendants	%	Number of Defendants	%
<b>A Homicide</b>	<b>0</b>	<b>0</b>	<b>0</b>	<b>0</b>
<b>B Offences Against The Person</b>	<b>83</b>	<b>81.4%</b>	<b>19</b>	<b>18.6%</b>
<b>C Sexual Offences</b>	<b>0</b>	<b>0.0%</b>	<b>2</b>	<b>100.0%</b>
<b>D Burglary</b>	<b>16</b>	<b>84.2%</b>	<b>3</b>	<b>15.8%</b>
<b>E Robbery</b>	<b>4</b>	<b>80.0%</b>	<b>1</b>	<b>20.0%</b>
<b>F Theft And Handling</b>	<b>91</b>	<b>88.3%</b>	<b>12</b>	<b>11.7%</b>
<b>G Fraud And Forgery</b>	<b>10</b>	<b>90.9%</b>	<b>1</b>	<b>9.1%</b>
<b>H Criminal Damage</b>	<b>27</b>	<b>93.1%</b>	<b>2</b>	<b>6.9%</b>
<b>I Drugs Offences</b>	<b>45</b>	<b>93.8%</b>	<b>3</b>	<b>6.3%</b>
<b>J Public Order Offences</b>	<b>33</b>	<b>70.2%</b>	<b>14</b>	<b>29.8%</b>
<b>K All Other Offences (excluding Motoring)</b>	<b>27</b>	<b>81.8%</b>	<b>6</b>	<b>18.2%</b>
<b>L Motoring Offences</b>	<b>351</b>	<b>93.4%</b>	<b>25</b>	<b>6.6%</b>
<b>Admin Finalisations</b>	<b>0</b>	<b>0.0%</b>	<b>9</b>	<b>100.0%</b>
<b>TOTAL</b>	<b>687</b>	<b>87.6%</b>	<b>97</b>	<b>12.4%</b>