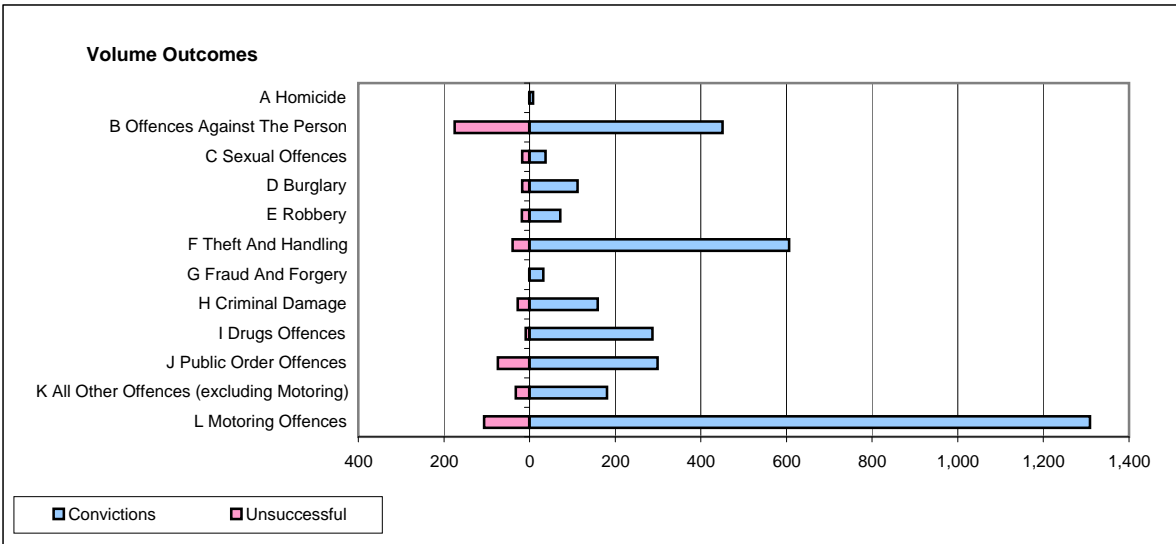
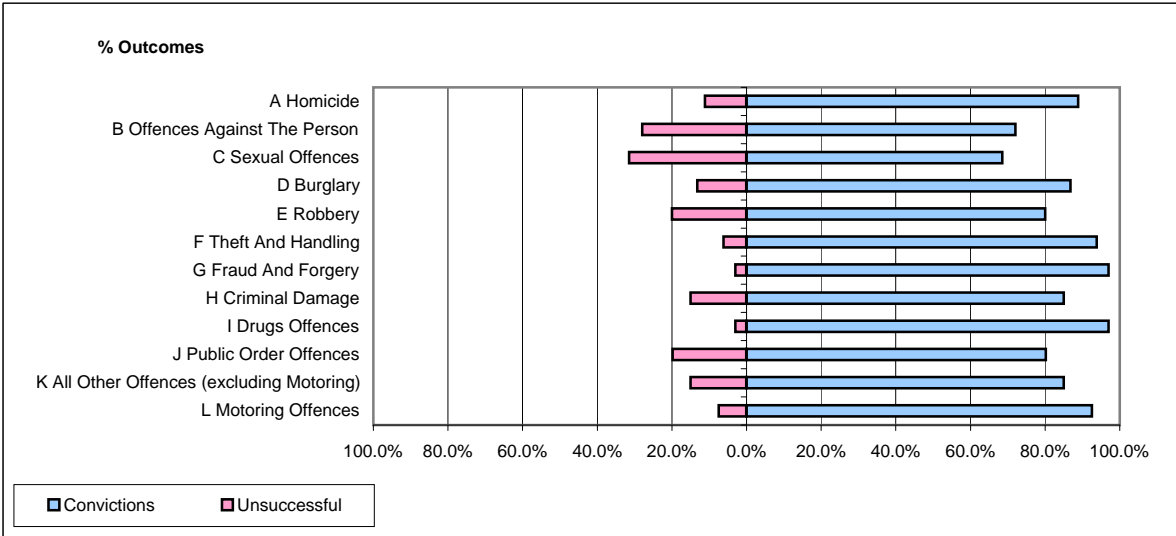


CPS OUTCOMES BY PRINCIPAL OFFENCE CATEGORY

May 2009

P41-WestMidlands



	Convictions		Unsuccessful	
	Number of Defendants	%	Number of Defendants	%
A Homicide	8	88.9%	1	11.1%
B Offences Against The Person	451	72.0%	175	28.0%
C Sexual Offences	37	68.5%	17	31.5%
D Burglary	112	86.8%	17	13.2%
E Robbery	72	80.0%	18	20.0%
F Theft And Handling	606	93.8%	40	6.2%
G Fraud And Forgery	32	97.0%	1	3.0%
H Criminal Damage	159	85.0%	28	15.0%
I Drugs Offences	287	97.0%	9	3.0%
J Public Order Offences	299	80.2%	74	19.8%
K All Other Offences (excluding Motoring)	181	85.0%	32	15.0%
L Motoring Offences	1,309	92.5%	106	7.5%
Admin Finalisations	0	0.0%	46	100.0%
TOTAL	3,553	86.3%	564	13.7%