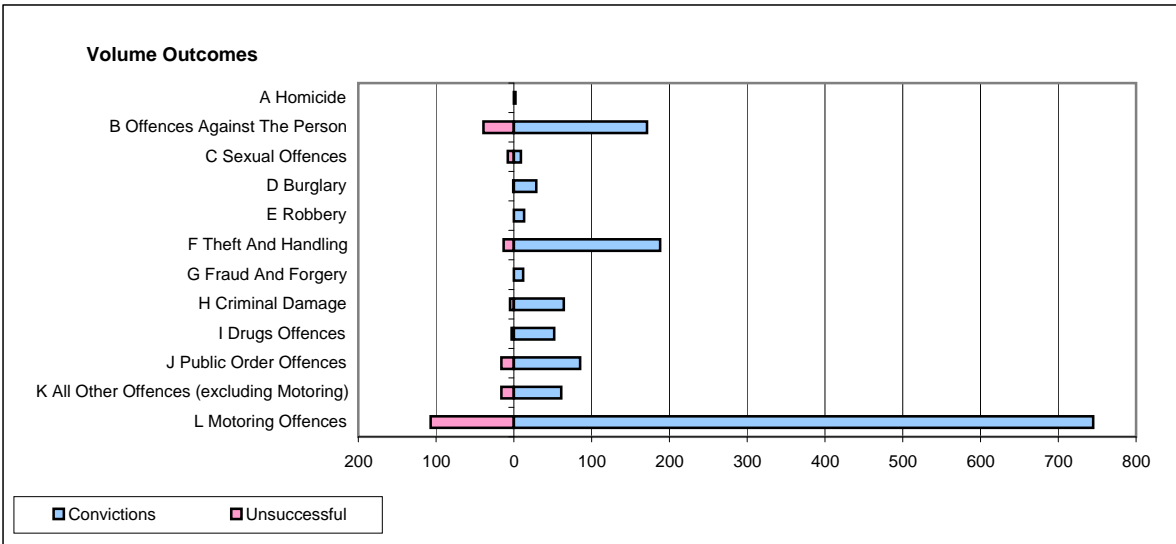
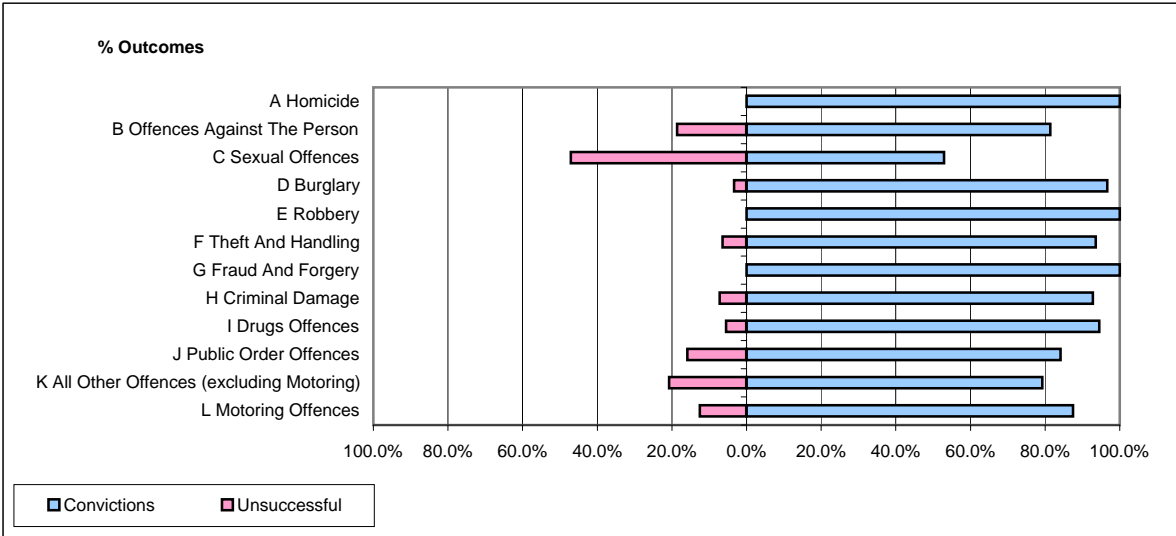


CPS OUTCOMES BY PRINCIPAL OFFENCE CATEGORY

May 2009

P40-WestMercia



	Convictions		Unsuccessful	
	Number of Defendants	%	Number of Defendants	%
A Homicide	2	100.0%	0	0.0%
B Offences Against The Person	171	81.4%	39	18.6%
C Sexual Offences	9	52.9%	8	47.1%
D Burglary	29	96.7%	1	3.3%
E Robbery	13	100.0%	0	0.0%
F Theft And Handling	188	93.5%	13	6.5%
G Fraud And Forgery	12	100.0%	0	0.0%
H Criminal Damage	64	92.8%	5	7.2%
I Drugs Offences	52	94.5%	3	5.5%
J Public Order Offences	85	84.2%	16	15.8%
K All Other Offences (excluding Motoring)	61	79.2%	16	20.8%
L Motoring Offences	745	87.4%	107	12.6%
Admin Finalisations	0	0.0%	9	100.0%
TOTAL	1,431	86.8%	217	13.2%