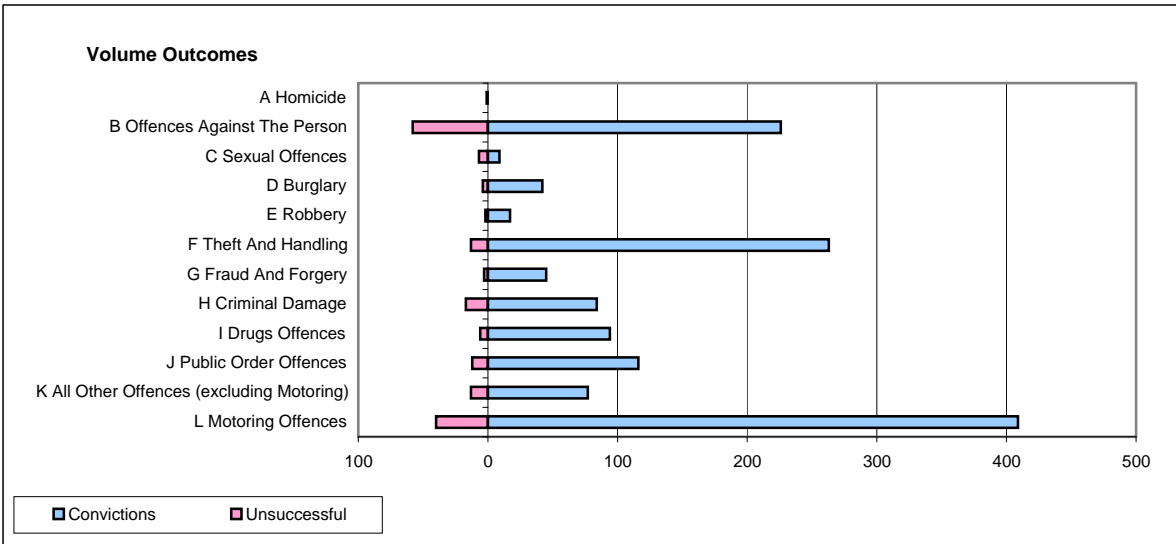
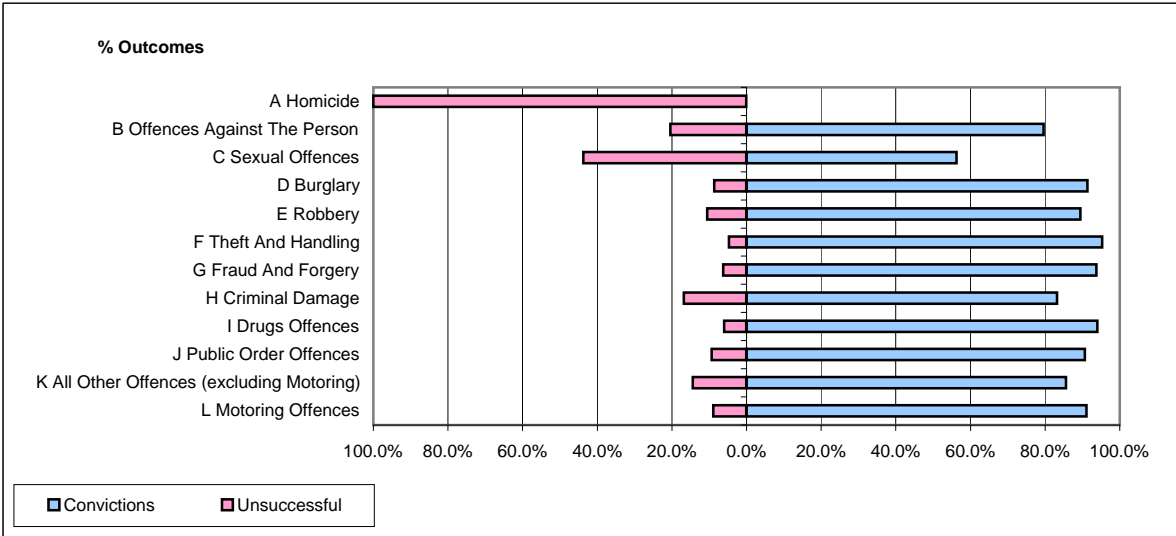


**CPS OUTCOMES BY PRINCIPAL OFFENCE CATEGORY**

**May 2009**

**P37-Sussex**



	Convictions		Unsuccessful	
	Number of Defendants	%	Number of Defendants	%
<b>A Homicide</b>	<b>0</b>	<b>0.0%</b>	<b>1</b>	<b>100.0%</b>
<b>B Offences Against The Person</b>	<b>226</b>	<b>79.6%</b>	<b>58</b>	<b>20.4%</b>
<b>C Sexual Offences</b>	<b>9</b>	<b>56.3%</b>	<b>7</b>	<b>43.8%</b>
<b>D Burglary</b>	<b>42</b>	<b>91.3%</b>	<b>4</b>	<b>8.7%</b>
<b>E Robbery</b>	<b>17</b>	<b>89.5%</b>	<b>2</b>	<b>10.5%</b>
<b>F Theft And Handling</b>	<b>263</b>	<b>95.3%</b>	<b>13</b>	<b>4.7%</b>
<b>G Fraud And Forgery</b>	<b>45</b>	<b>93.8%</b>	<b>3</b>	<b>6.3%</b>
<b>H Criminal Damage</b>	<b>84</b>	<b>83.2%</b>	<b>17</b>	<b>16.8%</b>
<b>I Drugs Offences</b>	<b>94</b>	<b>94.0%</b>	<b>6</b>	<b>6.0%</b>
<b>J Public Order Offences</b>	<b>116</b>	<b>90.6%</b>	<b>12</b>	<b>9.4%</b>
<b>K All Other Offences (excluding Motoring)</b>	<b>77</b>	<b>85.6%</b>	<b>13</b>	<b>14.4%</b>
<b>L Motoring Offences</b>	<b>409</b>	<b>91.1%</b>	<b>40</b>	<b>8.9%</b>
<b>Admin Finalisations</b>	<b>0</b>	<b>0.0%</b>	<b>36</b>	<b>100.0%</b>
<b>TOTAL</b>	<b>1,382</b>	<b>86.7%</b>	<b>212</b>	<b>13.3%</b>