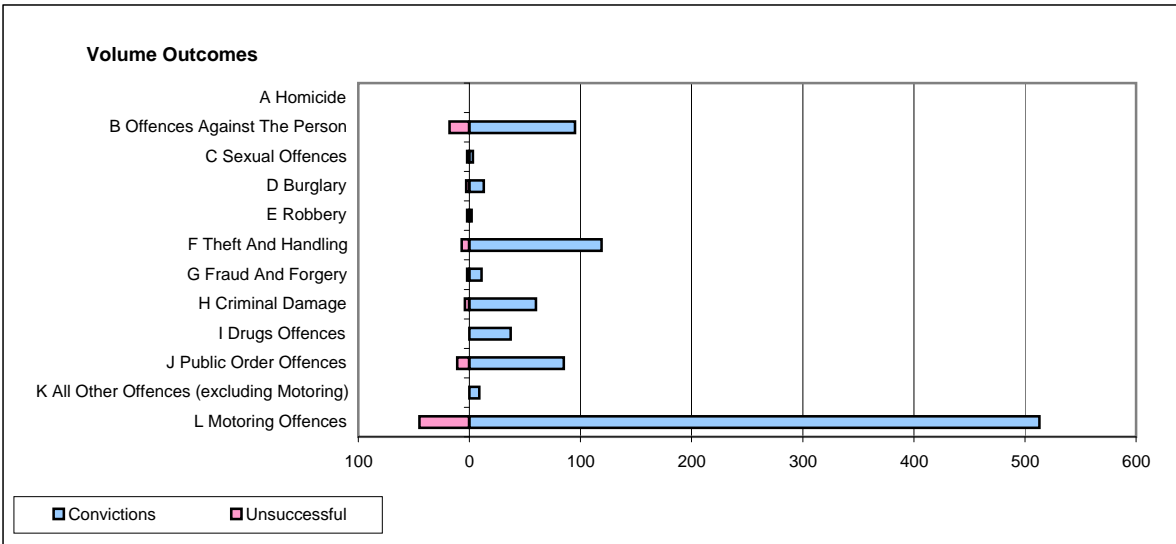
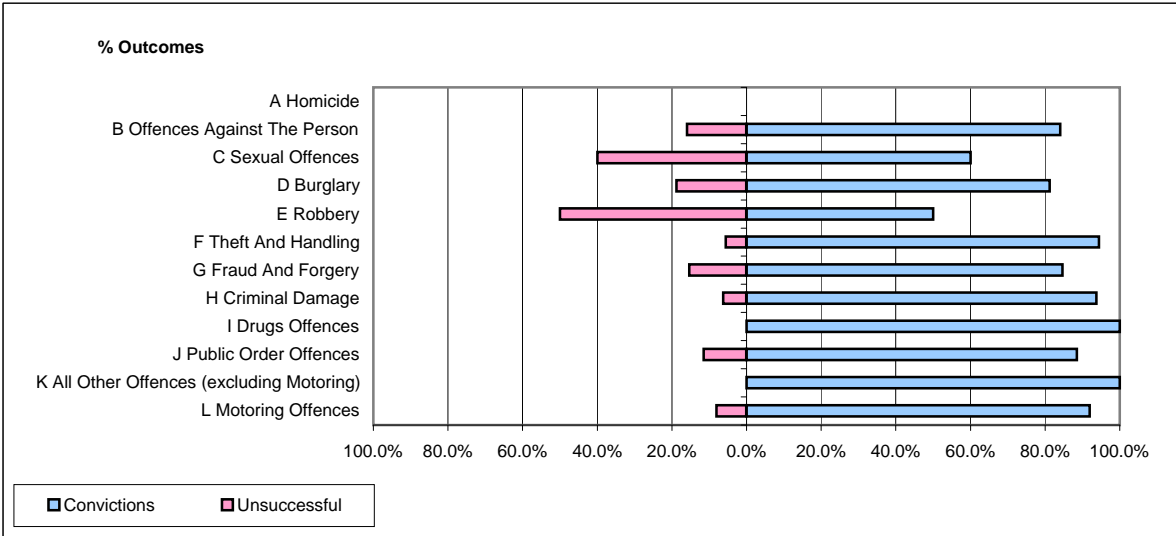


CPS OUTCOMES BY PRINCIPAL OFFENCE CATEGORY

May 2009

P35-Suffolk



	Convictions		Unsuccessful	
	Number of Defendants	%	Number of Defendants	%
A Homicide	0	0	0	0
B Offences Against The Person	95	84.1%	18	15.9%
C Sexual Offences	3	60.0%	2	40.0%
D Burglary	13	81.3%	3	18.8%
E Robbery	2	50.0%	2	50.0%
F Theft And Handling	119	94.4%	7	5.6%
G Fraud And Forgery	11	84.6%	2	15.4%
H Criminal Damage	60	93.8%	4	6.3%
I Drugs Offences	37	100.0%	0	0.0%
J Public Order Offences	85	88.5%	11	11.5%
K All Other Offences (excluding Motoring)	9	100.0%	0	0.0%
L Motoring Offences	513	91.9%	45	8.1%
Admin Finalisations	0	0.0%	14	100.0%
TOTAL	947	89.8%	108	10.2%