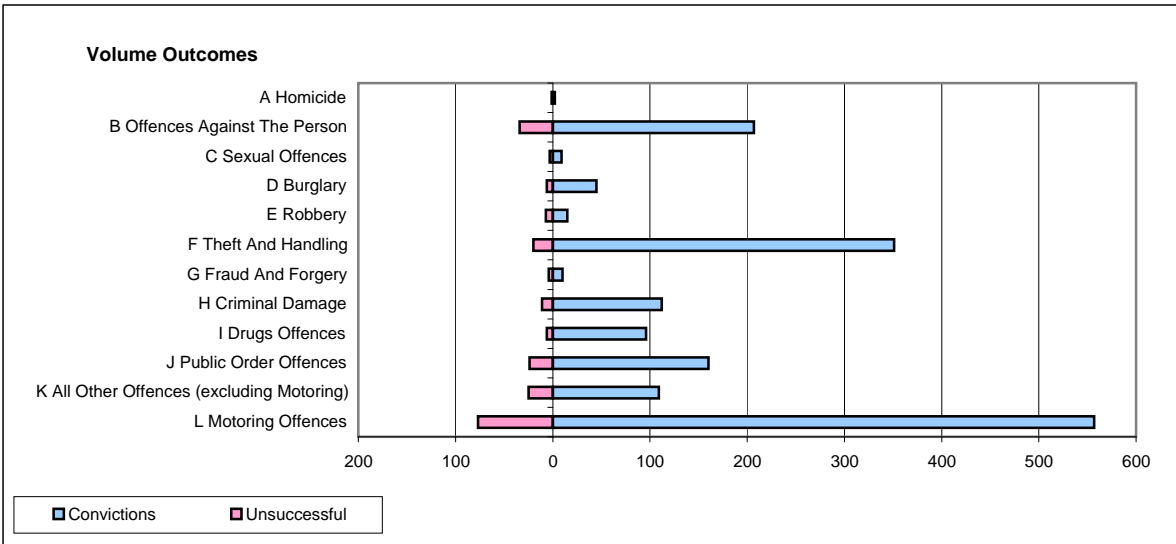
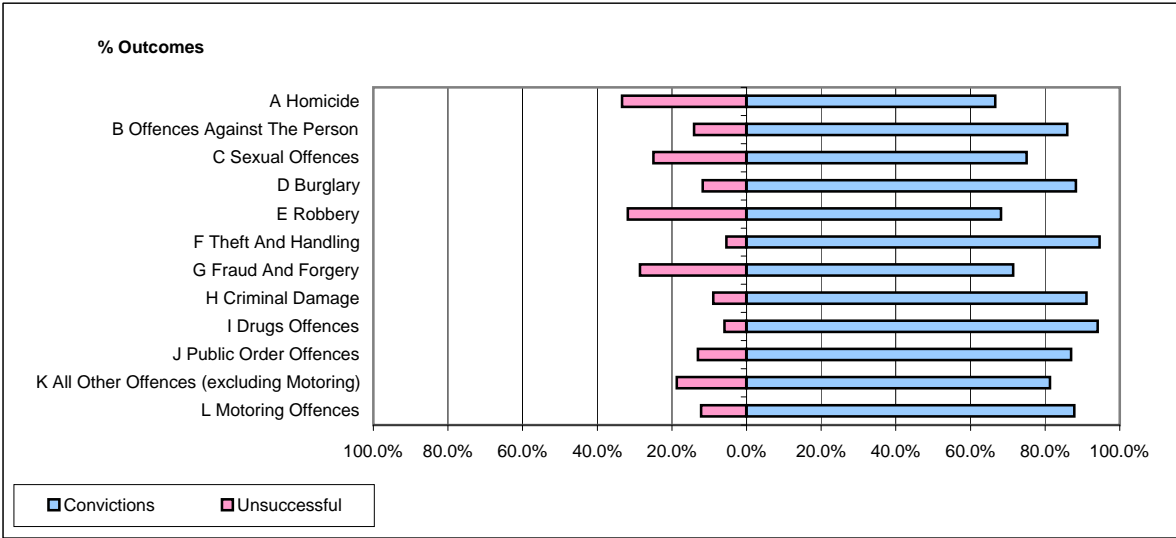


**CPS OUTCOMES BY PRINCIPAL OFFENCE CATEGORY**

**May 2009**

**P33-SouthYorkshire**



	Convictions		Unsuccessful	
	Number of Defendants	%	Number of Defendants	%
<b>A Homicide</b>	<b>2</b>	<b>66.7%</b>	<b>1</b>	<b>33.3%</b>
<b>B Offences Against The Person</b>	<b>207</b>	<b>85.9%</b>	<b>34</b>	<b>14.1%</b>
<b>C Sexual Offences</b>	<b>9</b>	<b>75.0%</b>	<b>3</b>	<b>25.0%</b>
<b>D Burglary</b>	<b>45</b>	<b>88.2%</b>	<b>6</b>	<b>11.8%</b>
<b>E Robbery</b>	<b>15</b>	<b>68.2%</b>	<b>7</b>	<b>31.8%</b>
<b>F Theft And Handling</b>	<b>351</b>	<b>94.6%</b>	<b>20</b>	<b>5.4%</b>
<b>G Fraud And Forgery</b>	<b>10</b>	<b>71.4%</b>	<b>4</b>	<b>28.6%</b>
<b>H Criminal Damage</b>	<b>112</b>	<b>91.1%</b>	<b>11</b>	<b>8.9%</b>
<b>I Drugs Offences</b>	<b>96</b>	<b>94.1%</b>	<b>6</b>	<b>5.9%</b>
<b>J Public Order Offences</b>	<b>160</b>	<b>87.0%</b>	<b>24</b>	<b>13.0%</b>
<b>K All Other Offences (excluding Motoring)</b>	<b>109</b>	<b>81.3%</b>	<b>25</b>	<b>18.7%</b>
<b>L Motoring Offences</b>	<b>557</b>	<b>87.9%</b>	<b>77</b>	<b>12.1%</b>
<b>Admin Finalisations</b>	<b>0</b>	<b>0.0%</b>	<b>12</b>	<b>100.0%</b>
<b>TOTAL</b>	<b>1,673</b>	<b>87.9%</b>	<b>230</b>	<b>12.1%</b>