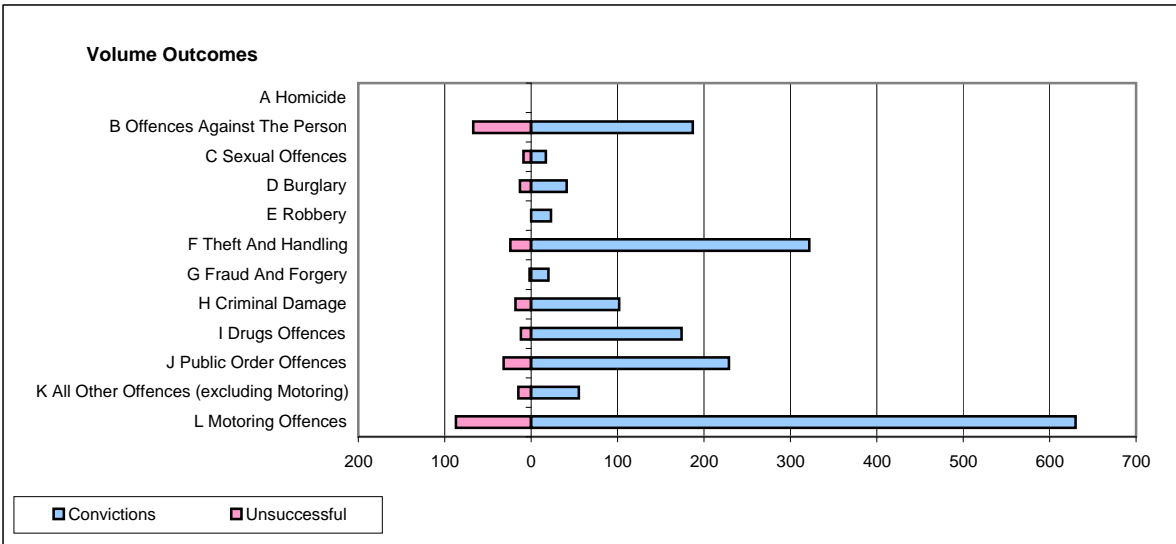
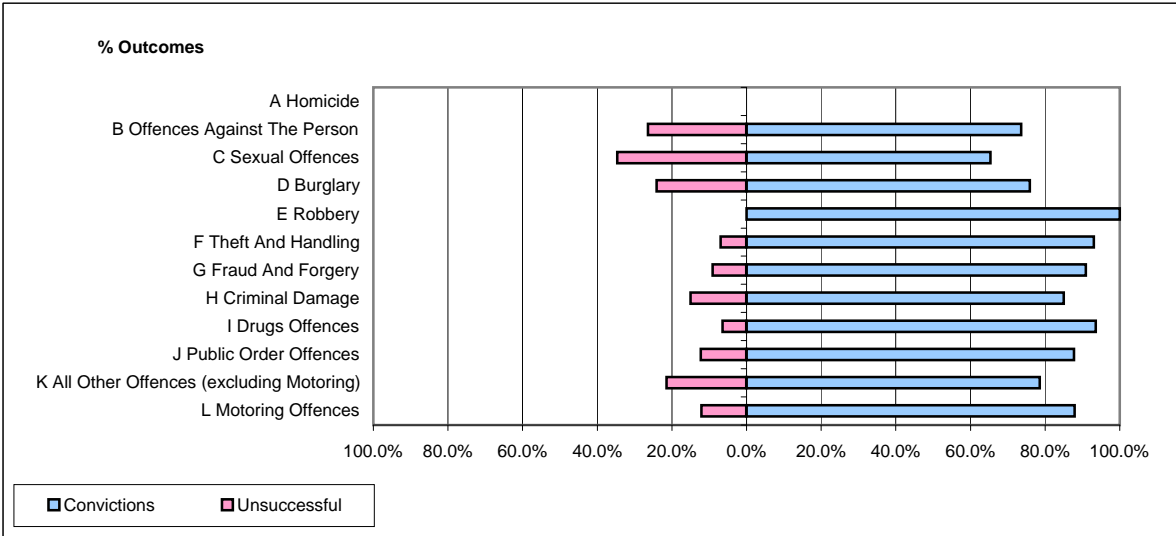


CPS OUTCOMES BY PRINCIPAL OFFENCE CATEGORY

May 2009

P32-SouthWales



	Convictions		Unsuccessful	
	Number of Defendants	%	Number of Defendants	%
A Homicide	0	0	0	0
B Offences Against The Person	187	73.6%	67	26.4%
C Sexual Offences	17	65.4%	9	34.6%
D Burglary	41	75.9%	13	24.1%
E Robbery	23	100.0%	0	0.0%
F Theft And Handling	322	93.1%	24	6.9%
G Fraud And Forgery	20	90.9%	2	9.1%
H Criminal Damage	102	85.0%	18	15.0%
I Drugs Offences	174	93.5%	12	6.5%
J Public Order Offences	229	87.7%	32	12.3%
K All Other Offences (excluding Motoring)	55	78.6%	15	21.4%
L Motoring Offences	630	87.9%	87	12.1%
Admin Finalisations	0	0.0%	36	100.0%
TOTAL	1,800	85.1%	315	14.9%