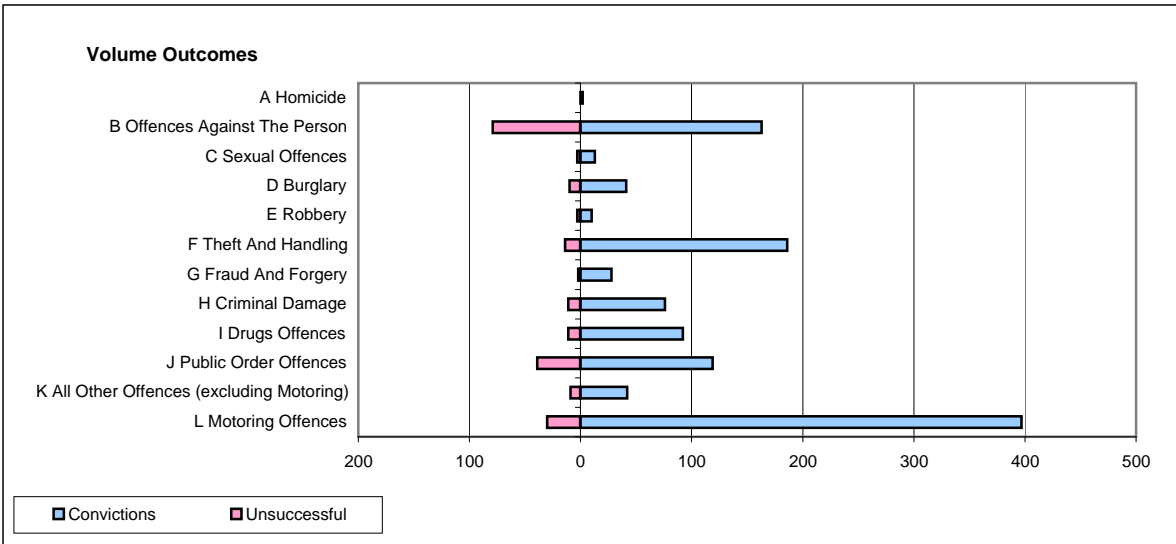
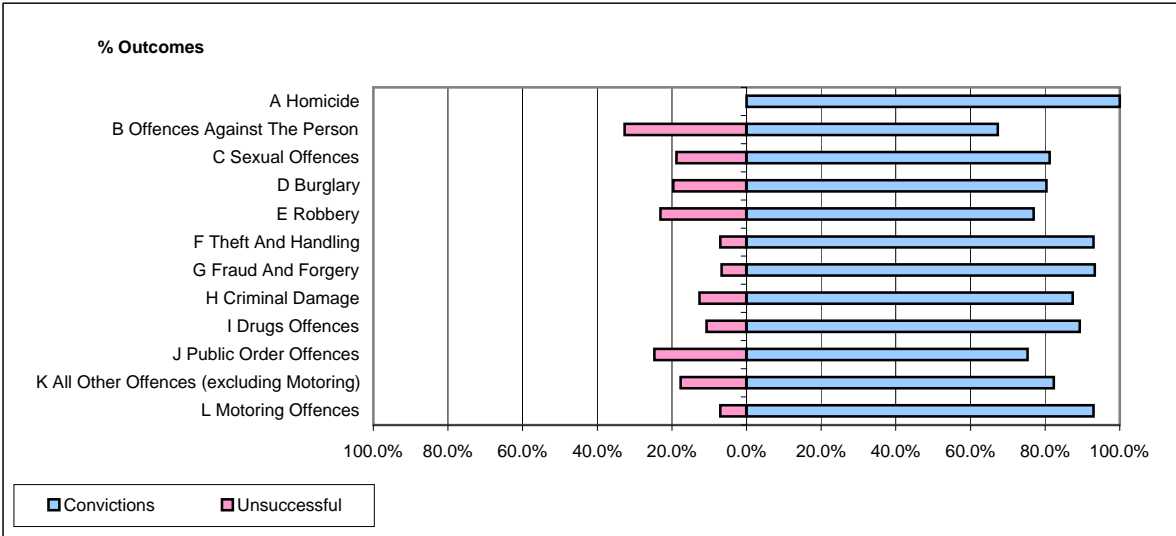


CPS OUTCOMES BY PRINCIPAL OFFENCE CATEGORY

May 2009

P31-Nottinghamshire



	Convictions		Unsuccessful	
	Number of Defendants	%	Number of Defendants	%
A Homicide	2	100.0%	0	0.0%
B Offences Against The Person	163	67.4%	79	32.6%
C Sexual Offences	13	81.3%	3	18.8%
D Burglary	41	80.4%	10	19.6%
E Robbery	10	76.9%	3	23.1%
F Theft And Handling	186	93.0%	14	7.0%
G Fraud And Forgery	28	93.3%	2	6.7%
H Criminal Damage	76	87.4%	11	12.6%
I Drugs Offences	92	89.3%	11	10.7%
J Public Order Offences	119	75.3%	39	24.7%
K All Other Offences (excluding Motoring)	42	82.4%	9	17.6%
L Motoring Offences	397	93.0%	30	7.0%
Admin Finalisations	0	0.0%	16	100.0%
TOTAL	1,169	83.7%	227	16.3%