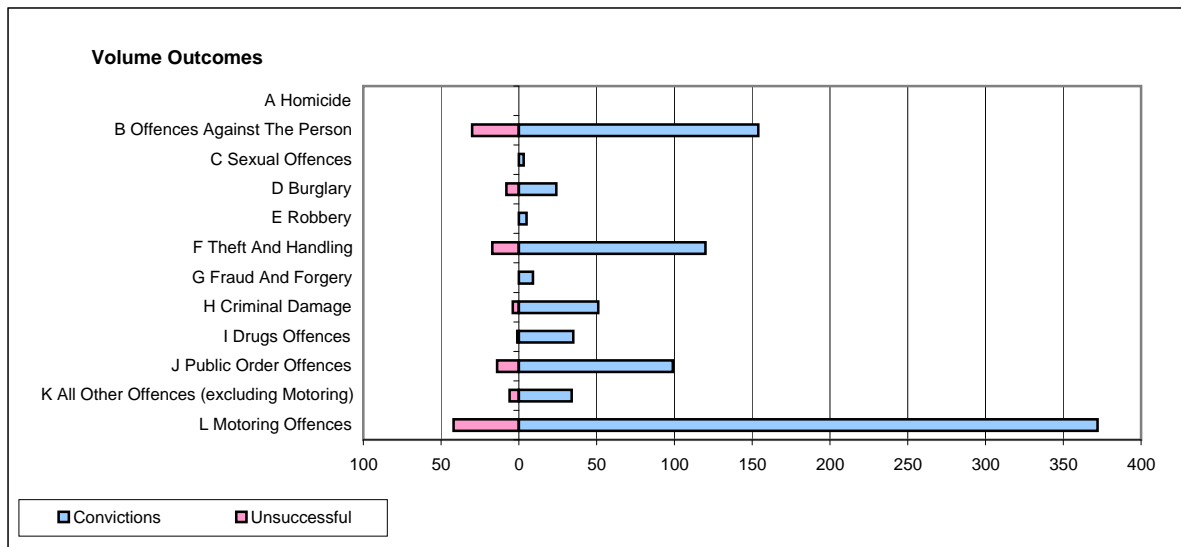
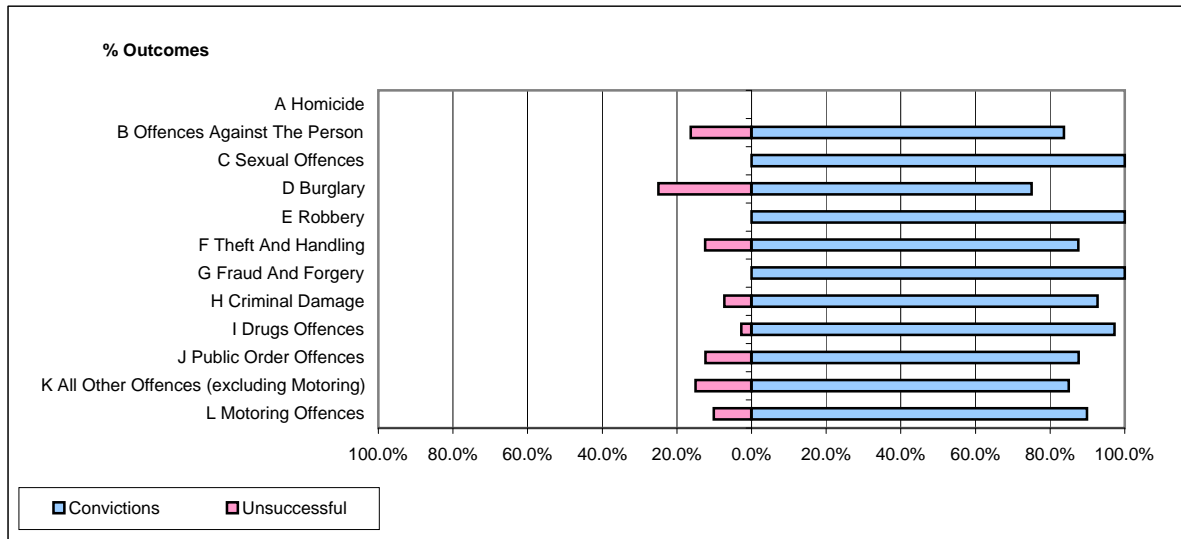


CPS OUTCOMES BY PRINCIPAL OFFENCE CATEGORY

May 2009

P29-NorthWales



	Convictions		Unsuccessful	
	Number of Defendants	%	Number of Defendants	%
A Homicide	0	0	0	0
B Offences Against The Person	154	83.7%	30	16.3%
C Sexual Offences	3	100.0%	0	0.0%
D Burglary	24	75.0%	8	25.0%
E Robbery	5	100.0%	0	0.0%
F Theft And Handling	120	87.6%	17	12.4%
G Fraud And Forgery	9	100.0%	0	0.0%
H Criminal Damage	51	92.7%	4	7.3%
I Drugs Offences	35	97.2%	1	2.8%
J Public Order Offences	99	87.6%	14	12.4%
K All Other Offences (excluding Motoring)	34	85.0%	6	15.0%
L Motoring Offences	372	89.9%	42	10.1%
Admin Finalisations	0	0.0%	8	100.0%
TOTAL	906	87.5%	130	12.5%