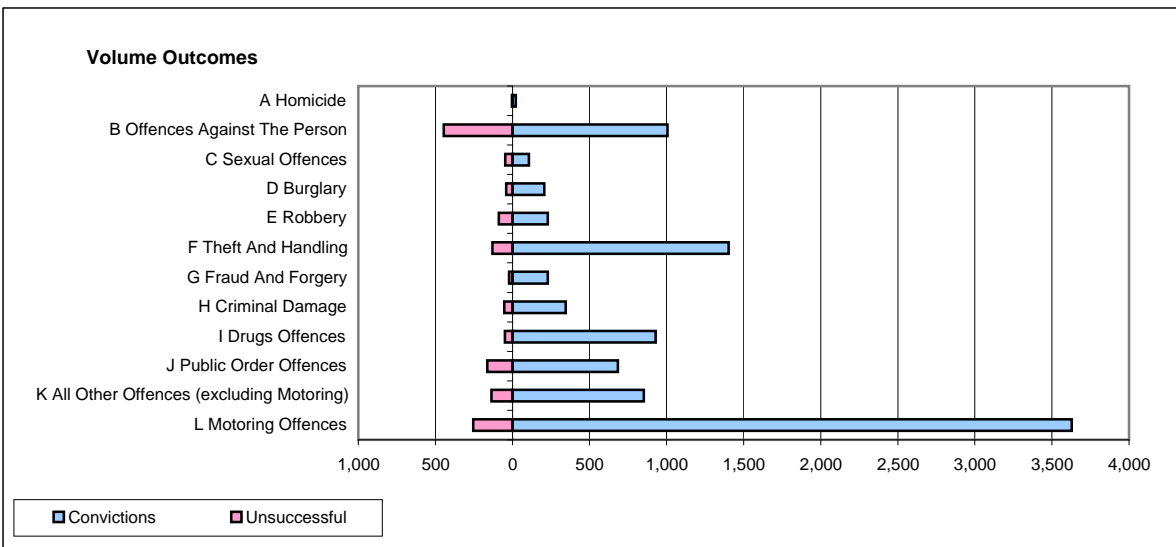
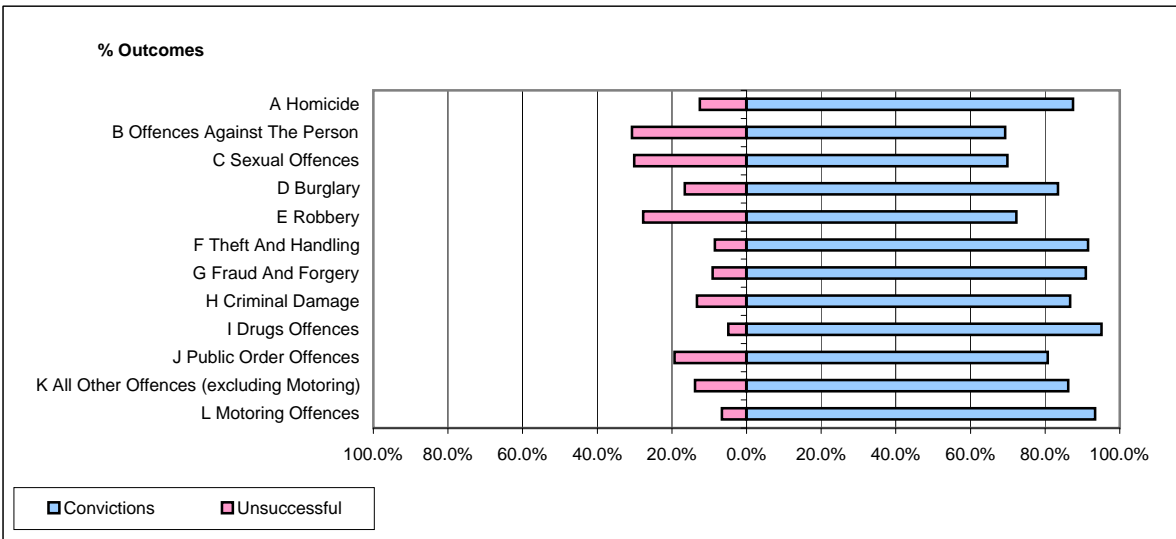


**CPS OUTCOMES BY PRINCIPAL OFFENCE CATEGORY**

**May 2009**

**P25-Metropolitan&City**



	Convictions		Unsuccessful	
	Number of Defendants	%	Number of Defendants	%
<b>A Homicide</b>	21	87.5%	3	12.5%
<b>B Offences Against The Person</b>	1,005	69.3%	445	30.7%
<b>C Sexual Offences</b>	107	69.9%	46	30.1%
<b>D Burglary</b>	207	83.5%	41	16.5%
<b>E Robbery</b>	230	72.3%	88	27.7%
<b>F Theft And Handling</b>	1,402	91.5%	130	8.5%
<b>G Fraud And Forgery</b>	230	90.9%	23	9.1%
<b>H Criminal Damage</b>	346	86.7%	53	13.3%
<b>I Drugs Offences</b>	928	95.1%	48	4.9%
<b>J Public Order Offences</b>	683	80.7%	163	19.3%
<b>K All Other Offences (excluding Motoring)</b>	852	86.2%	136	13.8%
<b>L Motoring Offences</b>	3,629	93.4%	255	6.6%
<b>Admin Finalisations</b>	0	0.0%	262	100.0%
<b>TOTAL</b>	9,640	85.1%	1,693	14.9%