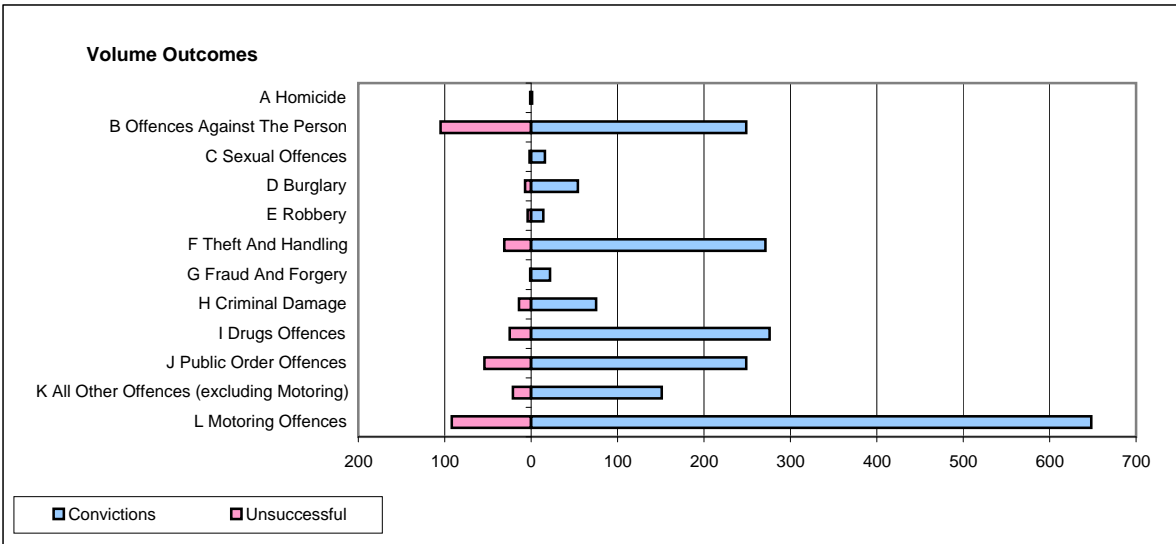
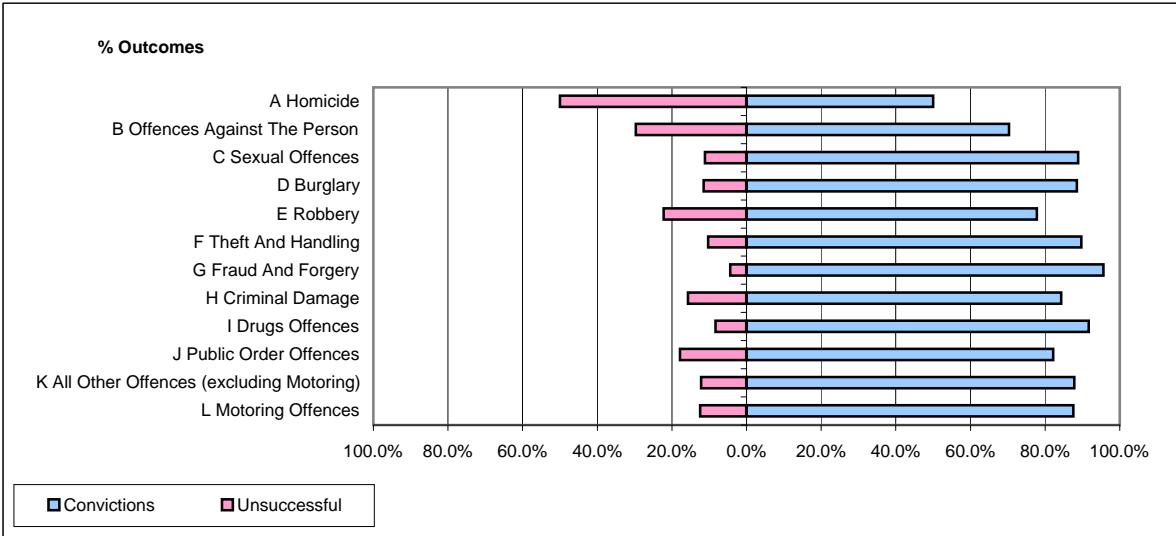


CPS OUTCOMES BY PRINCIPAL OFFENCE CATEGORY

May 2009

P24-Merseyside



	Convictions		Unsuccessful	
	Number of Defendants	%	Number of Defendants	%
A Homicide	1	50.0%	1	50.0%
B Offences Against The Person	249	70.3%	105	29.7%
C Sexual Offences	16	88.9%	2	11.1%
D Burglary	54	88.5%	7	11.5%
E Robbery	14	77.8%	4	22.2%
F Theft And Handling	271	89.7%	31	10.3%
G Fraud And Forgery	22	95.7%	1	4.3%
H Criminal Damage	75	84.3%	14	15.7%
I Drugs Offences	276	91.7%	25	8.3%
J Public Order Offences	249	82.2%	54	17.8%
K All Other Offences (excluding Motoring)	151	87.8%	21	12.2%
L Motoring Offences	648	87.6%	92	12.4%
Admin Finalisations	0	0.0%	32	100.0%
TOTAL	2,026	83.9%	389	16.1%