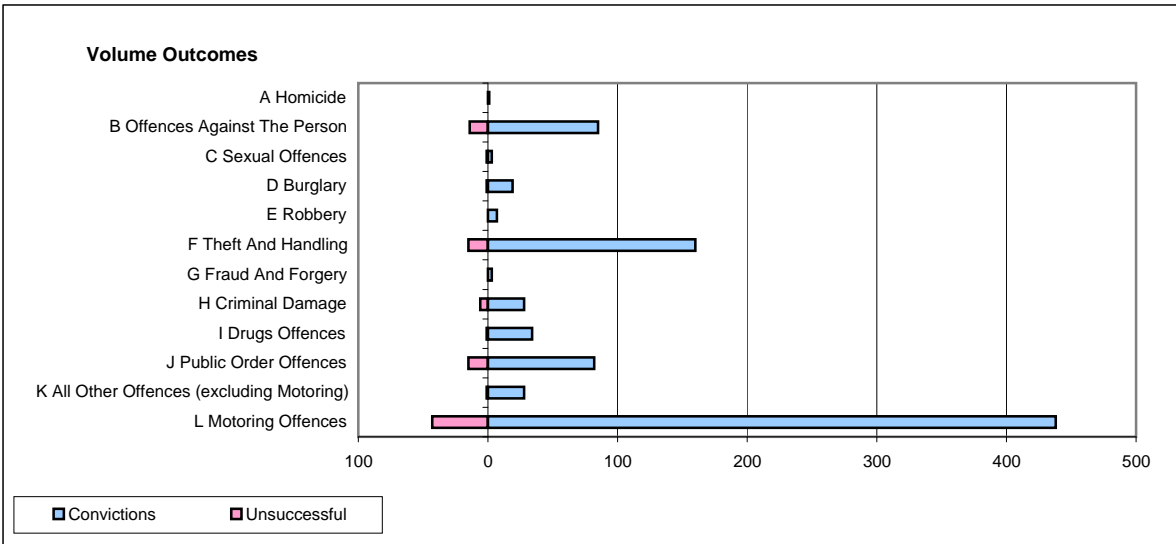
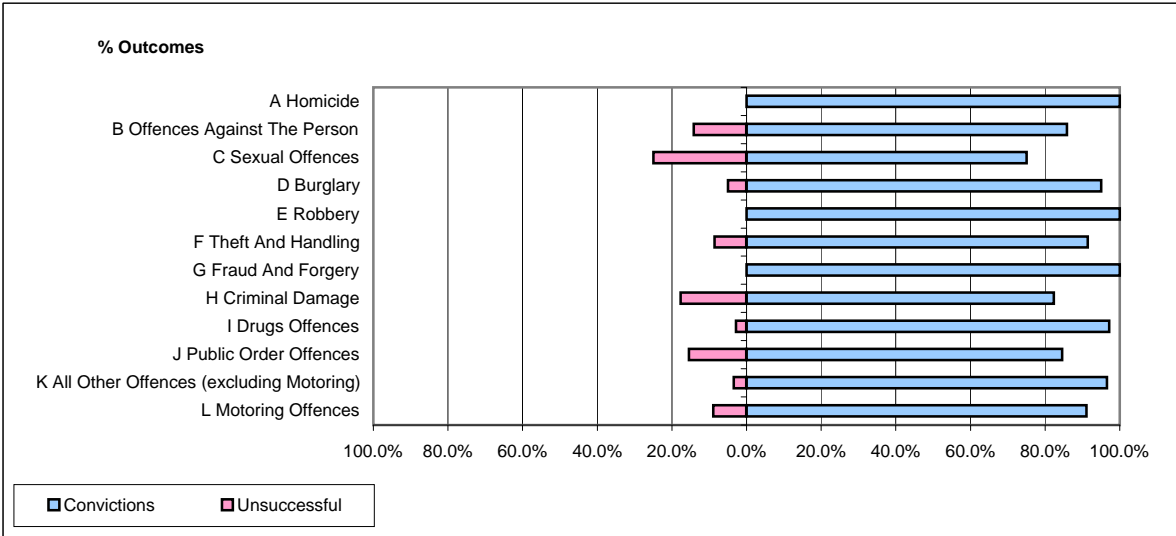


CPS OUTCOMES BY PRINCIPAL OFFENCE CATEGORY

May 2009

P23-Lincolnshire



	Convictions		Unsuccessful	
	Number of Defendants	%	Number of Defendants	%
A Homicide	1	100.0%	0	0.0%
B Offences Against The Person	85	85.9%	14	14.1%
C Sexual Offences	3	75.0%	1	25.0%
D Burglary	19	95.0%	1	5.0%
E Robbery	7	100.0%	0	0.0%
F Theft And Handling	160	91.4%	15	8.6%
G Fraud And Forgery	3	100.0%	0	0.0%
H Criminal Damage	28	82.4%	6	17.6%
I Drugs Offences	34	97.1%	1	2.9%
J Public Order Offences	82	84.5%	15	15.5%
K All Other Offences (excluding Motoring)	28	96.6%	1	3.4%
L Motoring Offences	438	91.1%	43	8.9%
Admin Finalisations	0	0.0%	7	100.0%
TOTAL	888	89.5%	104	10.5%