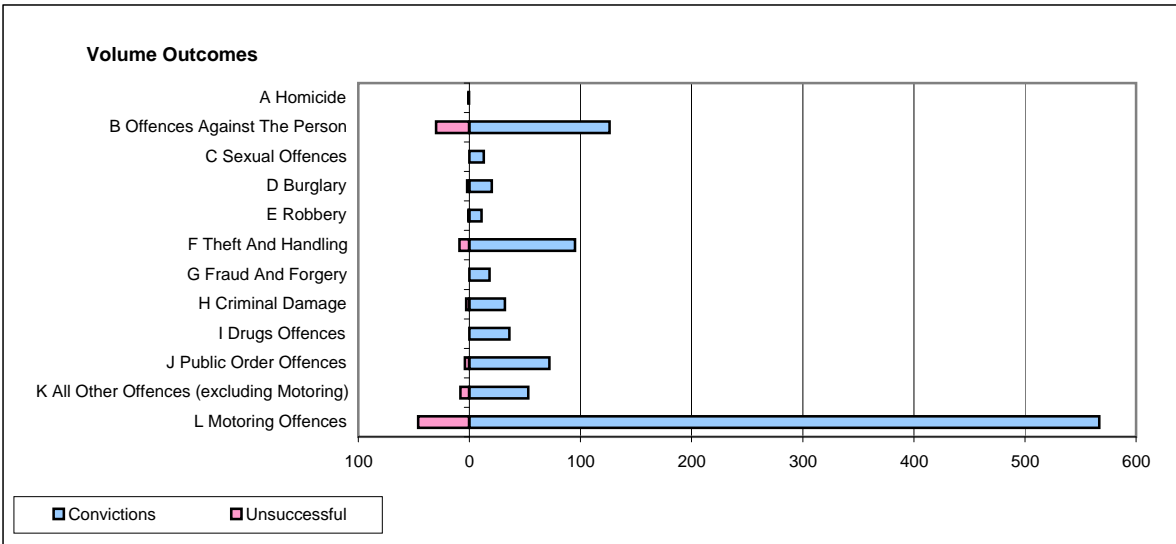
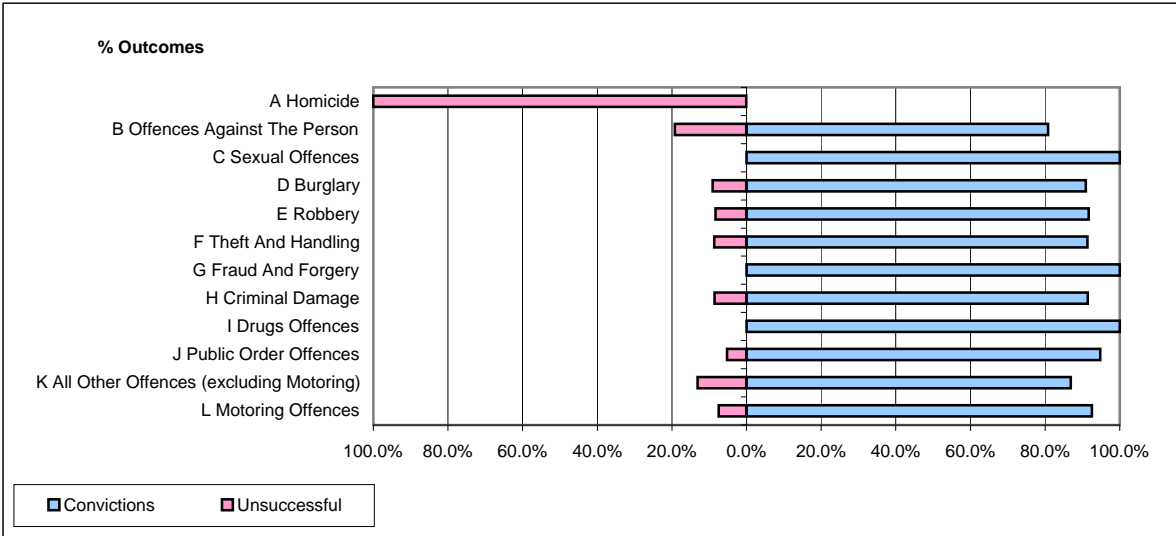


CPS OUTCOMES BY PRINCIPAL OFFENCE CATEGORY

May 2009

P22-Leicestershire



	Convictions		Unsuccessful	
	Number of Defendants	%	Number of Defendants	%
A Homicide	0	0.0%	1	100.0%
B Offences Against The Person	126	80.8%	30	19.2%
C Sexual Offences	13	100.0%	0	0.0%
D Burglary	20	90.9%	2	9.1%
E Robbery	11	91.7%	1	8.3%
F Theft And Handling	95	91.3%	9	8.7%
G Fraud And Forgery	18	100.0%	0	0.0%
H Criminal Damage	32	91.4%	3	8.6%
I Drugs Offences	36	100.0%	0	0.0%
J Public Order Offences	72	94.7%	4	5.3%
K All Other Offences (excluding Motoring)	53	86.9%	8	13.1%
L Motoring Offences	567	92.5%	46	7.5%
Admin Finalisations	0	0.0%	13	100.0%
TOTAL	1,043	89.9%	117	10.1%