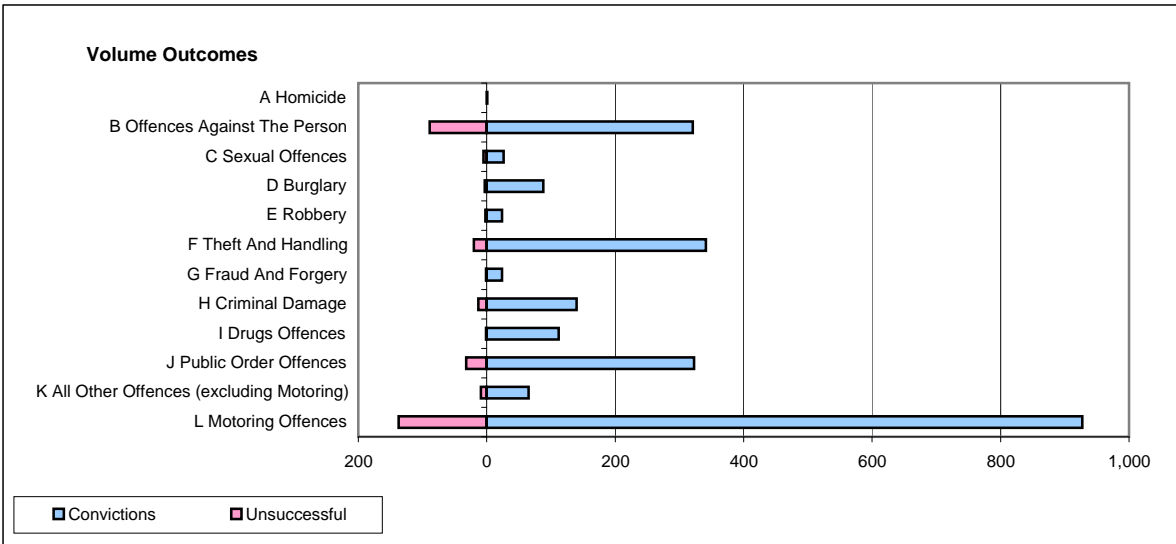
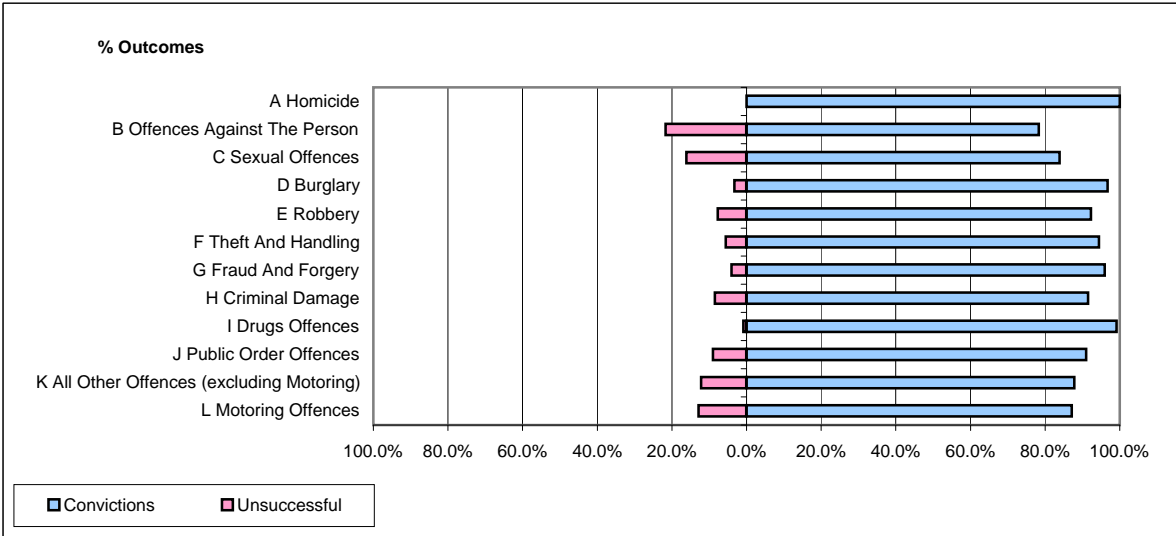


CPS OUTCOMES BY PRINCIPAL OFFENCE CATEGORY

May 2009

P21-Lancashire



	Convictions		Unsuccessful	
	Number of Defendants	%	Number of Defendants	%
A Homicide	1	100.0%	0	0.0%
B Offences Against The Person	321	78.3%	89	21.7%
C Sexual Offences	26	83.9%	5	16.1%
D Burglary	88	96.7%	3	3.3%
E Robbery	24	92.3%	2	7.7%
F Theft And Handling	341	94.5%	20	5.5%
G Fraud And Forgery	24	96.0%	1	4.0%
H Criminal Damage	140	91.5%	13	8.5%
I Drugs Offences	112	99.1%	1	0.9%
J Public Order Offences	323	91.0%	32	9.0%
K All Other Offences (excluding Motoring)	65	87.8%	9	12.2%
L Motoring Offences	927	87.1%	137	12.9%
Admin Finalisations	0	0.0%	36	100.0%
TOTAL	2,392	87.3%	348	12.7%