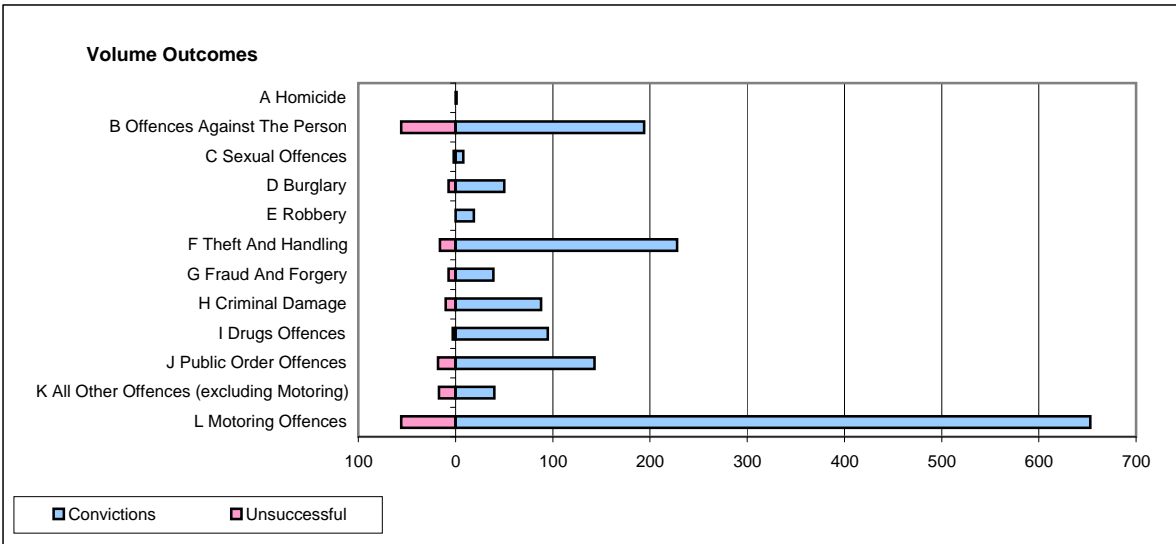
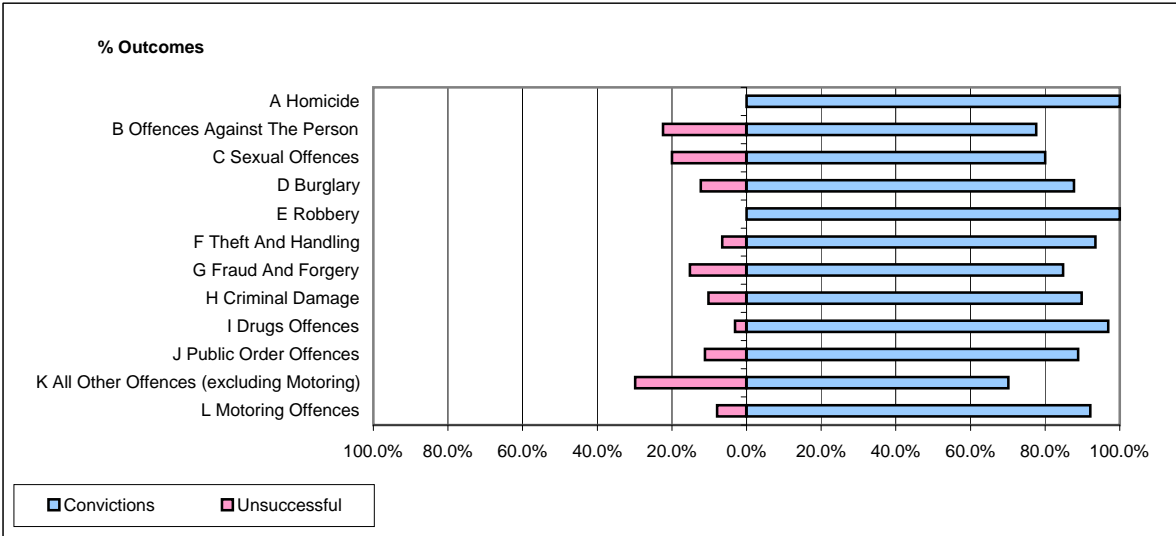


CPS OUTCOMES BY PRINCIPAL OFFENCE CATEGORY

May 2009

P20-Kent



	Convictions		Unsuccessful	
	Number of Defendants	%	Number of Defendants	%
A Homicide	1	100.0%	0	0.0%
B Offences Against The Person	194	77.6%	56	22.4%
C Sexual Offences	8	80.0%	2	20.0%
D Burglary	50	87.7%	7	12.3%
E Robbery	19	100.0%	0	0.0%
F Theft And Handling	228	93.4%	16	6.6%
G Fraud And Forgery	39	84.8%	7	15.2%
H Criminal Damage	88	89.8%	10	10.2%
I Drugs Offences	95	96.9%	3	3.1%
J Public Order Offences	143	88.8%	18	11.2%
K All Other Offences (excluding Motoring)	40	70.2%	17	29.8%
L Motoring Offences	653	92.1%	56	7.9%
Admin Finalisations	0	0.0%	19	100.0%
TOTAL	1,558	88.1%	211	11.9%