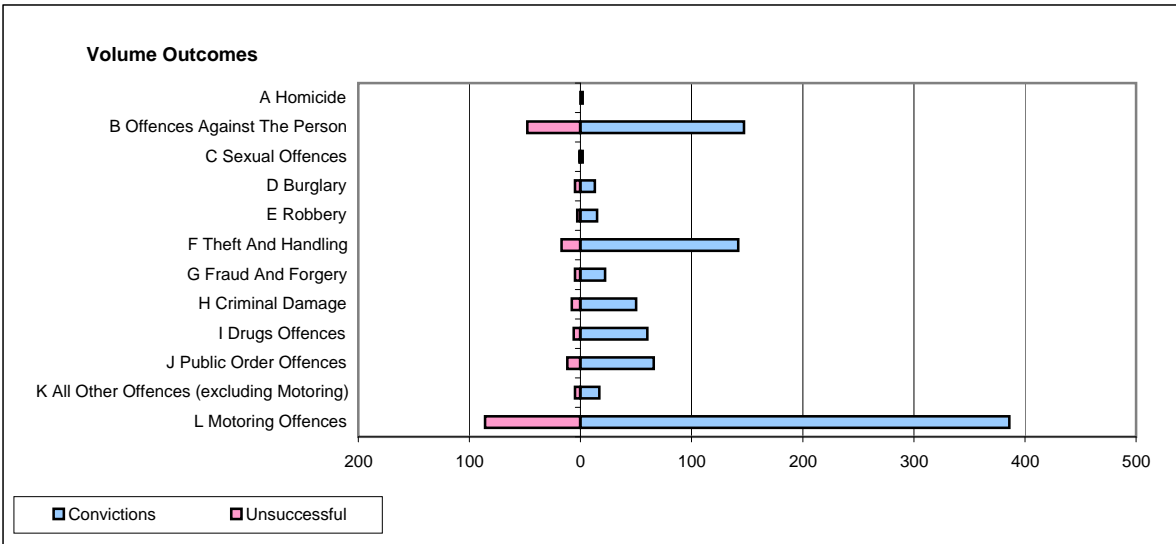
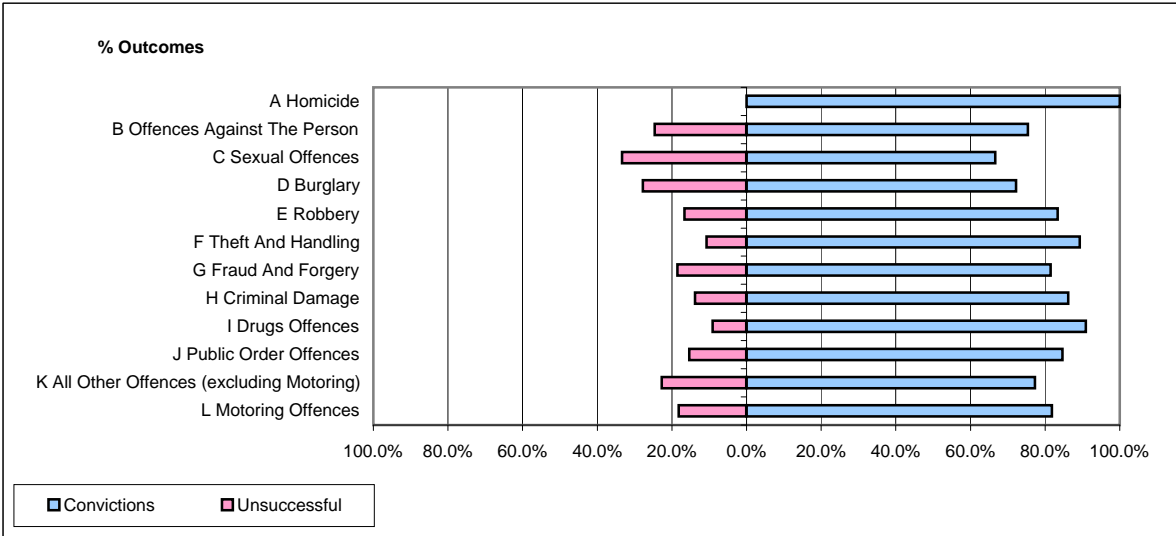


CPS OUTCOMES BY PRINCIPAL OFFENCE CATEGORY

May 2009

P18-Hertfordshire



	Convictions		Unsuccessful	
	Number of Defendants	%	Number of Defendants	%
A Homicide	2	100.0%	0	0.0%
B Offences Against The Person	147	75.4%	48	24.6%
C Sexual Offences	2	66.7%	1	33.3%
D Burglary	13	72.2%	5	27.8%
E Robbery	15	83.3%	3	16.7%
F Theft And Handling	142	89.3%	17	10.7%
G Fraud And Forgery	22	81.5%	5	18.5%
H Criminal Damage	50	86.2%	8	13.8%
I Drugs Offences	60	90.9%	6	9.1%
J Public Order Offences	66	84.6%	12	15.4%
K All Other Offences (excluding Motoring)	17	77.3%	5	22.7%
L Motoring Offences	386	81.8%	86	18.2%
Admin Finalisations	0	0.0%	11	100.0%
TOTAL	922	81.7%	207	18.3%