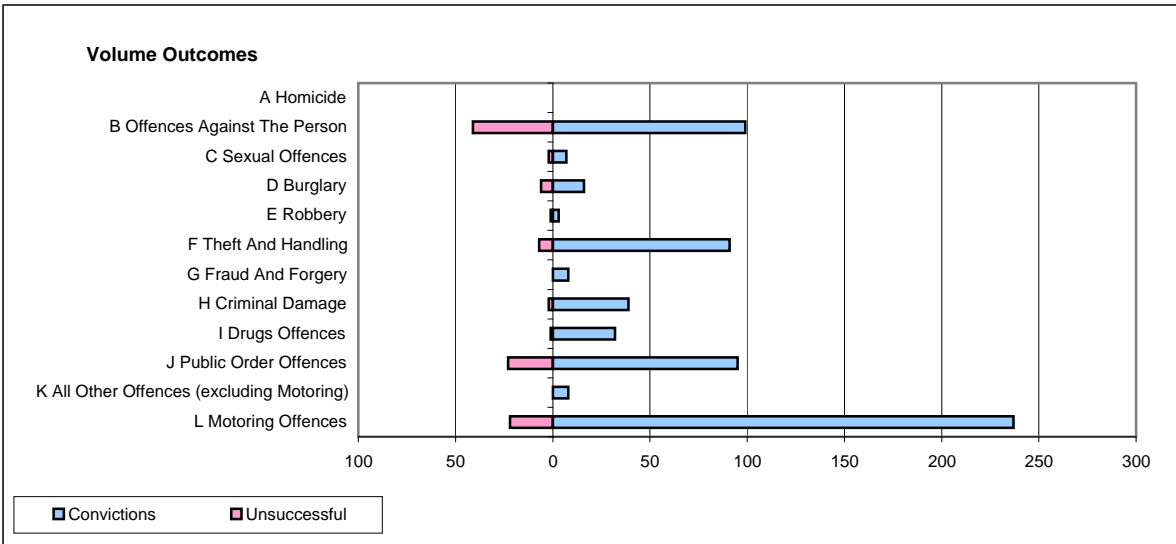
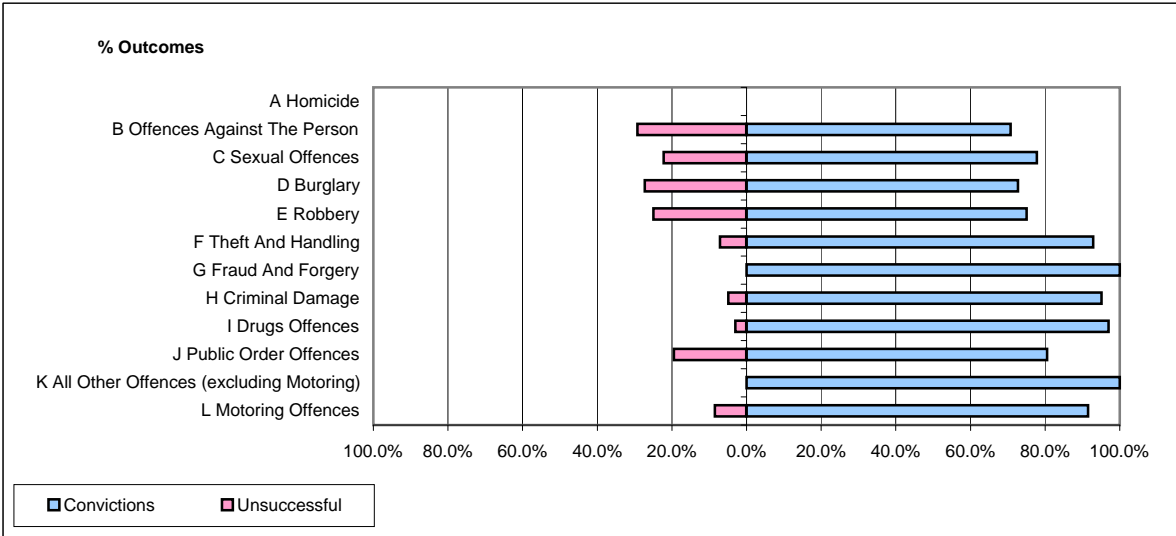


**CPS OUTCOMES BY PRINCIPAL OFFENCE CATEGORY**

**May 2009**

**P16-Gwent**



	Convictions		Unsuccessful	
	Number of Defendants	%	Number of Defendants	%
<b>A Homicide</b>	<b>0</b>	<b>0</b>	<b>0</b>	<b>0</b>
<b>B Offences Against The Person</b>	<b>99</b>	<b>70.7%</b>	<b>41</b>	<b>29.3%</b>
<b>C Sexual Offences</b>	<b>7</b>	<b>77.8%</b>	<b>2</b>	<b>22.2%</b>
<b>D Burglary</b>	<b>16</b>	<b>72.7%</b>	<b>6</b>	<b>27.3%</b>
<b>E Robbery</b>	<b>3</b>	<b>75.0%</b>	<b>1</b>	<b>25.0%</b>
<b>F Theft And Handling</b>	<b>91</b>	<b>92.9%</b>	<b>7</b>	<b>7.1%</b>
<b>G Fraud And Forgery</b>	<b>8</b>	<b>100.0%</b>	<b>0</b>	<b>0.0%</b>
<b>H Criminal Damage</b>	<b>39</b>	<b>95.1%</b>	<b>2</b>	<b>4.9%</b>
<b>I Drugs Offences</b>	<b>32</b>	<b>97.0%</b>	<b>1</b>	<b>3.0%</b>
<b>J Public Order Offences</b>	<b>95</b>	<b>80.5%</b>	<b>23</b>	<b>19.5%</b>
<b>K All Other Offences (excluding Motoring)</b>	<b>8</b>	<b>100.0%</b>	<b>0</b>	<b>0.0%</b>
<b>L Motoring Offences</b>	<b>237</b>	<b>91.5%</b>	<b>22</b>	<b>8.5%</b>
<b>Admin Finalisations</b>	<b>0</b>	<b>0.0%</b>	<b>3</b>	<b>100.0%</b>
<b>TOTAL</b>	<b>635</b>	<b>85.5%</b>	<b>108</b>	<b>14.5%</b>