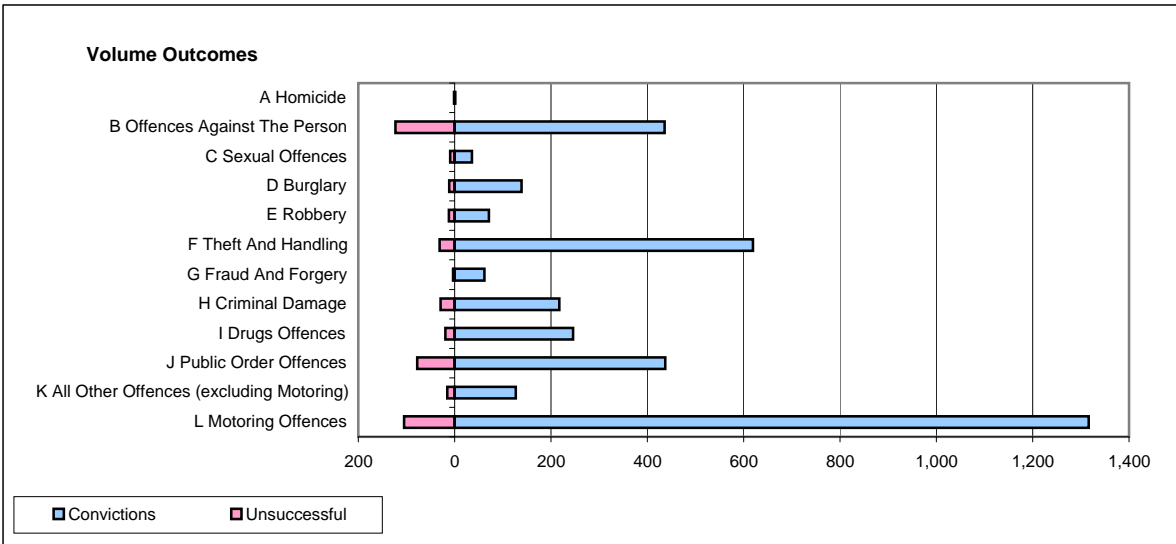
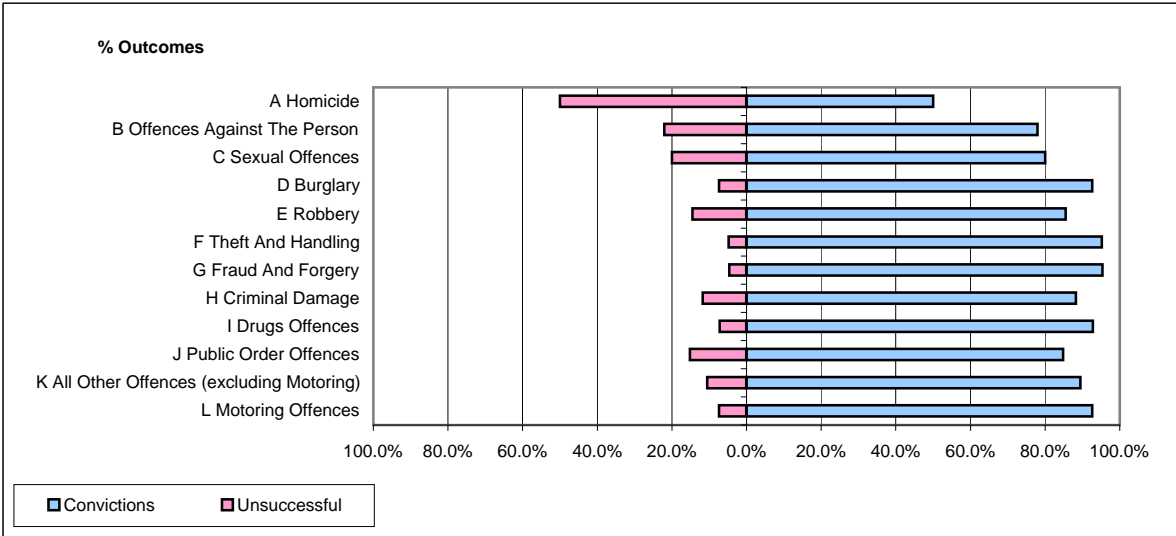


CPS OUTCOMES BY PRINCIPAL OFFENCE CATEGORY

May 2009

P15-GreaterManchester



	Convictions		Unsuccessful	
	Number of Defendants	%	Number of Defendants	%
A Homicide	1	50.0%	1	50.0%
B Offences Against The Person	436	78.0%	123	22.0%
C Sexual Offences	36	80.0%	9	20.0%
D Burglary	139	92.7%	11	7.3%
E Robbery	71	85.5%	12	14.5%
F Theft And Handling	619	95.2%	31	4.8%
G Fraud And Forgery	62	95.4%	3	4.6%
H Criminal Damage	217	88.2%	29	11.8%
I Drugs Offences	246	92.8%	19	7.2%
J Public Order Offences	437	84.9%	78	15.1%
K All Other Offences (excluding Motoring)	127	89.4%	15	10.6%
L Motoring Offences	1,316	92.6%	105	7.4%
Admin Finalisations	0	0.0%	64	100.0%
TOTAL	3,707	88.1%	500	11.9%