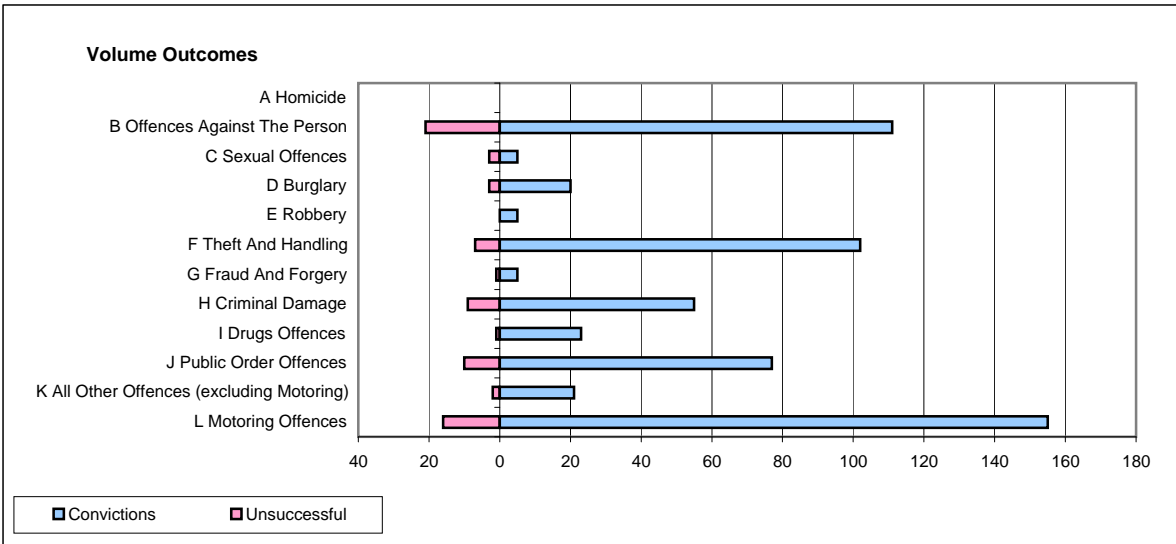
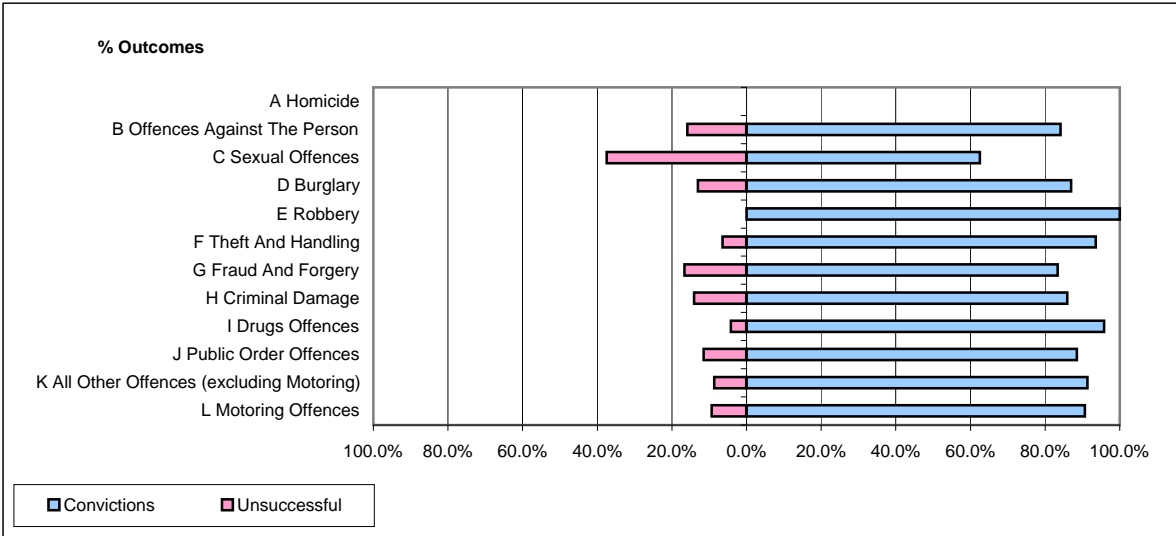


**CPS OUTCOMES BY PRINCIPAL OFFENCE CATEGORY**

**May 2009**

**P11-Durham**



	Convictions		Unsuccessful	
	Number of Defendants	%	Number of Defendants	%
<b>A Homicide</b>	<b>0</b>	<b>0</b>	<b>0</b>	<b>0</b>
<b>B Offences Against The Person</b>	<b>111</b>	<b>84.1%</b>	<b>21</b>	<b>15.9%</b>
<b>C Sexual Offences</b>	<b>5</b>	<b>62.5%</b>	<b>3</b>	<b>37.5%</b>
<b>D Burglary</b>	<b>20</b>	<b>87.0%</b>	<b>3</b>	<b>13.0%</b>
<b>E Robbery</b>	<b>5</b>	<b>100.0%</b>	<b>0</b>	<b>0.0%</b>
<b>F Theft And Handling</b>	<b>102</b>	<b>93.6%</b>	<b>7</b>	<b>6.4%</b>
<b>G Fraud And Forgery</b>	<b>5</b>	<b>83.3%</b>	<b>1</b>	<b>16.7%</b>
<b>H Criminal Damage</b>	<b>55</b>	<b>85.9%</b>	<b>9</b>	<b>14.1%</b>
<b>I Drugs Offences</b>	<b>23</b>	<b>95.8%</b>	<b>1</b>	<b>4.2%</b>
<b>J Public Order Offences</b>	<b>77</b>	<b>88.5%</b>	<b>10</b>	<b>11.5%</b>
<b>K All Other Offences (excluding Motoring)</b>	<b>21</b>	<b>91.3%</b>	<b>2</b>	<b>8.7%</b>
<b>L Motoring Offences</b>	<b>155</b>	<b>90.6%</b>	<b>16</b>	<b>9.4%</b>
<b>Admin Finalisations</b>	<b>0</b>	<b>0.0%</b>	<b>7</b>	<b>100.0%</b>
<b>TOTAL</b>	<b>579</b>	<b>87.9%</b>	<b>80</b>	<b>12.1%</b>