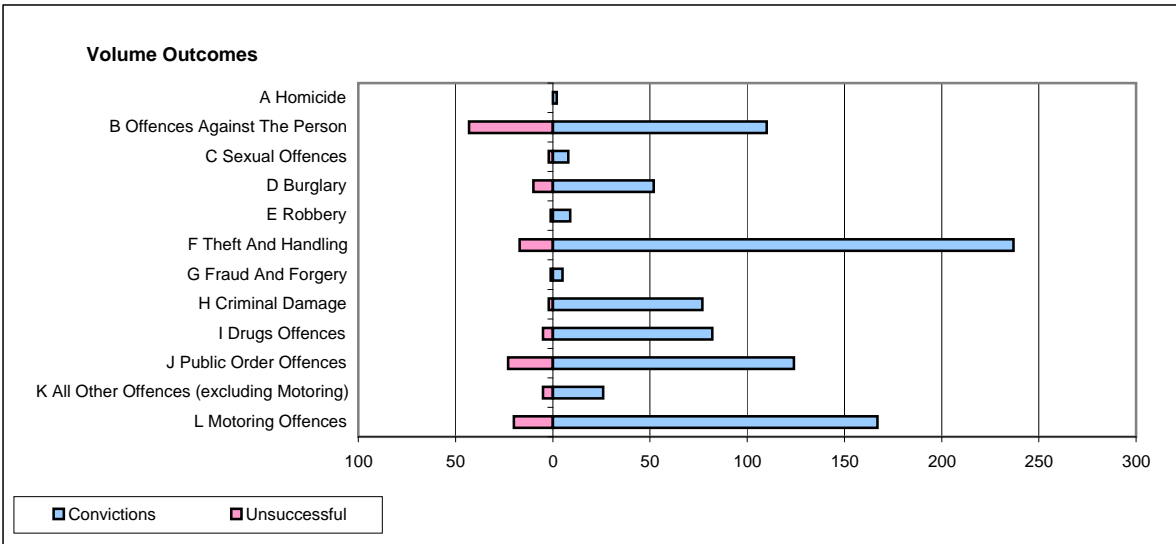
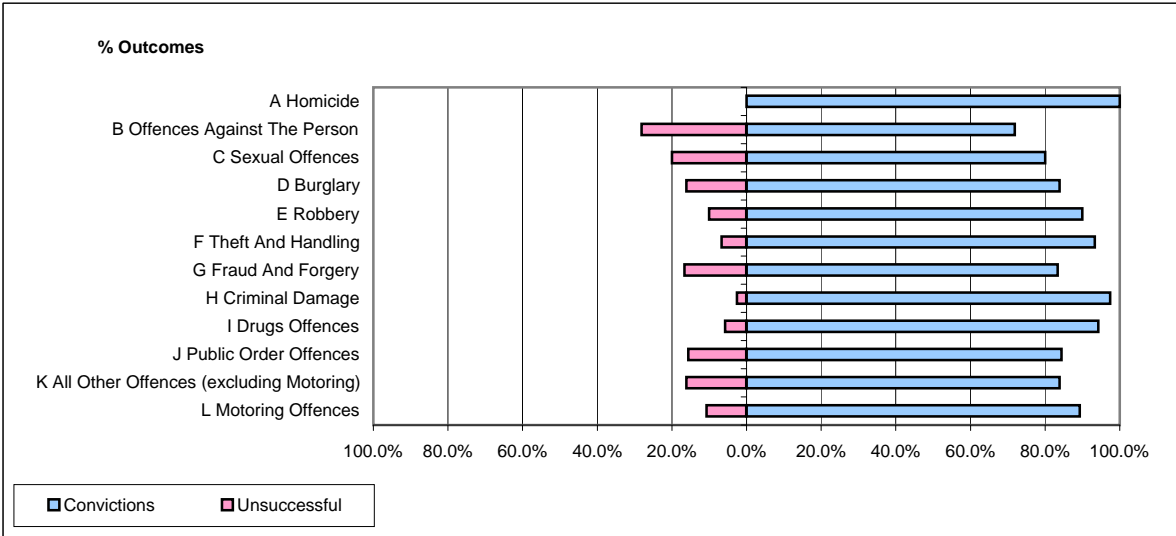


CPS OUTCOMES BY PRINCIPAL OFFENCE CATEGORY

May 2009

P06-Cleveland



	Convictions		Unsuccessful	
	Number of Defendants	%	Number of Defendants	%
A Homicide	2	100.0%	0	0.0%
B Offences Against The Person	110	71.9%	43	28.1%
C Sexual Offences	8	80.0%	2	20.0%
D Burglary	52	83.9%	10	16.1%
E Robbery	9	90.0%	1	10.0%
F Theft And Handling	237	93.3%	17	6.7%
G Fraud And Forgery	5	83.3%	1	16.7%
H Criminal Damage	77	97.5%	2	2.5%
I Drugs Offences	82	94.3%	5	5.7%
J Public Order Offences	124	84.4%	23	15.6%
K All Other Offences (excluding Motoring)	26	83.9%	5	16.1%
L Motoring Offences	167	89.3%	20	10.7%
Admin Finalisations	0	0.0%	6	100.0%
TOTAL	899	86.9%	135	13.1%