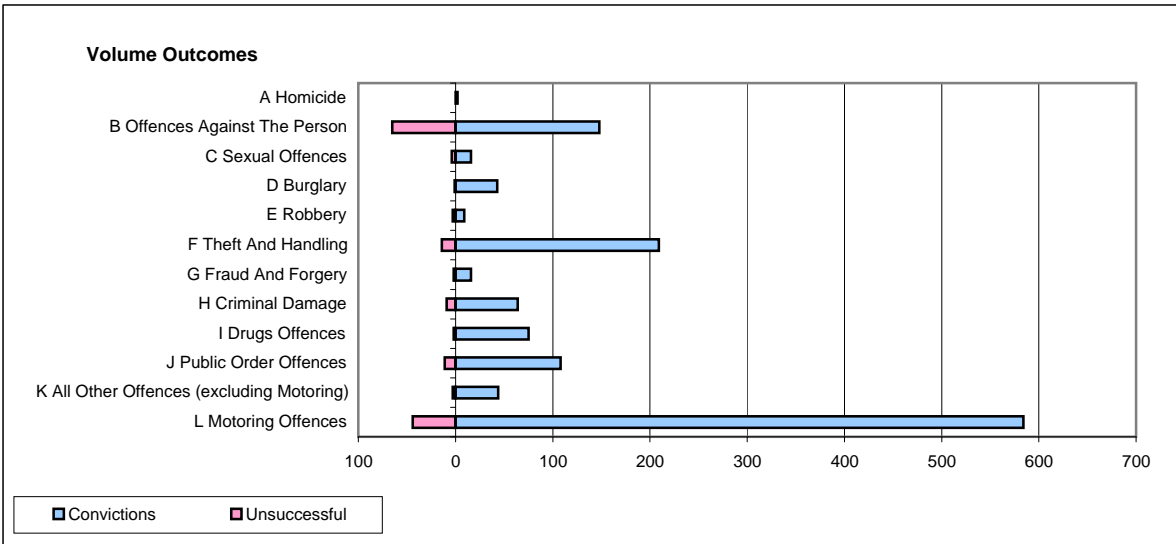
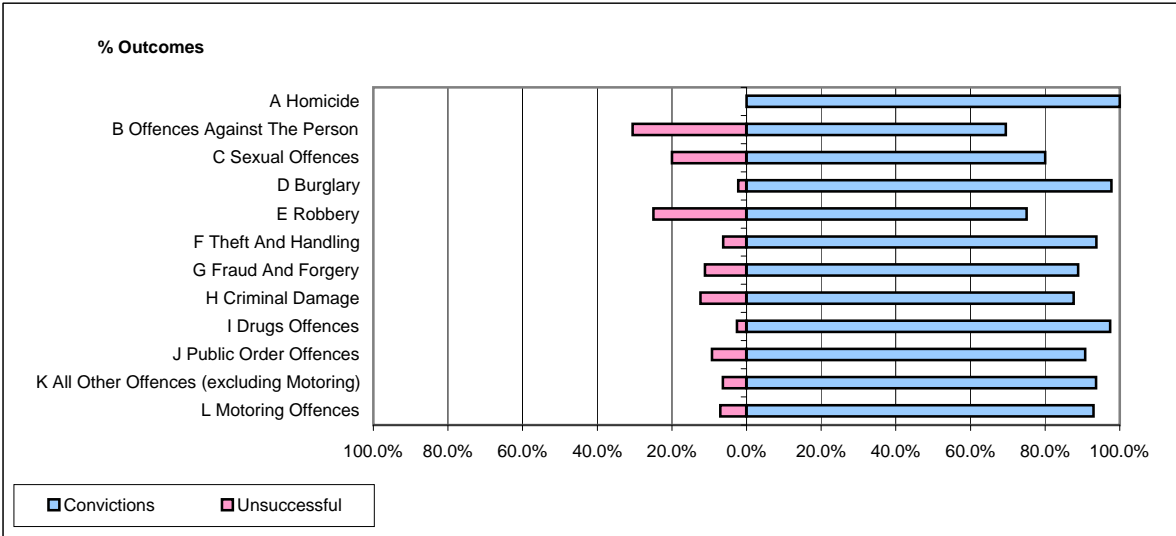


CPS OUTCOMES BY PRINCIPAL OFFENCE CATEGORY

May 2009

P04-Cheshire



	Convictions		Unsuccessful	
	Number of Defendants	%	Number of Defendants	%
A Homicide	2	100.0%	0	0.0%
B Offences Against The Person	148	69.5%	65	30.5%
C Sexual Offences	16	80.0%	4	20.0%
D Burglary	43	97.7%	1	2.3%
E Robbery	9	75.0%	3	25.0%
F Theft And Handling	209	93.7%	14	6.3%
G Fraud And Forgery	16	88.9%	2	11.1%
H Criminal Damage	64	87.7%	9	12.3%
I Drugs Offences	75	97.4%	2	2.6%
J Public Order Offences	108	90.8%	11	9.2%
K All Other Offences (excluding Motoring)	44	93.6%	3	6.4%
L Motoring Offences	584	93.0%	44	7.0%
Admin Finalisations	0	0.0%	12	100.0%
TOTAL	1,318	88.6%	170	11.4%