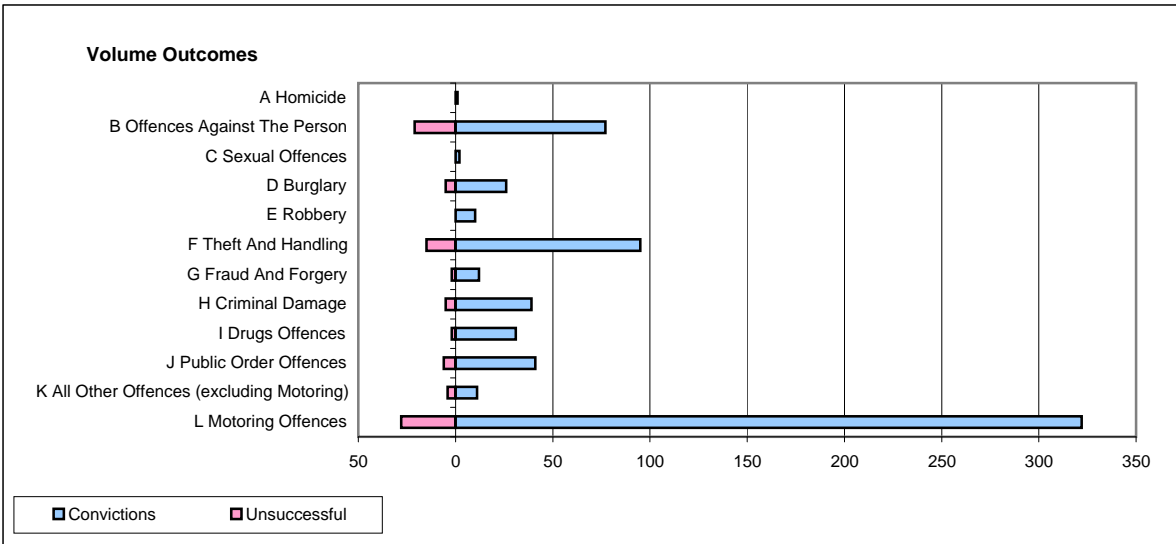
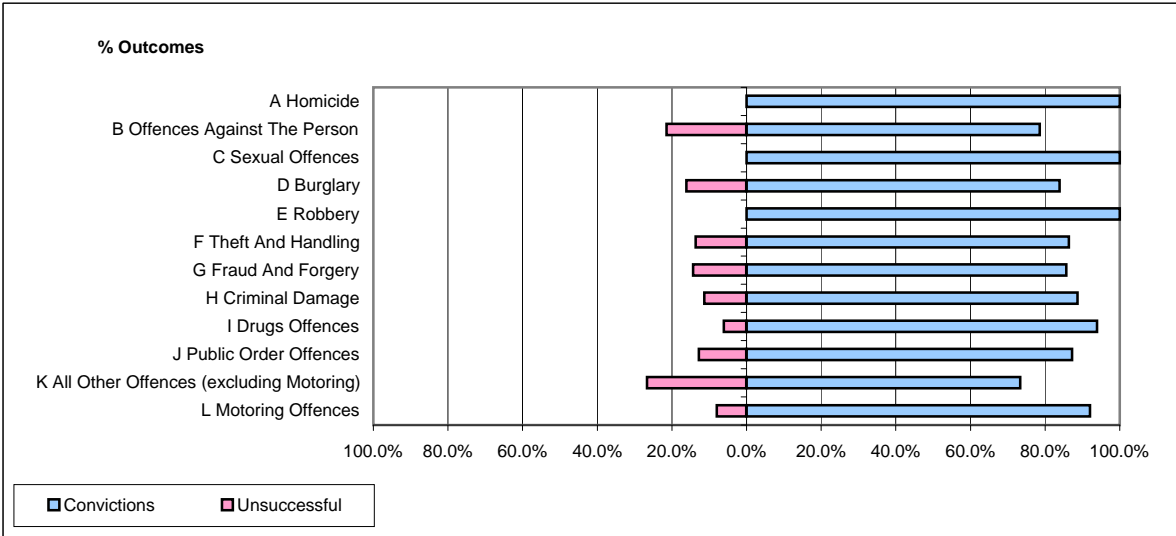


CPS OUTCOMES BY PRINCIPAL OFFENCE CATEGORY

May 2009

P02-Bedfordshire



	Convictions		Unsuccessful	
	Number of Defendants	%	Number of Defendants	%
A Homicide	1	100.0%	0	0.0%
B Offences Against The Person	77	78.6%	21	21.4%
C Sexual Offences	2	100.0%	0	0.0%
D Burglary	26	83.9%	5	16.1%
E Robbery	10	100.0%	0	0.0%
F Theft And Handling	95	86.4%	15	13.6%
G Fraud And Forgery	12	85.7%	2	14.3%
H Criminal Damage	39	88.6%	5	11.4%
I Drugs Offences	31	93.9%	2	6.1%
J Public Order Offences	41	87.2%	6	12.8%
K All Other Offences (excluding Motoring)	11	73.3%	4	26.7%
L Motoring Offences	322	92.0%	28	8.0%
Admin Finalisations	0	0.0%	12	100.0%
TOTAL	667	87.0%	100	13.0%