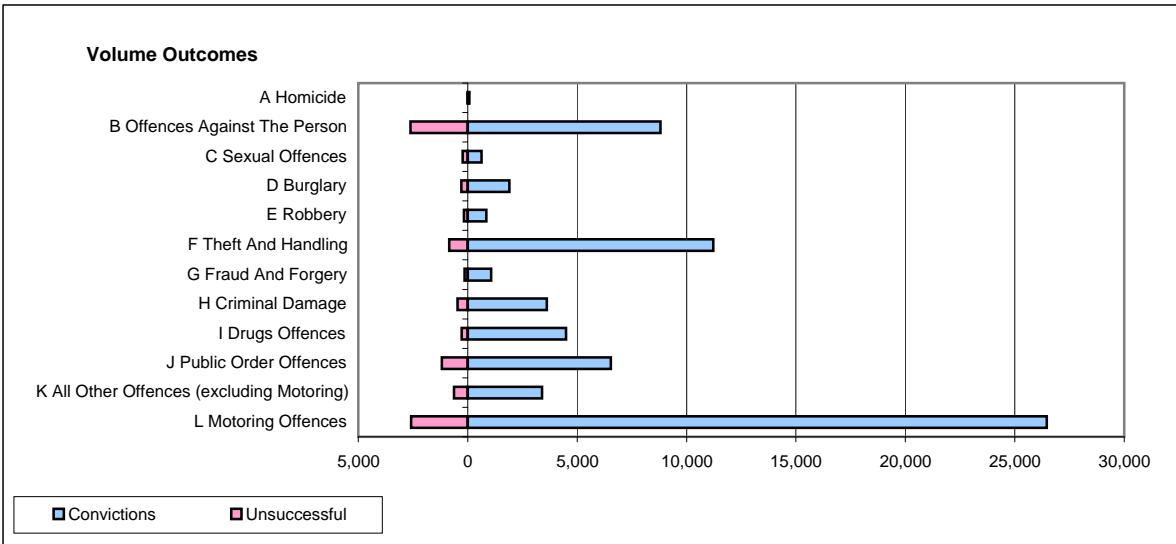
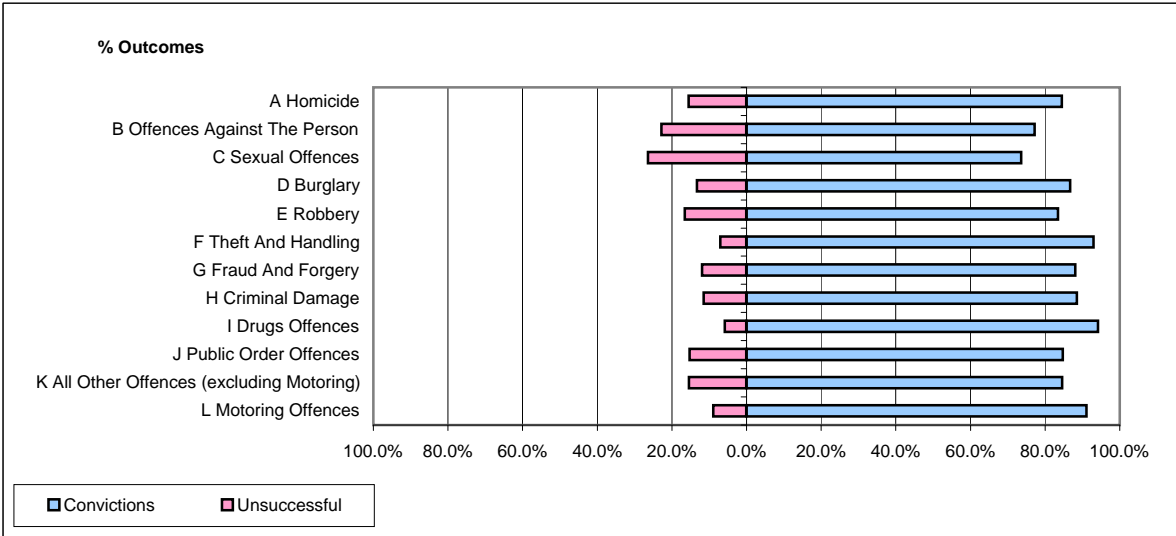


CPS OUTCOMES BY PRINCIPAL OFFENCE CATEGORY

April 2009

42 Areas



	Convictions		Unsuccessful	
	Number of Defendants	%	Number of Defendants	%
A Homicide	76	84.4%	14	15.6%
B Offences Against The Person	8,812	77.1%	2,610	22.9%
C Sexual Offences	626	73.6%	225	26.4%
D Burglary	1,901	86.7%	292	13.3%
E Robbery	844	83.5%	167	16.5%
F Theft And Handling	11,220	93.0%	846	7.0%
G Fraud And Forgery	1,064	88.1%	144	11.9%
H Criminal Damage	3,620	88.5%	471	11.5%
I Drugs Offences	4,493	94.2%	278	5.8%
J Public Order Offences	6,536	84.8%	1,176	15.2%
K All Other Offences (excluding Motoring)	3,398	84.5%	622	15.5%
L Motoring Offences	26,454	91.1%	2,585	8.9%
Admin Finalisations	0	0.0%	1,046	100.0%
TOTAL	69,044	86.8%	10,476	13.2%