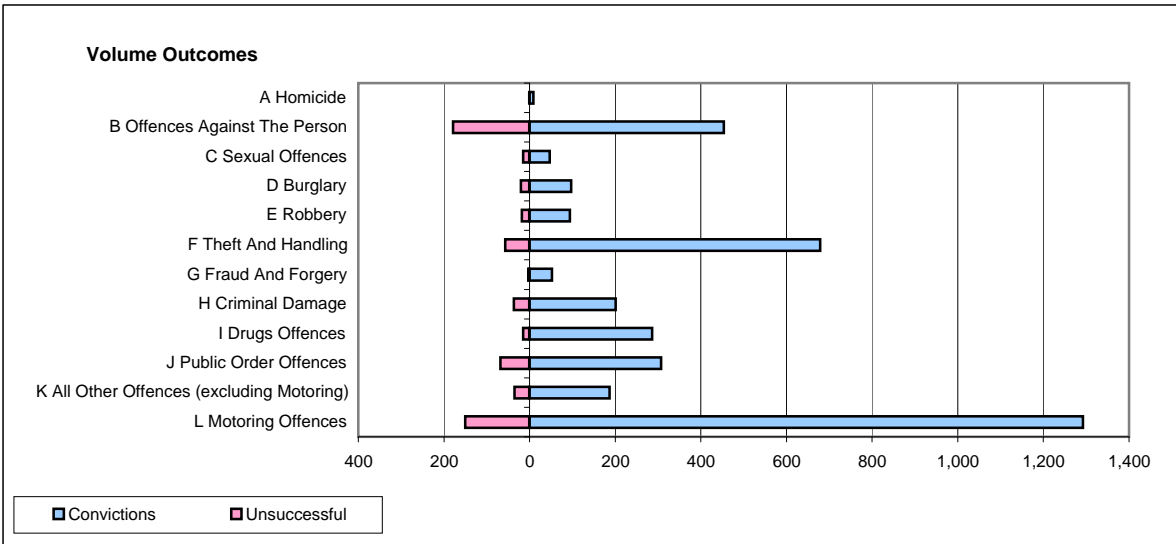
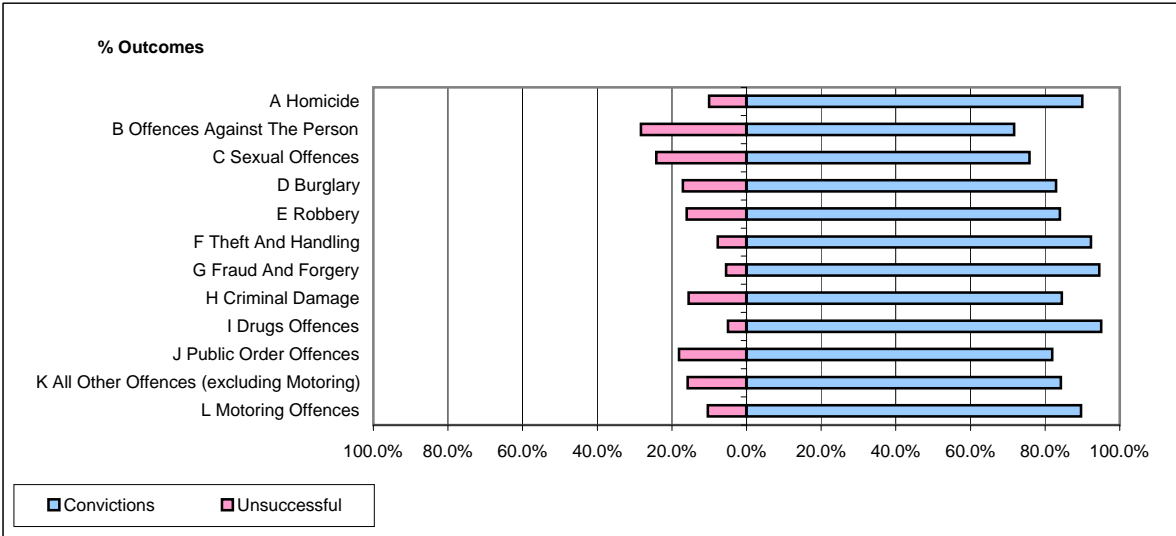


CPS OUTCOMES BY PRINCIPAL OFFENCE CATEGORY

April 2009

P41-WestMidlands



	Convictions		Unsuccessful	
	Number of Defendants	%	Number of Defendants	%
A Homicide	9	90.0%	1	10.0%
B Offences Against The Person	454	71.7%	179	28.3%
C Sexual Offences	47	75.8%	15	24.2%
D Burglary	97	82.9%	20	17.1%
E Robbery	94	83.9%	18	16.1%
F Theft And Handling	679	92.3%	57	7.7%
G Fraud And Forgery	52	94.5%	3	5.5%
H Criminal Damage	201	84.5%	37	15.5%
I Drugs Offences	286	95.0%	15	5.0%
J Public Order Offences	307	81.9%	68	18.1%
K All Other Offences (excluding Motoring)	187	84.2%	35	15.8%
L Motoring Offences	1,292	89.6%	150	10.4%
Admin Finalisations	0	0.0%	65	100.0%
TOTAL	3,705	84.8%	663	15.2%