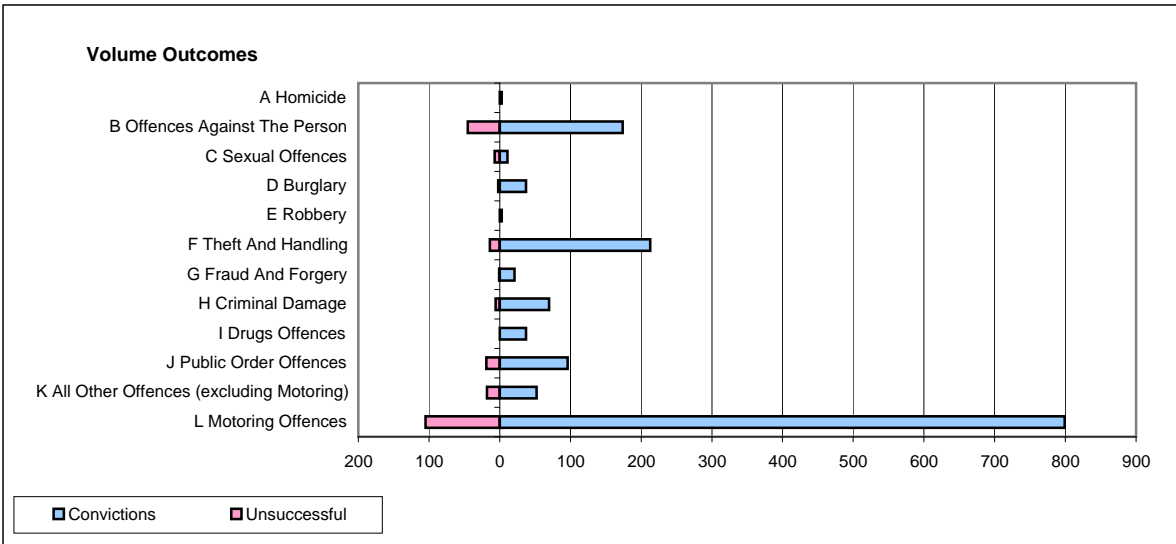
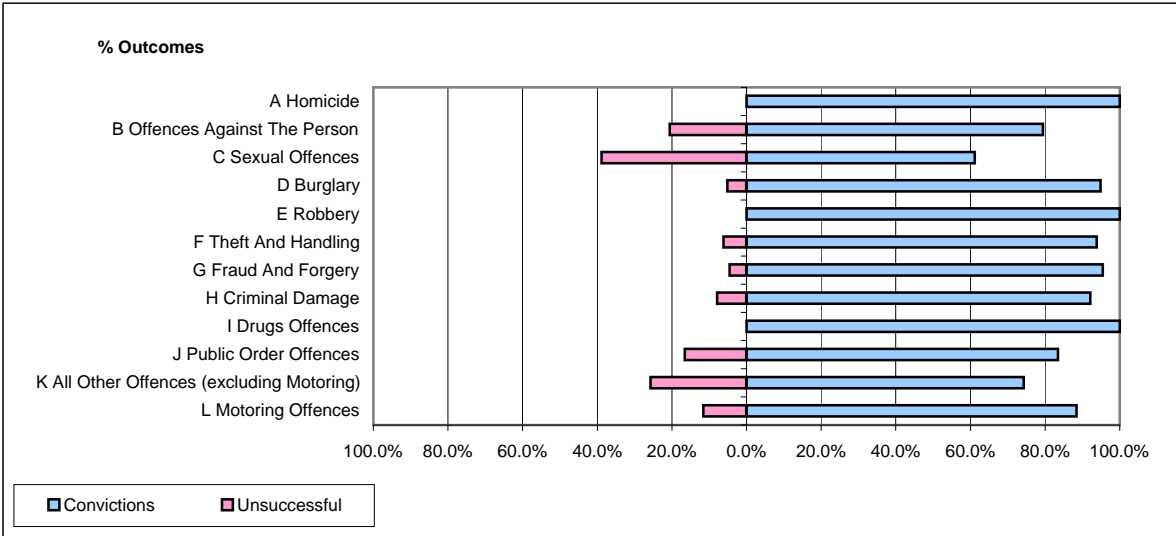


**CPS OUTCOMES BY PRINCIPAL OFFENCE CATEGORY**

**April 2009**

**P40-WestMercia**



	Convictions		Unsuccessful	
	Number of Defendants	%	Number of Defendants	%
<b>A Homicide</b>	<b>3</b>	<b>100.0%</b>	<b>0</b>	<b>0.0%</b>
<b>B Offences Against The Person</b>	<b>174</b>	<b>79.5%</b>	<b>45</b>	<b>20.5%</b>
<b>C Sexual Offences</b>	<b>11</b>	<b>61.1%</b>	<b>7</b>	<b>38.9%</b>
<b>D Burglary</b>	<b>37</b>	<b>94.9%</b>	<b>2</b>	<b>5.1%</b>
<b>E Robbery</b>	<b>3</b>	<b>100.0%</b>	<b>0</b>	<b>0.0%</b>
<b>F Theft And Handling</b>	<b>213</b>	<b>93.8%</b>	<b>14</b>	<b>6.2%</b>
<b>G Fraud And Forgery</b>	<b>21</b>	<b>95.5%</b>	<b>1</b>	<b>4.5%</b>
<b>H Criminal Damage</b>	<b>70</b>	<b>92.1%</b>	<b>6</b>	<b>7.9%</b>
<b>I Drugs Offences</b>	<b>37</b>	<b>100.0%</b>	<b>0</b>	<b>0.0%</b>
<b>J Public Order Offences</b>	<b>96</b>	<b>83.5%</b>	<b>19</b>	<b>16.5%</b>
<b>K All Other Offences (excluding Motoring)</b>	<b>52</b>	<b>74.3%</b>	<b>18</b>	<b>25.7%</b>
<b>L Motoring Offences</b>	<b>799</b>	<b>88.4%</b>	<b>105</b>	<b>11.6%</b>
<b>Admin Finalisations</b>	<b>0</b>	<b>0.0%</b>	<b>23</b>	<b>100.0%</b>
<b>TOTAL</b>	<b>1,516</b>	<b>86.3%</b>	<b>240</b>	<b>13.7%</b>