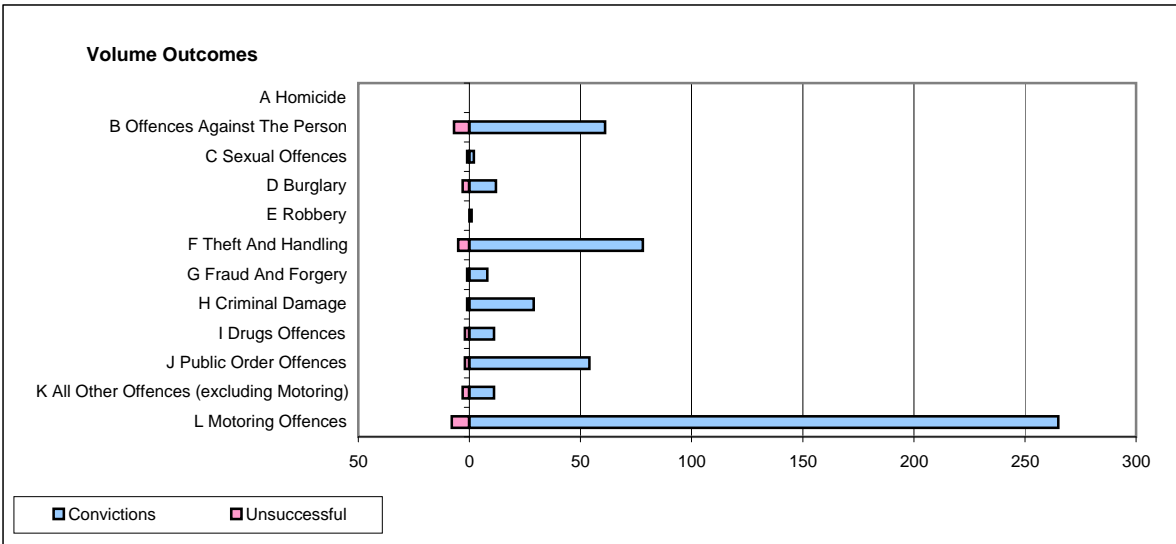
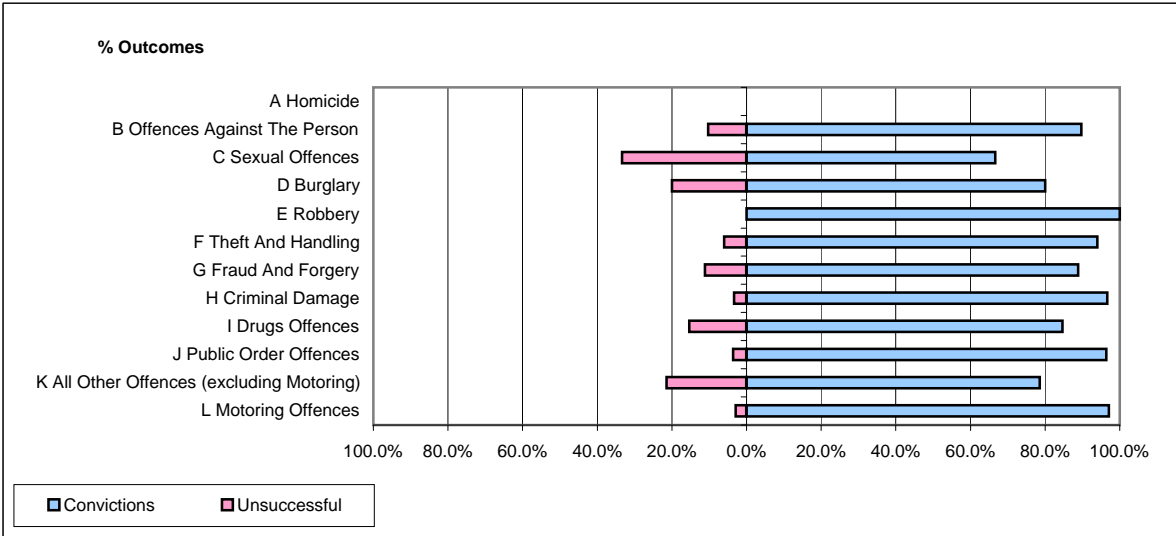


**CPS OUTCOMES BY PRINCIPAL OFFENCE CATEGORY**

**April 2009**

**P39-Warwickshire**



	Convictions		Unsuccessful	
	Number of Defendants	%	Number of Defendants	%
<b>A Homicide</b>	<b>0</b>	<b>0</b>	<b>0</b>	<b>0</b>
<b>B Offences Against The Person</b>	<b>61</b>	<b>89.7%</b>	<b>7</b>	<b>10.3%</b>
<b>C Sexual Offences</b>	<b>2</b>	<b>66.7%</b>	<b>1</b>	<b>33.3%</b>
<b>D Burglary</b>	<b>12</b>	<b>80.0%</b>	<b>3</b>	<b>20.0%</b>
<b>E Robbery</b>	<b>1</b>	<b>100.0%</b>	<b>0</b>	<b>0.0%</b>
<b>F Theft And Handling</b>	<b>78</b>	<b>94.0%</b>	<b>5</b>	<b>6.0%</b>
<b>G Fraud And Forgery</b>	<b>8</b>	<b>88.9%</b>	<b>1</b>	<b>11.1%</b>
<b>H Criminal Damage</b>	<b>29</b>	<b>96.7%</b>	<b>1</b>	<b>3.3%</b>
<b>I Drugs Offences</b>	<b>11</b>	<b>84.6%</b>	<b>2</b>	<b>15.4%</b>
<b>J Public Order Offences</b>	<b>54</b>	<b>96.4%</b>	<b>2</b>	<b>3.6%</b>
<b>K All Other Offences (excluding Motoring)</b>	<b>11</b>	<b>78.6%</b>	<b>3</b>	<b>21.4%</b>
<b>L Motoring Offences</b>	<b>265</b>	<b>97.1%</b>	<b>8</b>	<b>2.9%</b>
<b>Admin Finalisations</b>	<b>0</b>	<b>0.0%</b>	<b>3</b>	<b>100.0%</b>
<b>TOTAL</b>	<b>532</b>	<b>93.7%</b>	<b>36</b>	<b>6.3%</b>