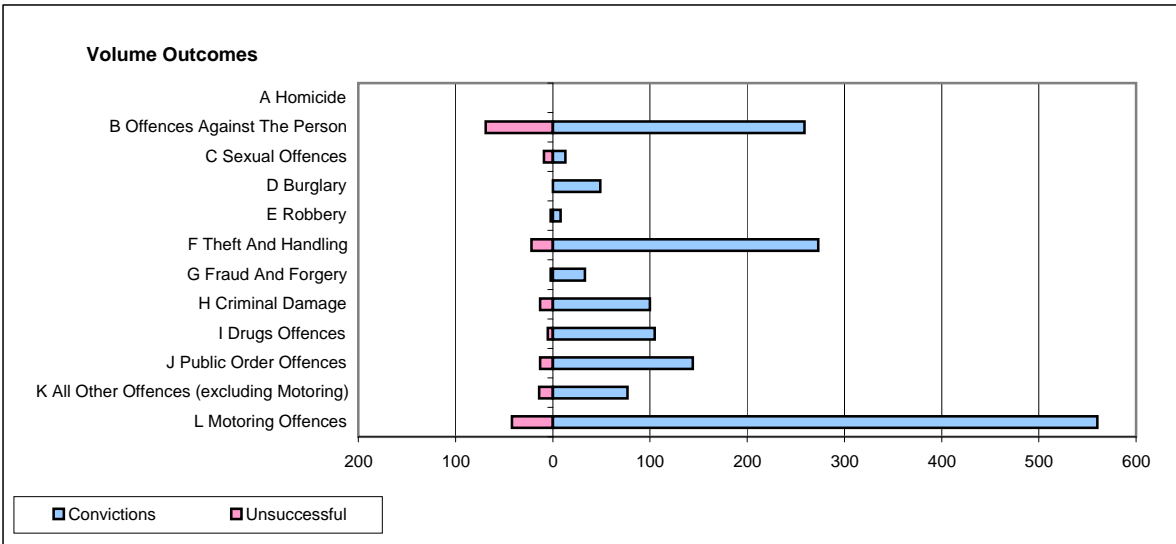
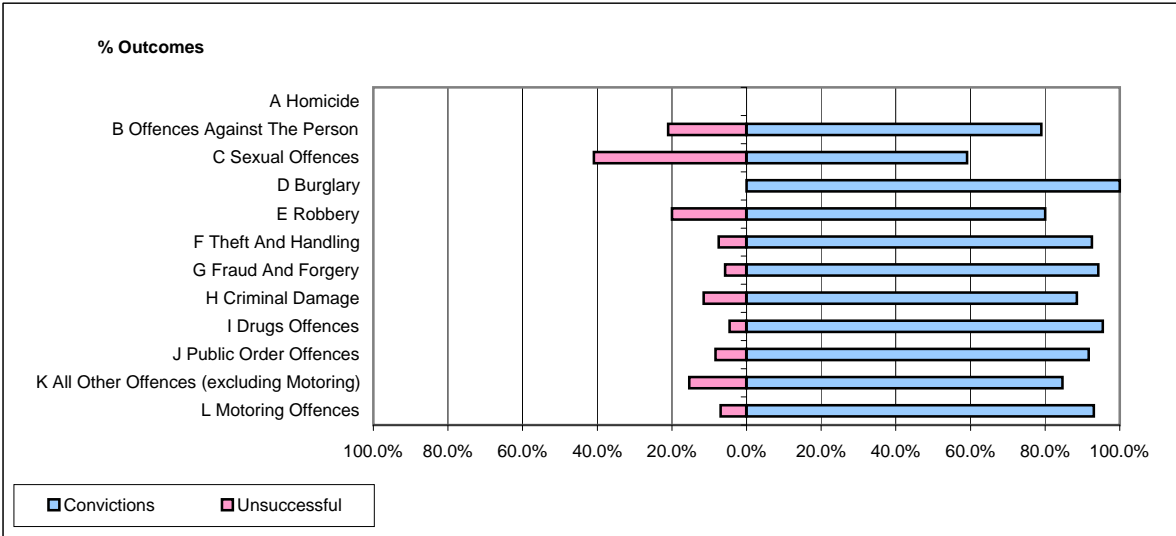


CPS OUTCOMES BY PRINCIPAL OFFENCE CATEGORY

April 2009

P37-Sussex



	Convictions		Unsuccessful	
	Number of Defendants	%	Number of Defendants	%
A Homicide	0	0	0	0
B Offences Against The Person	259	79.0%	69	21.0%
C Sexual Offences	13	59.1%	9	40.9%
D Burglary	49	100.0%	0	0.0%
E Robbery	8	80.0%	2	20.0%
F Theft And Handling	273	92.5%	22	7.5%
G Fraud And Forgery	33	94.3%	2	5.7%
H Criminal Damage	100	88.5%	13	11.5%
I Drugs Offences	105	95.5%	5	4.5%
J Public Order Offences	144	91.7%	13	8.3%
K All Other Offences (excluding Motoring)	77	84.6%	14	15.4%
L Motoring Offences	560	93.0%	42	7.0%
Admin Finalisations	0	0.0%	8	100.0%
TOTAL	1,621	89.1%	199	10.9%