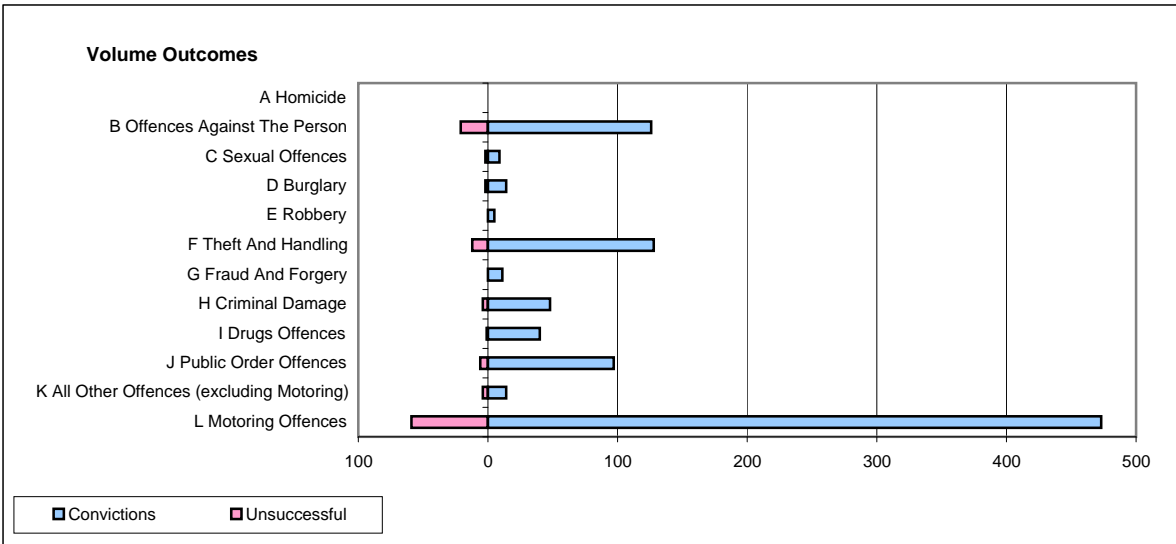
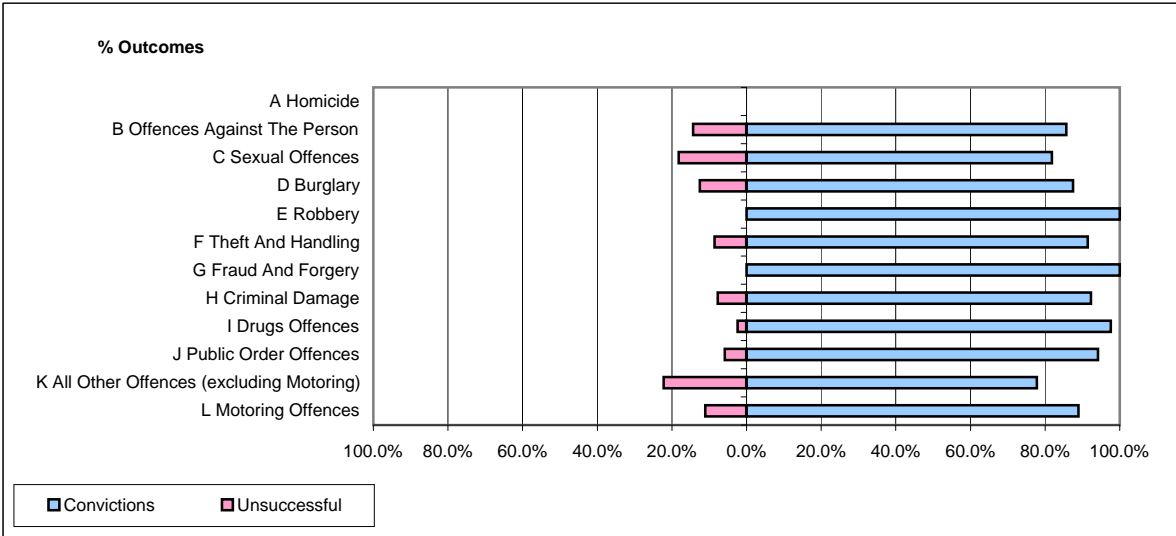


CPS OUTCOMES BY PRINCIPAL OFFENCE CATEGORY

April 2009

P35-Suffolk



	Convictions		Unsuccessful	
	Number of Defendants	%	Number of Defendants	%
A Homicide	0	0	0	0
B Offences Against The Person	126	85.7%	21	14.3%
C Sexual Offences	9	81.8%	2	18.2%
D Burglary	14	87.5%	2	12.5%
E Robbery	5	100.0%	0	0.0%
F Theft And Handling	128	91.4%	12	8.6%
G Fraud And Forgery	11	100.0%	0	0.0%
H Criminal Damage	48	92.3%	4	7.7%
I Drugs Offences	40	97.6%	1	2.4%
J Public Order Offences	97	94.2%	6	5.8%
K All Other Offences (excluding Motoring)	14	77.8%	4	22.2%
L Motoring Offences	473	88.9%	59	11.1%
Admin Finalisations	0	0.0%	19	100.0%
TOTAL	965	88.1%	130	11.9%