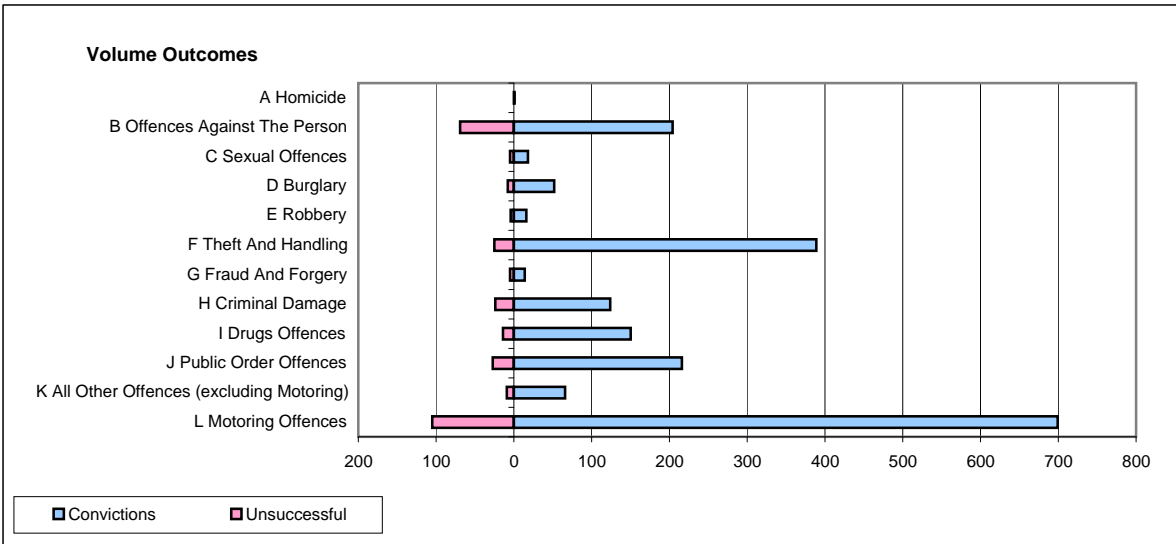
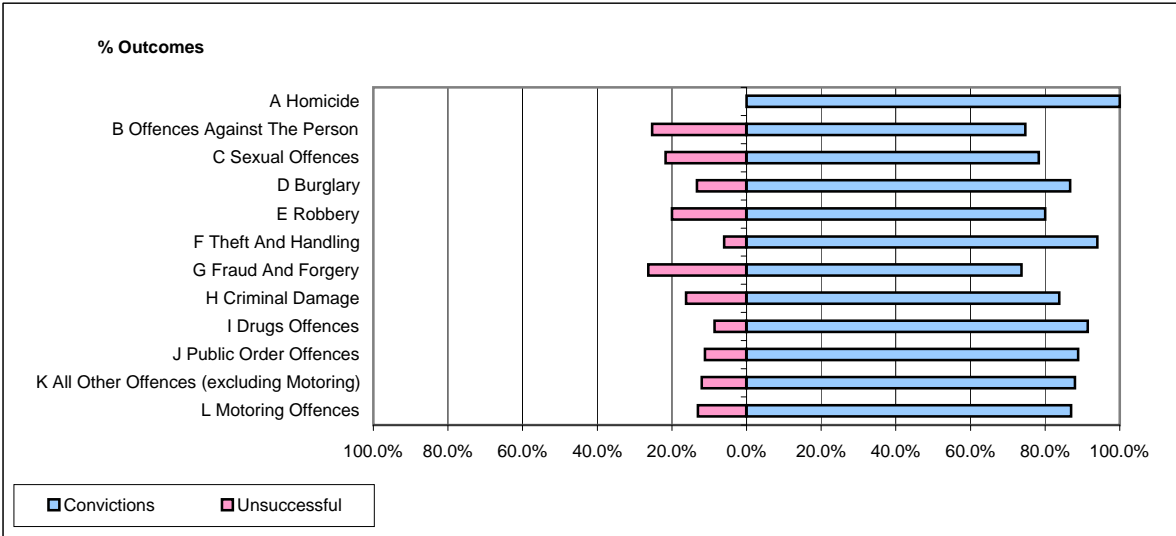


**CPS OUTCOMES BY PRINCIPAL OFFENCE CATEGORY**

**April 2009**

**P32-SouthWales**



	Convictions		Unsuccessful	
	Number of Defendants	%	Number of Defendants	%
<b>A Homicide</b>	<b>1</b>	<b>100.0%</b>	<b>0</b>	<b>0.0%</b>
<b>B Offences Against The Person</b>	<b>204</b>	<b>74.7%</b>	<b>69</b>	<b>25.3%</b>
<b>C Sexual Offences</b>	<b>18</b>	<b>78.3%</b>	<b>5</b>	<b>21.7%</b>
<b>D Burglary</b>	<b>52</b>	<b>86.7%</b>	<b>8</b>	<b>13.3%</b>
<b>E Robbery</b>	<b>16</b>	<b>80.0%</b>	<b>4</b>	<b>20.0%</b>
<b>F Theft And Handling</b>	<b>389</b>	<b>94.0%</b>	<b>25</b>	<b>6.0%</b>
<b>G Fraud And Forgery</b>	<b>14</b>	<b>73.7%</b>	<b>5</b>	<b>26.3%</b>
<b>H Criminal Damage</b>	<b>124</b>	<b>83.8%</b>	<b>24</b>	<b>16.2%</b>
<b>I Drugs Offences</b>	<b>150</b>	<b>91.5%</b>	<b>14</b>	<b>8.5%</b>
<b>J Public Order Offences</b>	<b>216</b>	<b>88.9%</b>	<b>27</b>	<b>11.1%</b>
<b>K All Other Offences (excluding Motoring)</b>	<b>66</b>	<b>88.0%</b>	<b>9</b>	<b>12.0%</b>
<b>L Motoring Offences</b>	<b>699</b>	<b>86.9%</b>	<b>105</b>	<b>13.1%</b>
<b>Admin Finalisations</b>	<b>0</b>	<b>0.0%</b>	<b>54</b>	<b>100.0%</b>
<b>TOTAL</b>	<b>1,949</b>	<b>84.8%</b>	<b>349</b>	<b>15.2%</b>