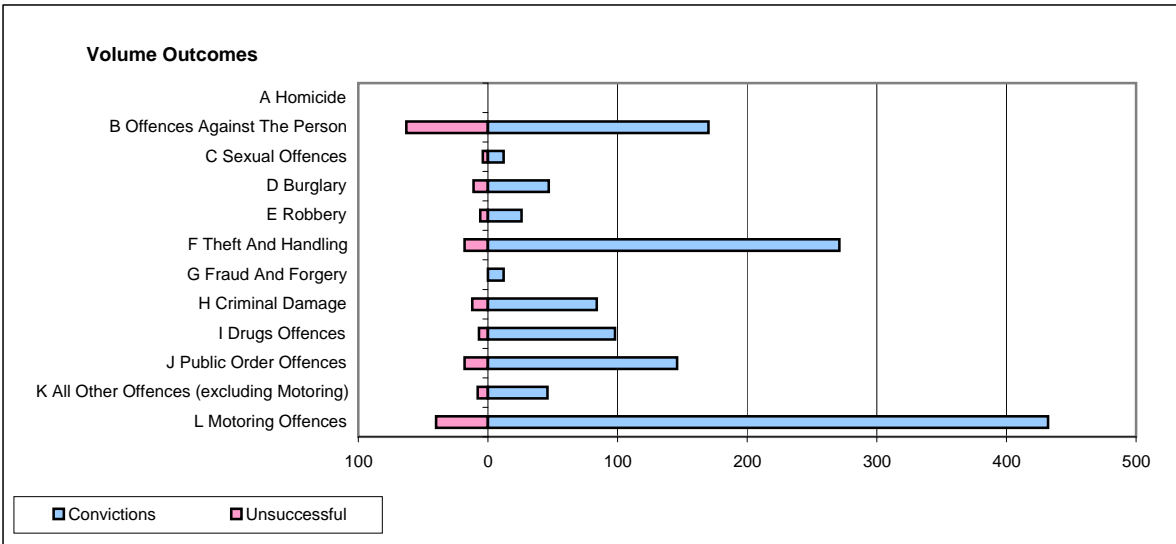
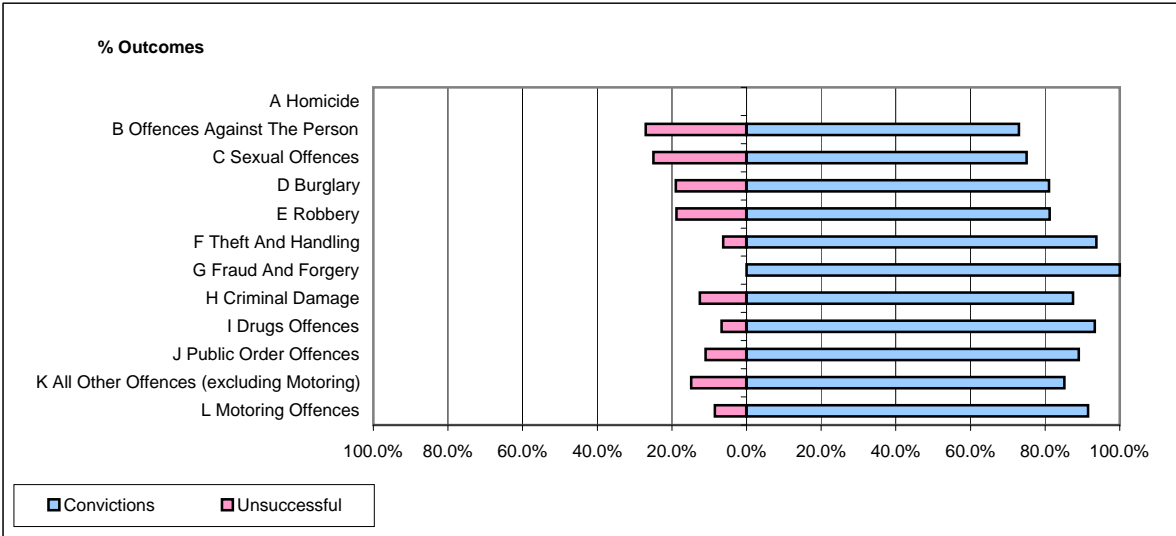


CPS OUTCOMES BY PRINCIPAL OFFENCE CATEGORY

April 2009

P31-Nottinghamshire



	Convictions		Unsuccessful	
	Number of Defendants	%	Number of Defendants	%
A Homicide	0	0	0	0
B Offences Against The Person	170	73.0%	63	27.0%
C Sexual Offences	12	75.0%	4	25.0%
D Burglary	47	81.0%	11	19.0%
E Robbery	26	81.3%	6	18.8%
F Theft And Handling	271	93.8%	18	6.2%
G Fraud And Forgery	12	100.0%	0	0.0%
H Criminal Damage	84	87.5%	12	12.5%
I Drugs Offences	98	93.3%	7	6.7%
J Public Order Offences	146	89.0%	18	11.0%
K All Other Offences (excluding Motoring)	46	85.2%	8	14.8%
L Motoring Offences	432	91.5%	40	8.5%
Admin Finalisations	0	0.0%	16	100.0%
TOTAL	1,344	86.9%	203	13.1%