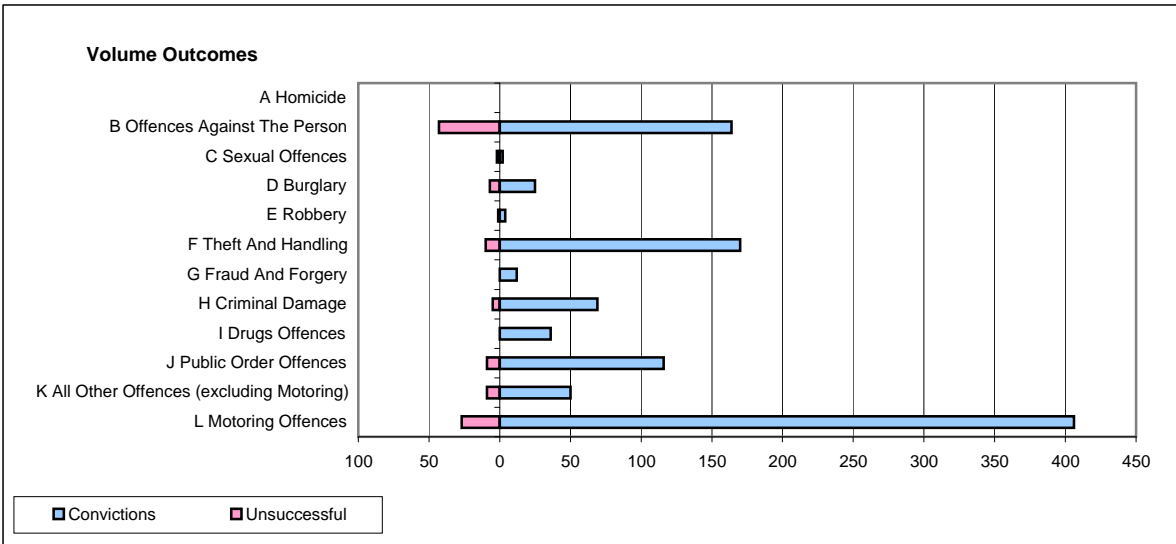
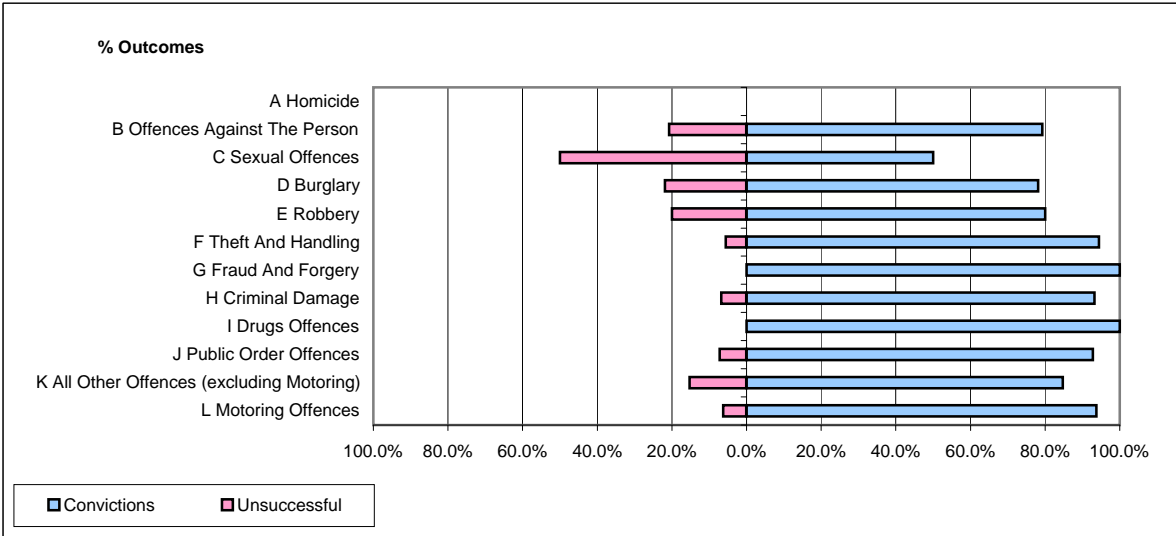


CPS OUTCOMES BY PRINCIPAL OFFENCE CATEGORY

April 2009

P29-NorthWales



	Convictions		Unsuccessful	
	Number of Defendants	%	Number of Defendants	%
A Homicide	0	0	0	0
B Offences Against The Person	164	79.2%	43	20.8%
C Sexual Offences	2	50.0%	2	50.0%
D Burglary	25	78.1%	7	21.9%
E Robbery	4	80.0%	1	20.0%
F Theft And Handling	170	94.4%	10	5.6%
G Fraud And Forgery	12	100.0%	0	0.0%
H Criminal Damage	69	93.2%	5	6.8%
I Drugs Offences	36	100.0%	0	0.0%
J Public Order Offences	116	92.8%	9	7.2%
K All Other Offences (excluding Motoring)	50	84.7%	9	15.3%
L Motoring Offences	406	93.8%	27	6.2%
Admin Finalisations	0	0.0%	7	100.0%
TOTAL	1,054	89.8%	120	10.2%