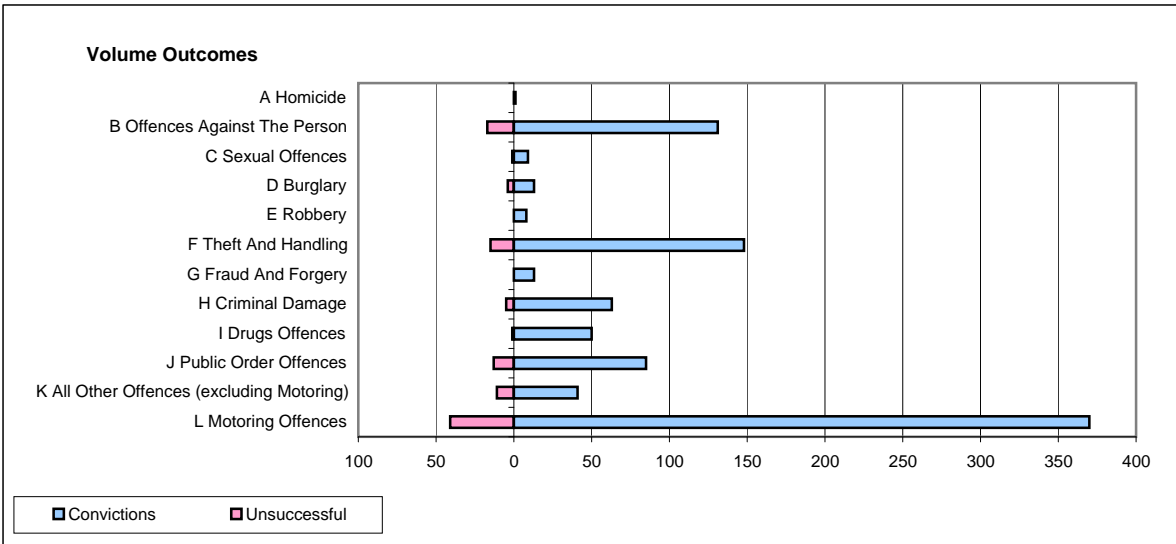
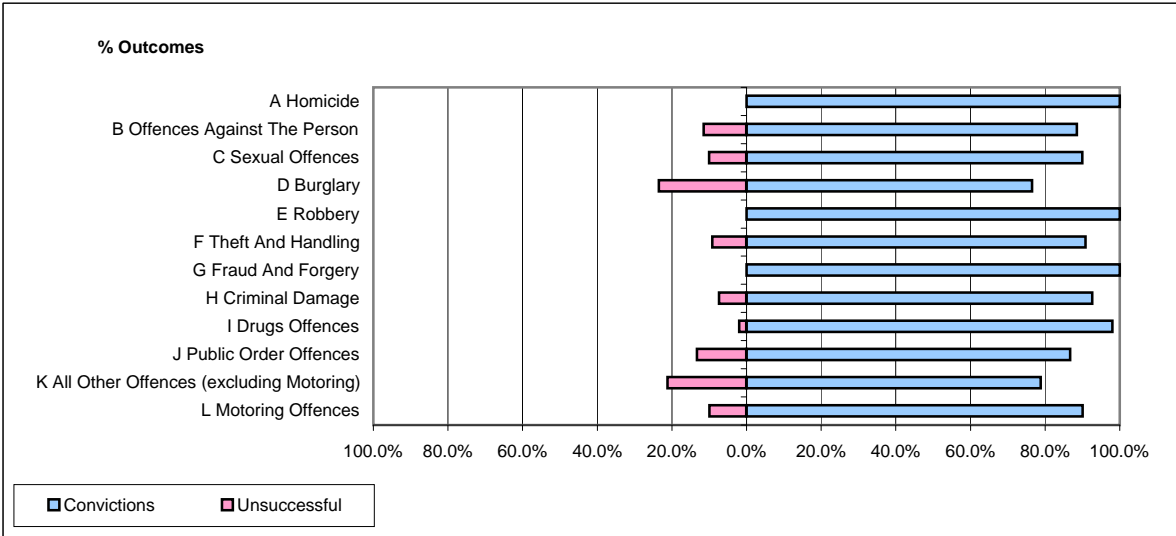


**CPS OUTCOMES BY PRINCIPAL OFFENCE CATEGORY**

**April 2009**

**P26-Norfolk**



	Convictions		Unsuccessful	
	Number of Defendants	%	Number of Defendants	%
<b>A Homicide</b>	<b>1</b>	<b>100.0%</b>	<b>0</b>	<b>0.0%</b>
<b>B Offences Against The Person</b>	<b>131</b>	<b>88.5%</b>	<b>17</b>	<b>11.5%</b>
<b>C Sexual Offences</b>	<b>9</b>	<b>90.0%</b>	<b>1</b>	<b>10.0%</b>
<b>D Burglary</b>	<b>13</b>	<b>76.5%</b>	<b>4</b>	<b>23.5%</b>
<b>E Robbery</b>	<b>8</b>	<b>100.0%</b>	<b>0</b>	<b>0.0%</b>
<b>F Theft And Handling</b>	<b>148</b>	<b>90.8%</b>	<b>15</b>	<b>9.2%</b>
<b>G Fraud And Forgery</b>	<b>13</b>	<b>100.0%</b>	<b>0</b>	<b>0.0%</b>
<b>H Criminal Damage</b>	<b>63</b>	<b>92.6%</b>	<b>5</b>	<b>7.4%</b>
<b>I Drugs Offences</b>	<b>50</b>	<b>98.0%</b>	<b>1</b>	<b>2.0%</b>
<b>J Public Order Offences</b>	<b>85</b>	<b>86.7%</b>	<b>13</b>	<b>13.3%</b>
<b>K All Other Offences (excluding Motoring)</b>	<b>41</b>	<b>78.8%</b>	<b>11</b>	<b>21.2%</b>
<b>L Motoring Offences</b>	<b>370</b>	<b>90.0%</b>	<b>41</b>	<b>10.0%</b>
<b>Admin Finalisations</b>	<b>0</b>	<b>0.0%</b>	<b>11</b>	<b>100.0%</b>
<b>TOTAL</b>	<b>932</b>	<b>88.7%</b>	<b>119</b>	<b>11.3%</b>